

CITY OF KIRKLAND
2024 STREET OVERLY PROJECT
JOB NO. 09-24-PW NO. STC0060024/STC0060324
ADDENDUM NO. 1

TO THE PLANS, SPECIFICATIONS, PROPOSAL AND CONTRACT

Issued This Date: Tuesday, June 13, 2024
Bid Opening: **Unchanged – June 18, 2024**
Place of Opening: City Hall, Peter Kirk Room, posted online

Notice to All Plan holders:

This Addendum No. 1, containing the following revisions, additions, deletions, and/or Clarifications, is hereby made part of the Plan and Contract Documents for the above named project. Bidders shall take this Addendum into consideration when preparing and submitting their bids and it shall be attached to the Contract Documents.

Contractors shall acknowledge receipt of this Addendum in the place provided on Proposal page 6. Failure to do so may disqualify the Bidder from consideration of its bid.

This addendum contains 10 pages, including this page.

All other requirements of the contract documents remain in effect.

CONTRACT DOCUMENTS

ITEM NO. 1: Adjustment of Bid Quantities and Units (Bid Items B6,B12,B13,E13,E14,E16 AND E17)

Estimated Quantities have been changed for the following Bid Schedule Items to match the Contract details...

- B6, "ROADWAY EXCAVATION INCL. HAUL" Estimated Quantity has been changed to 161 CY.
- B12, "PLANING BITUMINOUS PAVEMENT – FULL WIDTH - 2'" Estimated Quantity has been changed to 5,800 SY.
- B13, "PLANING BITUMINOUS PAVEMENT – FULL WIDTH - 3'" Estimated Quantity has been changed to 3,163 SY.
- E13, "HMA CL 1/2" PG 58H-22 (2" THICK)" Estimated Quantity has been changed to 522 TON.
- E14, "HMA CL 1/2" PG 58H-22 (3" THICK)" Estimated Quantity has been changed to 1,140 TON.
- E16, "PLANING BITUMINOUS PAVEMENT – FULL WIDTH - 3'" Estimated Quantity has been changed to 6,755 SY.
- E17, "PLANING BITUMINOUS PAVEMENT – FULL WIDTH - 2'" Estimated Quantity has been changed to 4,645 SY.

Units have been changed for the following Bid Schedule Items...

- F17, "WATTLE" Unit has been changed to "SY".

Pages 8,9,13 and 15 of the Bid Proposal that includes the above modification have been revised and included with this Addendum for the bidder's convenience.

ITEM NO. 2: Adjustment of Paving Plan Sheet Details (Schedule B)

Details under "Paving Notes" have been changed for the Schedule B - NE 139th & 140th Street Plan Sheets.

- Plan Sheets 6,7,8: The following note has been added "ROADWAY EXCAVATION INCL HAUL (APPROX. 1")"
- Plan Sheet 9: The following note has been removed "ROADWAY EXCAVATION INCL HAUL (APPROX. 1")"

Pages 6,7,8 and 9 of the Plans, that includes the above modifications, have been revised and included with this Addendum for the bidder's convenience.

Sincerely,

William Denton

Will Denton, PE
Senior Project Engineer

Rod Steitzer

Rod Steitzer, PE
Capital Projects Manager

**CITY OF KIRKLAND
 BID SCHEDULE**

2024 STREET OVERLAY PROJECT
 JOB NO.09-24-PW

Note: Unit prices for all items, all extensions, and the total amount of the bid must be shown. All entries must be typed or entered in ink

SCHEDULE A - PROJECT WIDE BID ITEMS – PART OF BASE BID						
ITEM NO.	DESCRIPTION	SPEC REF	UNIT	EST QTY	UNIT PRICE	EXTENSION
A1	FLAGGERS AND SPOTTERS	1-10	HR	4200		
A2	OTHER TRAFFIC CONTROL LABOR - OFF DUTY POLICE	1-10	HR	120		
A3	SPCC PLAN	1-07	LS	1		
A4	UTILITY POTHOLING	1-07	FA	1	\$2,500.00	\$2,500.00
A5	EROSION/WATER POLLUTION CONTROL	8-01	FA	1	\$2,500.00	\$2,500.00
A6	MINOR CHANGE	1-04	FA	1	\$15,000.00	\$15,000.00
A7	ASPHALT COST PRICE ADJUSTMENT	5-04	CALC	1	\$20,000.00	\$20,000.00
Total Schedule A: _____						

SCHEDULE B – NE 139th & 140th Street– PART OF BASE BID						
ITEM NO.	DESCRIPTION	SPEC REF	UNIT	EST QTY	UNIT PRICE	EXTENSION
B1	MOBILIZATION, CLEANUP & DEMOBILIZATION	1-09	LS	1		
B2	PROJECT TEMPORARY TRAFFIC CONTROL	1-10	LS	1		
B3	REMOVE ASPHALT CONC. FOR CONCRETE WORK	2-02	SY	108		
B4	REMOVE CEMENT CONC. CURB & GUTTER	2-02	LF	460		
B5	GRADING AND COMPACTING	2-02	SY	8,960		
B6	ROADWAY EXCAVATION INCL. HAUL	2-03	CY	161		
B7	REMOVE CEMENT CONCRETE SIDEWALK	2-03	SY	164		
B8	CRUSHED SURFACING TOP COURSE FOR CONCRETE WORK	4-04	TON	59		
B9	HMA CL 1/2" PG 58H-22 FOR CURB PATCH	5-04	TON	20		
B10	HMA DRAINAGE BERM	5-04	LF	25		
B11	HMA CL 1/2" PG 58H-22 (3" THICK)	5-04	TON	1,480		
B12	PLANING BITUMINOUS PAVEMENT - FULL WIDTH - 2"	5-04	SY	5,800		

MUST BE SUBMITTED WITH PROPOSAL

B13	PLANING BITUMINOUS PAVEMENT - FULL WIDTH - 3"	5-04	SY	3,163		
B14	ADJUST MANHOLE - LOWERING	7-05	EA	12		
B15	ADJUST MANHOLE - RAISING	7-05	EA	12		
B16	ADJUST CATCH BASIN - LOWERING	7-05	EA	15		
B17	ADJUST CATCH BASIN - RAISING	7-05	EA	15		
B18	ADJUST WATER VALVE BOX - LOWERING	7-12	EA	9		
B19	ADJUST WATER VALVE BOX - RAISING	7-12	EA	9		
B20	EDGE RESTORATION	8-02	LF	65		
B21	LANDSCAPE RESTORATION	8-02	SF	533		
B22	CEMENT CONCRETE PEDESTRIAN CURB	8-04	LF	60		
B23	CEMENT CONCRETE TRAFFIC CURB AND GUTTER	8-04	LF	130		
B24	CEMENT CONCRETE ROLLED CURB	8-04	LF	340		
B25	RAISED PAVEMENT MARKER, TYPE 2B	8-09	HUN	0.04		
B26	RAISED PAVEMENT MARKER, TYPE 2	8-09	HUN	0.30		
B27	ADJUST MONUMENT CASE AND COVER - LOWERING	8-13	EA	8		
B28	ADJUST MONUMENT CASE AND COVER - RAISING	8-13	EA	8		
B29	CEMENT CONCRETE CURB RAMP	8-14	EA	7		
B30	CEMENT CONCRETE SIDEWALK	8-14	SY	92		
B31	CURB PAINTING - RED	8-22	LF	87		
B32	PLASTIC STOP LINE	8-22	SF	90		
B33	PAINT LINE	8-22	LF	720		
B34	TEMPORARY PAVEMENT MARKINGS	8-23	LF	600		
B35	ADJUST GAS VALVE BOX - LOWERING	8-90	EA	1		
B36	ADJUST GAS VALVE BOX - RAISING	8-90	EA	1		
Total Schedule B: _____						

SCHEDULE C – NE 132nd Street– PART OF BASE BID						
ITEM NO.	DESCRIPTION	SPEC REF	UNIT	EST QTY	UNIT PRICE	EXTENSION
C1	MOBILIZATION, CLEANUP & DEMOBILIZATION	1-09	LS	1		

MUST BE SUBMITTED WITH PROPOSAL

ALTERNATE BID SCHEDULE E

Note: Unit prices for all items, all extensions, and the total amount of the bid must be shown. All entries must be typed or entered in ink.

SCHEDULE E – 18th Ave– ALTERNATE BID SCHEDULE						
ITEM NO.	DESCRIPTION	SPEC REF	UNIT	EST QTY	UNIT PRICE	EXTENSION
E1	MOBILIZATION, CLEANUP & DEMOBILIZATION	1-09	LS	1		
E2	PROJECT TEMPORARY TRAFFIC CONTROL	1-10	LS	1		
E3	REMOVE ASPHALT CONC. FOR CONCRETE WORK	2-02	SY	123		
E4	REMOVE CEMENT CONC. CURB & GUTTER	2-02	LF	340		
E5	ROADWAY EXCAVATION INCL. HAUL	2-03	CY	4		
E6	REMOVE CEMENT CONCRETE SIDEWALK	2-03	SY	193		
E7	CRUSHED SURFACING TOP COURSE FOR CONCRETE WORK	4-04	TON	78		
E8	CRUSHED SURFACING TOP COURSE	4-05	TON	5		
E9	HMA CL 1/2" PG 58H-22 FOR CURB PATCH	5-04	TON	23		
E10	HMA WALKWAY	5-04	SF	40		
E11	HMA DRAINAGE BERM	5-04	LF	195		
E12	HMA FOR PAVEMENT REPAIR CL. 1/2" PG 58H-22	5-04	TON	510		
E13	HMA CL 1/2" PG 58H-22 (2" THICK)	5-04	TON	522		
E14	HMA CL 1/2" PG 58H-22 (3" THICK)	5-04	TON	1,140		
E15	PAVEMENT REPAIR EXCAVATION INCL. HAUL	5-04	SY	2,037		
E16	PLANING BITUMINOUS PAVEMENT - FULL WIDTH - 3"	5-04	SY	6,755		
E17	PLANING BITUMINOUS PAVEMENT - FULL WIDTH - 2"	5-04	SY	4,645		
E18	UNSCHEDULED PAVEMENT REPAIR	5-04	FA	1.0	\$5,000.00	\$5,000.00
E19	ADJUST CATCH BASIN - LOWERING	7-05	EA	13		
E20	ADJUST CATCH BASIN - RAISING	7-05	EA	13		
E21	ADJUST MANHOLE - LOWERING	7-05	EA	15		
E22	ADJUST MANHOLE - RAISING	7-05	EA	15		
E23	ADJUST WATER VALVE BOX - LOWERING	7-12	EA	25		
E24	ADJUST WATER VALVE BOX - RAISING	7-12	EA	25		
E25	LANDSCAPE RESTORATION	8-02	SF	720		
E26	EDGE RESTORATION	8-02	LF	1,120		

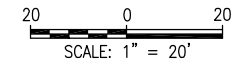
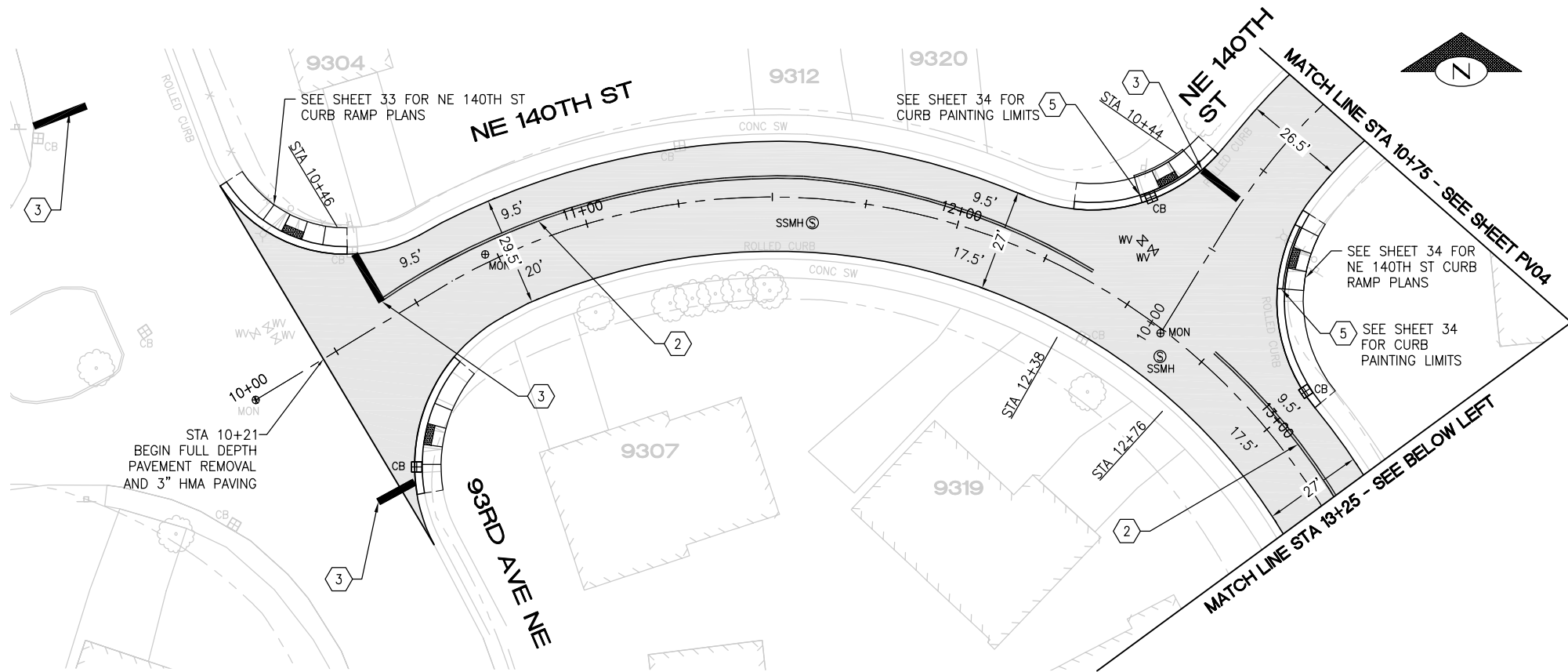
MUST BE SUBMITTED WITH PROPOSAL

ALTERNATE BID SCHEDULE F

Note: Unit prices for all items, all extensions, and the total amount of the bid must be shown. All entries must be typed or entered in ink.

SCHEDULE E – 126th Ave NE– ALTERNATE BID SCHEDULE						
ITEM NO.	DESCRIPTION	SPEC REF	UNIT	EST QTY	UNIT PRICE	EXTENSION
F1	MOBILIZATION, CLEANUP & DEMOBILIZATION	1-09	LS	1		
F2	PROJECT TEMPORARY TRAFFIC CONTROL	1-10	LS	1		
F3	REMOVE ASPHALT CONC. FOR CONCRETE WORK	2-02	SY	14		
F4	REMOVE CEMENT CONC. CURB & GUTTER	2-02	LF	51		
F5	REMOVE CEMENT CONCRETE SIDEWALK	2-03	SY	29		
F6	CRUSHED SURFACING TOP COURSE FOR CONCRETE WORK	4-04	TON	14		
F7	HMA CL 1/2" PG 58H-22 FOR CURB PATCH	5-04	TON	3		
F8	HMA CL 1/2" PG 58H-22 (3" THICK)	5-04	TON	1,340		
F9	PLANING BITUMINOUS PAVEMENT - FULL WIDTH - 3"	5-04	SY	8,111		
F10	UNSCHEDULED PAVEMENT REPAIR	5-04	FA	1	\$5,000.00	\$5,000.00
F11	ADJUST CATCH BASIN - LOWERING	7-05	EA	4		
F12	ADJUST CATCH BASIN - RAISING	7-05	EA	4		
F13	ADJUST MANHOLE - LOWERING	7-05	EA	15		
F14	ADJUST MANHOLE - RAISING	7-05	EA	15		
F15	ADJUST WATER VALVE BOX - LOWERING	7-12	EA	25		
F16	ADJUST WATER VALVE BOX - RAISING	7-12	EA	25		
F17	WATTLE	8-01	SY	105		
F18	LANDSCAPE RESTORATION	8-02	SF	108		
F19	EDGE RESTORATION	8-02	LF	1,700		
F20	CEMENT CONCRETE TRAFFIC CURB AND GUTTER	8-04	LF	62		
F21	CEMENT CONCRETE DRIVEWAY ENTRANCE	8-06	SY	11		
F22	RAISED PAVEMENT MARKER, TYPE 2B	8-09	HUN	0.06		
F23	ADJUST MONUMENT CASE AND COVER - LOWERING	8-13	EA	3		
F24	ADJUST MONUMENT CASE AND COVER - RAISING	8-13	EA	3		
F25	CEMENT CONCRETE CURB RAMP	8-14	EA	3		

May 13, 2024 - 11:31 AM - FLAVIO - Z:\2023 PROJECTS\230113 2024 KIRKLAND OVERLAYS\PLANS\230113_P-OVL-Y-NE 139TH ST.DWG - Layout Name: PV01



CONSTRUCTION NOTES

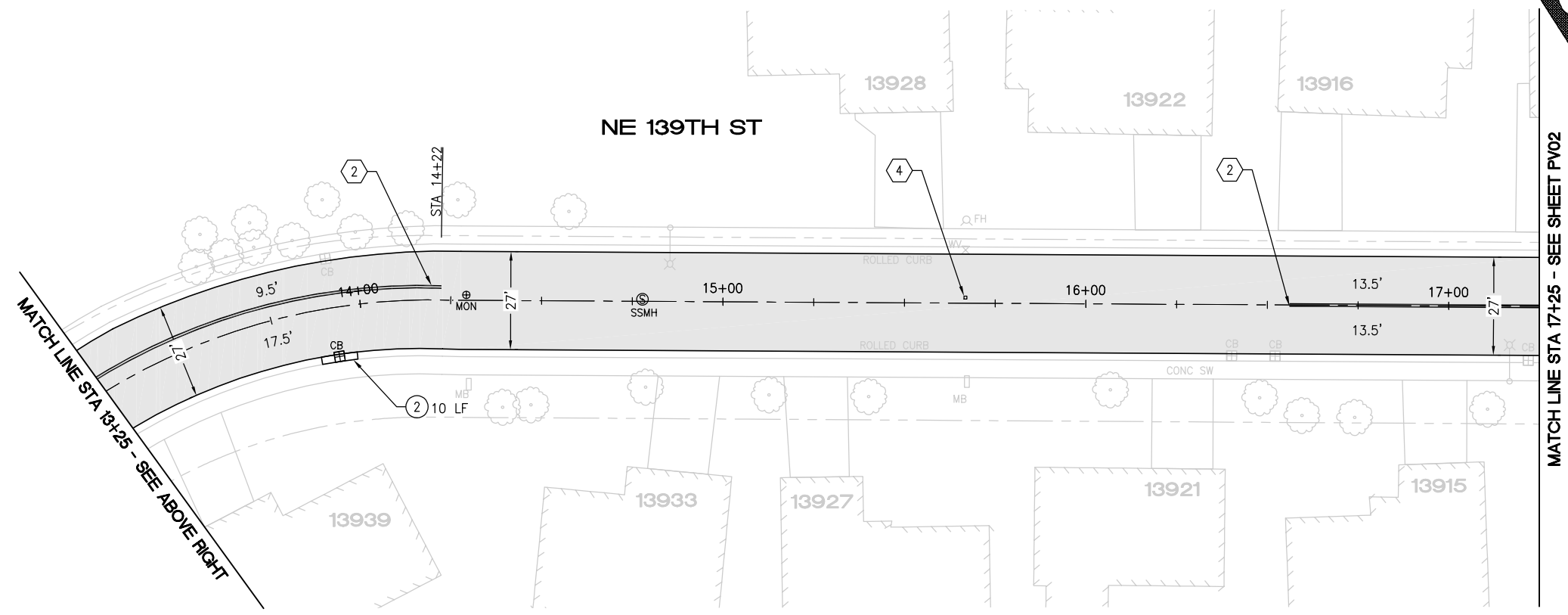
- ① PAVEMENT REPAIR PER DTL 1, SHEET 5
- ② SAWCUT AND REMOVE 2' ASPH CONC PAVEMENT FROM FACE OF GUTTER. REMOVE AND REPLACE ROLLED CURB PER COK STD PLAN CK-R.17D. RESTORE ASPH CONC PAVEMENT TO MATCH EX DEPTH
- ③ SAWCUT AND REMOVE 2' ASPH CONC PAVEMENT FROM FACE OF GUTTER. REMOVE AND REPLACE CONC CURB AND GUTTER PER COK STD PLAN CK-R.17. RESTORE ASPH CONC PAVEMENT TO MATCH EX DEPTH
- ④ REMOVE AND REPLACE CONC SIDEWALK
- ⑤ INSTALL HMA BERM PER DTL 4, SHEET 5
- ⑥ MAINTAIN EXISTING SPILLWAY. REMOVE AND RESET MAILBOX STRUCTURE IF NEEDED DURING PAVING

PAVING NOTES

- REMOVE EX HMA FULL WIDTH, FULL DEPTH (APPROX 2")
- ROADWAY EXCAVATION INCL HAUL (APPROX. 1")
- COMPACT EX SUBGRADE TO 95%
- REPLACE WITH 3" HMA CLASS 1/2"

CHANNELIZATION NOTES

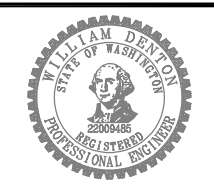
- ① 6" PAINTED WHITE EDGE LINE PER COK PLAN CK-R.35
- ② PAINTED DOUBLE YELLOW CENTER LINE PER COK STD PLAN CK-R.31
- ③ WHITE THERMOPLASTIC STOP BAR PER COK STD PLAN CK-R.28
- ④ BLUE TYPE 2B RPM AT FIRE HYDRANT PER STD PLAN CK-R.29
- ⑤ PAINTED RED CURB



DATE	NO.	REVISION	BY
6/12/24	1	PAVING NOTES	WD
5/10/24	0		



UPI NO.:	FED. AID PROJ. NO.:
SURVEY NO.:	FIELD BOOK(S):
HORZ. DATUM:	VERT. DATUM:
DESIGNED BY: WD	DRAWN BY: FGC



APPROVED BY: _____

DATE: _____



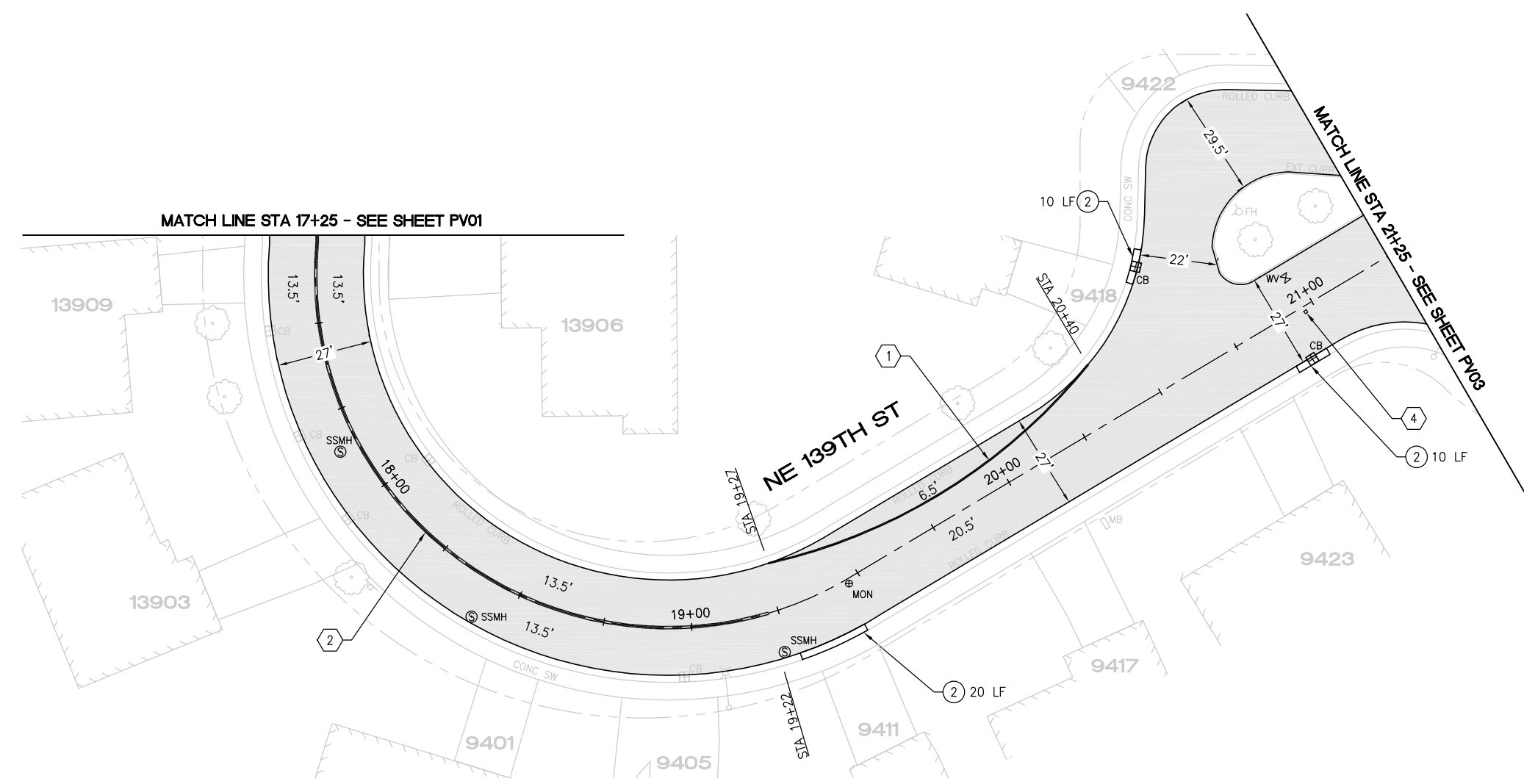
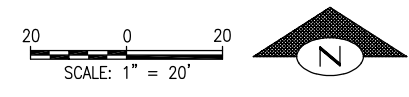
2024 STREET OVERLAY PROJECT

NE 140TH ST + NE 139TH ST

10+00 TO 17+25

REFERENCE SHEET NO. PV01

SHEET 6 OF 53 SHEETS



CONSTRUCTION NOTES

- ① PAVEMENT REPAIR PER DTL 1, SHEET 5
- ② SAWCUT AND REMOVE 2' ASPH CONC PAVEMENT FROM FACE OF GUTTER. REMOVE AND REPLACE ROLLED CURB PER COK STD PLAN CK-R.17D. RESTORE ASPH CONC PAVEMENT TO MATCH EX DEPTH
- ③ SAWCUT AND REMOVE 2' ASPH CONC PAVEMENT FROM FACE OF GUTTER. REMOVE AND REPLACE CONC CURB AND GUTTER PER COK STD PLAN CK-R.17. RESTORE ASPH CONC PAVEMENT TO MATCH EX DEPTH
- ④ REMOVE AND REPLACE CONC SIDEWALK
- ⑤ INSTALL HMA BERM PER DTL 4, SHEET 5
- ⑥ MAINTAIN EXISTING SPILLWAY. REMOVE AND RESET MAILBOX STRUCTURE IF NEEDED DURING PAVING

PAVING NOTES

- REMOVE EX HMA FULL WIDTH, FULL DEPTH (APPROX 2")
- ROADWAY EXCAVATION INCL HAUL (APPROX. 1")
- COMPACT EX SUBGRADE TO 95%
- REPLACE WITH 3" HMA CLASS 1/2"

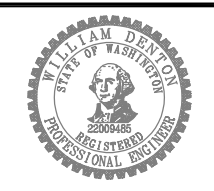
CHANNELIZATION NOTES

- ① 6" PAINTED WHITE EDGE LINE PER COK PLAN CK-R.35
- ② PAINTED DOUBLE YELLOW CENTER LINE PER COK STD PLAN CK-R.31
- ③ WHITE THERMOPLASTIC STOP BAR PER COK STD PLAN CK-R.28
- ④ BLUE TYPE 2B RPM AT FIRE HYDRANT PER STD PLAN CK-R.29
- ⑤ PAINTED RED CURB

May 13, 2024 - 11:31 AM - FLAVIO - Z:\2023 PROJECTS\230113 2024 KIRKLAND OVERLAYS\PLANS\230113_P-OVLY-NE 139TH ST.DWG - Layout Name: PV02

DATE	NO.	REVISION	BY
6/12/24	1	PAVING NOTES	WD
5/10/24	0		

UPI NO.:	FED. AID PROJ. NO.:
SURVEY NO.:	FIELD BOOK(S):
HORZ. DATUM:	VERT. DATUM:
DESIGNED BY: WD	DRAWN BY: FGC

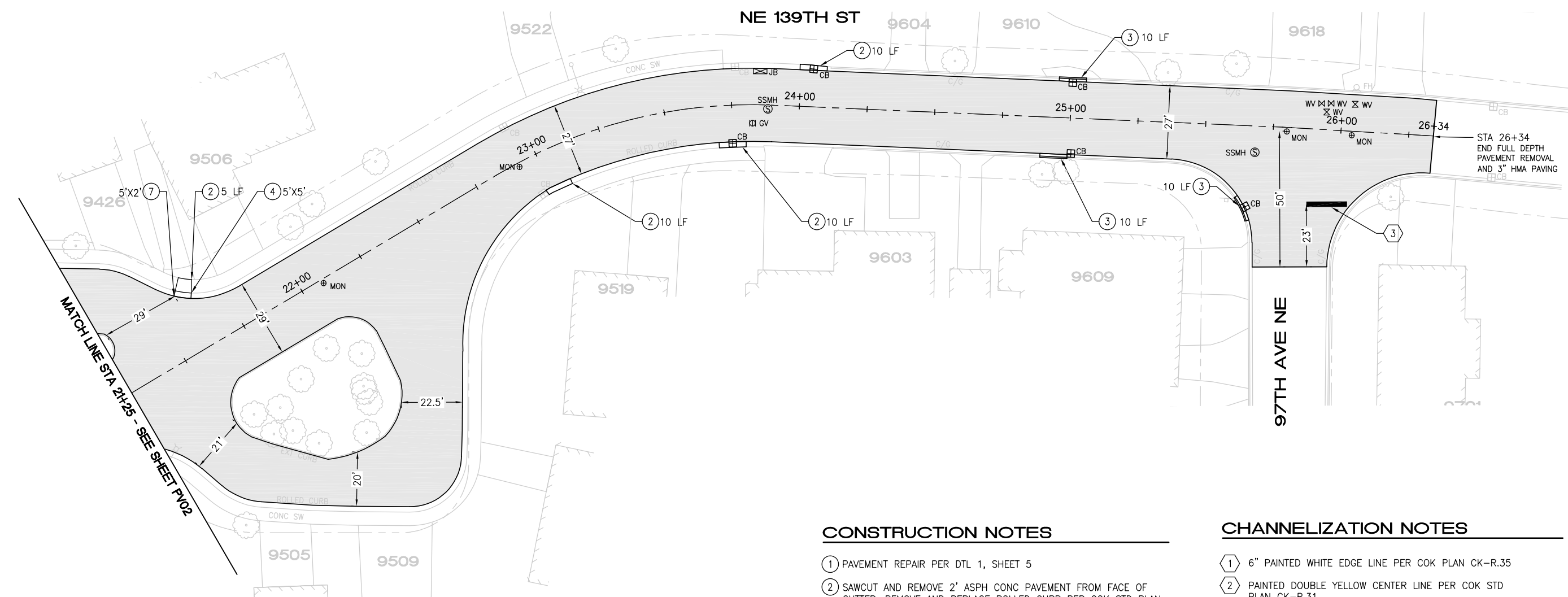
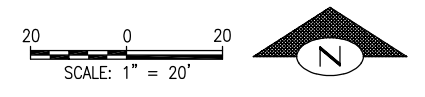


APPROVED BY: _____
DATE: _____

CITY OF KIRKLAND
DEPARTMENT OF PUBLIC WORKS
123 FIFTH AVENUE KIRKLAND, WA 98033
(425) 587-3800 www.kirklandwa.gov

2024 STREET OVERLAY PROJECT
NE 139TH ST
17+25 TO 21+25

REFERENCE SHEET NO. PV02
SHEET 7 OF 53 SHEETS



CONSTRUCTION NOTES

- ① PAVEMENT REPAIR PER DTL 1, SHEET 5
- ② SAWCUT AND REMOVE 2' ASPH CONC PAVEMENT FROM FACE OF GUTTER. REMOVE AND REPLACE ROLLED CURB PER COK STD PLAN CK-R.17D. RESTORE ASPH CONC PAVEMENT TO MATCH EX DEPTH
- ③ SAWCUT AND REMOVE 2' ASPH CONC PAVEMENT FROM FACE OF GUTTER. REMOVE AND REPLACE CONC CURB AND GUTTER PER COK STD PLAN CK-R.17. RESTORE ASPH CONC PAVEMENT TO MATCH EX DEPTH
- ④ REMOVE AND REPLACE CONC SIDEWALK
- ⑤ INSTALL HMA BERM PER DTL 4, SHEET 5
- ⑥ MAINTAIN EXISTING SPILLWAY. REMOVE AND RESET MAILBOX STRUCTURE IF NEEDED DURING PAVING

PAVING NOTES

- REMOVE EX HMA FULL WIDTH, FULL DEPTH (APPROX 2")
- ROADWAY EXCAVATION INCL HAUL (APPROX. 1")
- COMPACT EX SUBGRADE TO 95%
- REPLACE WITH 3" HMA CLASS 1/2"

CHANNELIZATION NOTES

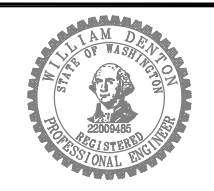
- ① 6" PAINTED WHITE EDGE LINE PER COK PLAN CK-R.35
- ② PAINTED DOUBLE YELLOW CENTER LINE PER COK STD PLAN CK-R.31
- ③ WHITE THERMOPLASTIC STOP BAR PER COK STD PLAN CK-R.28
- ④ BLUE TYPE 2B RPM AT FIRE HYDRANT PER STD PLAN CK-R.29
- ⑤ PAINTED RED CURB

May 13, 2024 - 11:31 AM - FLAVIO - Z:\2023 PROJECTS\230113 2024 KIRKLAND OVERLAYS\PLANS\230113_P-OVL-Y-NE 139TH ST.DWG - Layout Name: PV3

6/12/24	1	PAVING NOTES	WD
5/7/24	0		
DATE	NO.	REVISION	BY



UPI NO.:	FED. AID PROJ. NO.:
SURVEY NO.:	FIELD BOOK(S):
HORZ. DATUM:	VERT. DATUM:
DESIGNED BY: WD	DRAWN BY: FGC



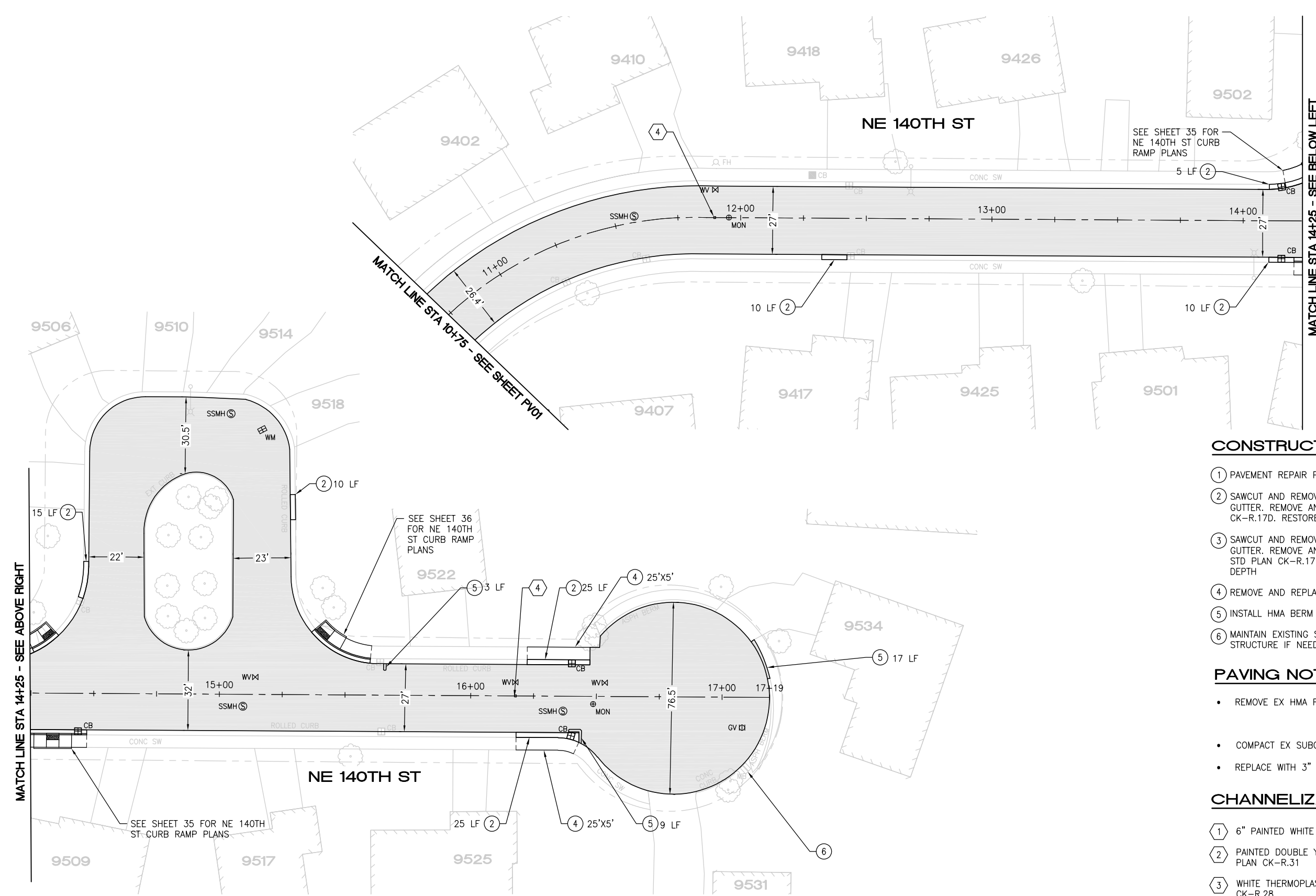
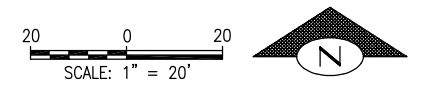
APPROVED BY: _____
DATE: _____

CITY OF KIRKLAND
DEPARTMENT OF PUBLIC WORKS
123 FIFTH AVENUE KIRKLAND, WA 98033
(425) 587-3800 www.kirklandwa.gov

2024 STREET OVERLAY PROJECT
NE 139TH ST
21+25 TO 26+34

REFERENCE SHEET NO. PV03
SHEET 8 OF 53 SHEETS

May 13, 2024 - 11:32 AM - FLAVIO - Z:\2023 PROJECTS\230113 2024 KIRKLAND OVERLAYS\PLANS\230113_P-OVL-Y-NE 139TH ST.DWG - Layout Name: PV04



CONSTRUCTION NOTES

- ① PAVEMENT REPAIR PER DTL 1, SHEET 5
- ② SAWCUT AND REMOVE 2' ASPH CONC PAVEMENT FROM FACE OF GUTTER. REMOVE AND REPLACE ROLLED CURB PER COK STD PLAN CK-R.17D. RESTORE ASPH CONC PAVEMENT TO MATCH EX DEPTH
- ③ SAWCUT AND REMOVE 2' ASPH CONC PAVEMENT FROM FACE OF GUTTER. REMOVE AND REPLACE CONC CURB AND GUTTER PER COK STD PLAN CK-R.17. RESTORE ASPH CONC PAVEMENT TO MATCH EX DEPTH
- ④ REMOVE AND REPLACE CONC SIDEWALK
- ⑤ INSTALL HMA BERM PER DTL 4, SHEET 5
- ⑥ MAINTAIN EXISTING SPILLWAY. REMOVE AND RESET MAILBOX STRUCTURE IF NEEDED DURING PAVING

PAVING NOTES

- REMOVE EX HMA FULL WIDTH, FULL DEPTH (APPROX 3")
- COMPACT EX SUBGRADE TO 95%
- REPLACE WITH 3" HMA CLASS 1/2"

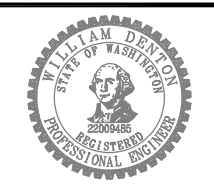
CHANNELIZATION NOTES

- ① 6" PAINTED WHITE EDGE LINE PER COK PLAN CK-R.35
- ② PAINTED DOUBLE YELLOW CENTER LINE PER COK STD PLAN CK-R.31
- ③ WHITE THERMOPLASTIC STOP BAR PER COK STD PLAN CK-R.28
- ④ BLUE TYPE 2B RPM AT FIRE HYDRANT PER STD PLAN CK-R.29

DATE	NO.	REVISION	BY
6/12/24	1	PAVING NOTES	WD
5/10/24	0		



UPI NO.:	FED. AID PROJ. NO.:
SURVEY NO.:	FIELD BOOK(S):
HORZ. DATUM:	VERT. DATUM:
DESIGNED BY: WD	DRAWN BY: FGC



APPROVED BY: _____
DATE: _____



2024 STREET OVERLAY PROJECT
NE 140TH ST
10+75 TO 17+20

REFERENCE SHEET NO. PV04
SHEET 9 OF 53 SHEETS