



# KIRKLAND PARK BOARD

May 22, 2024; 7:00 p.m.  
Peter Kirk Room, Kirkland City Hall  
123 5th Avenue Kirkland, WA 98033

## **Land Acknowledgement**

*We acknowledge that the Southern Salish Sea region lies on the unceded and ancestral land of the Coast Salish peoples, the Duwamish, Muckleshoot, Puyallup, Skykomish, Snoqualmie, Snohomish, Suquamish and Tulalip tribes and other tribes of the Puget Sound Salish people, and that present-day City of Kirkland is in the traditional heartland of the Lake People and the River People. We honor with gratitude the land itself, the First People – who have reserved treaty rights and continue to live here since time immemorial – and their ancestral heritage.*

## **Mission Statement**

*The mission of the Park Board shall be to provide policy advice and assistance to the Department of Parks and Community Services and City Council in order to ensure the effective provision of Parks and Community Services programs and facilities to the residents of the City of Kirkland.*

# AGENDA

1. CALL TO ORDER
2. ROLL CALL
3. AGENDA ADDITIONS/CHANGES
4. ITEMS FROM THE AUDIENCE
5. APPROVAL OF MINUTES
  - a. April 24, 2024
6. BUSINESS ITEMS
  - a. Totem Lake Park Mural
  - b. Volunteer Program Update
  - c. Fisk Family Park Development Update
  - d. Everest Park Restroom 10% Design Update
7. COMMUNICATIONS
  - a. Correspondence
  - b. [Department Monthly Report](#)
  - c. Staff Updates and Information
  - d. Comments from the Chair
8. FUTURE AGENDA ITEM REQUESTS
9. ADJOURNMENT

*Next Park Board Meeting: June 26, 2024*

---

**Alternate Formats:** Persons with disabilities may request materials in alternative formats. Persons with hearing impairments may access the Washington State Telecommunications Relay Service at 711.

**Title VI:** Kirkland's policy is to fully comply with Title VI of the Civil Rights Act by prohibiting discrimination against any person on the basis of race, color, national origin or sex in the provision of benefits and services resulting from its programs and activities. Any person who believes his/her Title VI protection has been violated, may file a complaint with the City. To request an alternate format, file a complaint or for questions about Kirkland's Title VI Program, contact the Title VI Coordinator at 425-587-3011 or [titlevicoordinator@kirklandwa.gov](mailto:titlevicoordinator@kirklandwa.gov).

The City of Kirkland strives to accommodate people with disabilities. Please contact the City Clerk's Office at 425.587.3190, or for TTY Services call 425.587.3111 (by noon the work day prior to the meeting) if we can be of assistance. If you should experience difficulty hearing the proceedings, please bring this to the attention of the Chairperson by raising your hand.

**KIRKLAND PARK BOARD  
Minutes of Regular Meeting  
April 24, 2024**

**1. CALL TO ORDER**

The April 24, 2024 Park Board regular meeting was called to order at 7:00 PM by Chair Mike Holland.

**2. ROLL CALL**

Members Present: Board member Juliana Born, Board member Katherine Kearny, Board member Jared Silvia, Board member Crystal Thimsen, Vice Chair Amy Ambrosini, Chair Mike Holland

Members Absent: Board member Tara Bobbarjung, Board member Tammy Cohen

Staff Present: Director Lynn Zwaagstra, Deputy Director John Lloyd, Parks Maintenance & Operations Manager Jason Filan, Recreation Manager Sara Shellenbarger, Park Planning & Development Manager Mary Gardocki, Recreation Supervisor Maryke Burgess, Program Coordinator Jazmine Quintero, Administrative Assistant Emily Lima Welch

Recording Secretary: Administrative Assistant Emily Lima Welch

**3. WELCOME NEW PARK BOARD MEMBERS**

New board members, Jared Silvia and Juliana Born were introduced and welcomed by staff and board members.

**PARK BOARD RECESSED AT 7:13PM**

**PARK BOARD RECONVENED AT 7:17PM**

**4. AGENDA ADDITIONS/CHANGES**

No changes.

**5. ITEMS FROM THE AUDIENCE**

Roshan P.

**6. APPROVAL OF MINUTES**

The March 27, 2024 Park Board meeting minutes were presented to the Board and approved by unanimous consent.

**7. BUSINESS ITEMS**

a. Park Board Roles and Responsibilities

Lynn Zwaagstra, Director outlined the roles, responsibilities, and expectations of Park Board members, and the function of the Park Board within City and City Council operations.

Staff answered questions and received comments from the Board.

b. 4<sup>th</sup> of July Parade Preview

Jazmine Quintero, Program Coordinator provided a preview of the 2024 Celebrate Kirkland 4<sup>th</sup> of July parade and community event, highlighting the 25<sup>th</sup> Anniversary of the event and how the Park Board can be involved with this event.

Staff answered questions from the Board.

**PARK BOARD RECESSED AT 8:07PM**  
**PARK BOARD RECONVENED AT 8:12PM**

c. PROS Plan Check In

Mary Gardocki, Park Planning & Development Manager lead a discussion of PROS Plan Section I: Goals, Objectives, and Action Plan.

The Board and Staff discussed PROS goals, changes and updates, and priorities.

d. Park Board Member Reports

Board Member Silvia reported that the Juanita Neighborhood hosted an Earth Day event, attended by Kirkland Conserves and by Green Kirkland Partnership.

Staff answered questions from the Board.

No additional park board member reports were presented.

**8. COMMUNICATIONS**

a. Correspondence

No correspondence received.

b. Department Monthly Report

The department monthly report was emailed to Board members and posted online.

c. Staff Updates and Information

Deputy Director Lloyd reminded the Board of the annual Community Appreciation Night upcoming on May 15<sup>th</sup>. He also noted that the Houghton Park & Ride is actively in progress.

Deputy Director Lloyd opened the floor to reassign neighborhood association meetings. Board Member Born agreed to be the liaison for the Market Neighborhood Association, and Board Member Silvia will liaison for the North Rose Hill Neighborhood Association.

Park Planning & Development Manager Gardocki reported on the development of a mural on the restroom building at Totem Lake Park. Urban Works will assist City Staff to match them with artists for the project, and the concept art will be presented to Park Board in future sessions. She also mentioned that Parks Staff will be working with the Parks & Community Foundation to continue to develop the Fisk Family Park.

Recreation Manager Shellenbarger reported that both Recreation & Parks recruitment for the summer season is going well, though Recreation still has a few open postings.

Staff answered questions from the Board.

d. Comments from the Chair  
No additional comments.

### **8. FUTURE AGENDA ITEM REQUESTS**

Next month's agenda is expected to include the Fisk Family Park development plan, volunteer program update, and Marina Park 60% development update.

### **9. ADJOURNMENT**

Chair Mike Holland adjourned the meeting at 9:15 PM by unanimous consent.

---

Emily Lima Welch, Recording Secretary  
Parks and Community Services

---

Mike Holland, Chair  
Park Board

DRAFT





**CITY OF KIRKLAND**  
**Department of Parks & Community Services**  
123 Fifth Ave, Kirkland, WA 98033 · 425.587.3300  
[www.kirklandwa.gov](http://www.kirklandwa.gov)

---

## **MEMORANDUM**

**To:** Park Board

**From:** Mary Gardocki, Park Planning and Development Manager  
Jenna McInnis, Solid Waste Programs Lead

**Date:** May 16, 2024

**Subject:** Totem Lake Park Mural

### **RECOMMENDATION:**

It is recommended that the Park Board receive a presentation about a proposed mural at Totem Lake Park. Jenna McInnis, Solid Waste Programs Lead, will provide a brief overview of the project's scope, schedule and budget and the grant funding that aligns with this project.

**Attachment A:** Totem Lake Park Mural Presentation



# Mural for Totem Lake Park

Jenna McInnis

Solid Waste Program Lead

[jmcinnis@kirklandwa.gov](mailto:jmcinnis@kirklandwa.gov)

DESIGNED BY:  
Jesse Beoway



# Totem Lake Park







# Project Summary

- Using King County Waste Reduction and Recycling grant funds
- Theme: waste reduction



# Project Summary

- Contracted with Urban Artworks

*We are a Washington state based 501(c)(3) nonprofit organization whose mission is to engage youth, artists, and communities in the creation of public art that inspires connections and honors their voice.*

- Will bring two designs to KCAC and Park Board







# Project Summary

- Targeting installation September 2024
- Community paint day



# Similar project inspiration





**CITY OF KIRKLAND**  
**Department of Parks & Community Services**  
123 Fifth Ave, Kirkland, WA 98033 · 425.587.3300  
[www.kirklandwa.gov](http://www.kirklandwa.gov)

---

## **MEMORANDUM**

**To:** Park Board

**From:** Jodie Galvan, Parks Management Supervisor  
Jason Filan, Parks Management Manager

**Date:** May 22, 2024

**Subject:** Parks and Community Services Volunteer Programs

### **RECOMMENDATION:**

It is recommended that the Park Board receive a presentation about Volunteer programs and opportunities in Parks and Community Services.

### **BACKGROUND DISCUSSION:**

In 2023 the City of Kirkland engaged 2,337 volunteers who contributed a total of 17,019 hours of their time and talents. These outstanding contributions represent a community benefit valued at \$639,710. The majority of these volunteer hours are associated with Parks and Community Services (PCS) programs, with the Green Kirkland Partnership (GKP) engaging 1,824 volunteers who gave 7,897 hours valued at \$297,164.

Most volunteers are members of the local community with different interests and passions, but participants also come from specific programs or groups including:

- Corporations and businesses
- Court appointments
- Churches
- Kiwanis Club
- Scouting programs; and
- Wreaths Across America

Kirkland Parks and Community Services partners with the community throughout the year to provide public places and programs that are safe, inclusive, and fun. PCS volunteers can participate in a one-time event or serve in an ongoing role. Depending on individual interest, volunteer opportunities are available to across our entire department and even in partnership with other local organizations within our parks.

For those interested in volunteering in our parks, the Parks Management division has several opportunities, most notably, the Green Kirkland Partnership (GKP). The GKP engages the community in the restoration and care of natural areas in City parks via volunteer events throughout the year. New in 2024 is the Parks Beautification Program (PBP). The PBP is modeled after the GKP in that it offers both one-time and ongoing volunteer opportunities for individuals or groups in Kirkland's parks. Activities during the events vary by season and include



weeding, mulching, planting, raking up milfoil, picking up litter, and much more. If a group of volunteers would like to participate in park beautification activities at the same location several times throughout the year they can do so by 'adopting' the park via the Adopt-a-Park program.

The recreation division offers several volunteer opportunities as well. Our Pee Wee Soccer, Pee Wee Basketball, and Youth Basketball Leagues rely on volunteer coaches. Each year staff recruit about 250 volunteer coaches who contribute over 4,500 hours per year to our community. Volunteers are also integral to the congregate meal program at Peter Kirk Community Center, where volunteers help cook and serve a nutritious meal for seniors twice a week. At the North Kirkland Community Center, about 60 volunteers each year help with preschool events such as Monster Bash and the Snowflake Ball. The community building events hosted by the recreation division also rely on volunteers to help with set-up, clean-up, and facilitating activities. Over 250 volunteers each year serve at the Celebrate Kirkland 4<sup>th</sup> of July Parade, Harvest Festival, See Spot Splash, Lunar New Year, and Dia de los Muertos events.

PCS partners with and supports different community organizations working in our park system. For example, City Fruit hosts volunteer events at McAuliffe Park throughout the year caring for and harvesting from the dozens of fruit trees at that location. City Fruit makes the harvest available to the community through their partnerships with regional food banks and community kitchens. Another example is our work with Tilth Alliance who hosts a demonstration garden at McAuliffe Park and offer volunteer events and garden classes to the community throughout the year.

Finally, the City relies on volunteers to serve on our boards and commissions. Within PCS, staff work with volunteers serving on Park Board, the Human Services Commission, Youth Council, and Senior Council. These volunteers advise the City Council on vital public policy matters.

More information about all of Kirkland's volunteer programs can be found on the City's website at <https://www.kirklandwa.gov/Government/City-Managers-Office/Volunteer-Opportunities#section-1>.



**CITY OF KIRKLAND**  
**Department of Parks & Community Services**  
123 Fifth Ave, Kirkland, WA 98033 · 425.587.3300  
[www.kirklandwa.gov](http://www.kirklandwa.gov)

---

## **MEMORANDUM**

**To:** Park Board

**From:** Mary Gardocki, Park Planning and Development Manager

**Date:** May 16, 2024

**Subject:** Fisk Family Park

### **RECOMMENDATION:**

It is recommended that the Park Board receive a briefing about Fisk Family Park and discuss with the Kirkland Parks and Community Foundation. Staff will provide a presentation recapping the discussion and feedback received during the site visit held on May 7. The attachment provides the same background framework for the Park Board/KPCF discussion. Staff will be seeking feedback on the options presented in the handout and propose next steps based on this feedback.

**Attachment A:** Handout from May 7 Site Visit

# Fisk Family Park

- Site Visit May 7
- Scope: Add passive amenities and evaluate shed
- Shed condition
  - Wood frame and plywood construction rotting/failing
  - No foundation
  - Extensive water damage
  - Rat infestation
- Small buildable area
  - outside buffer

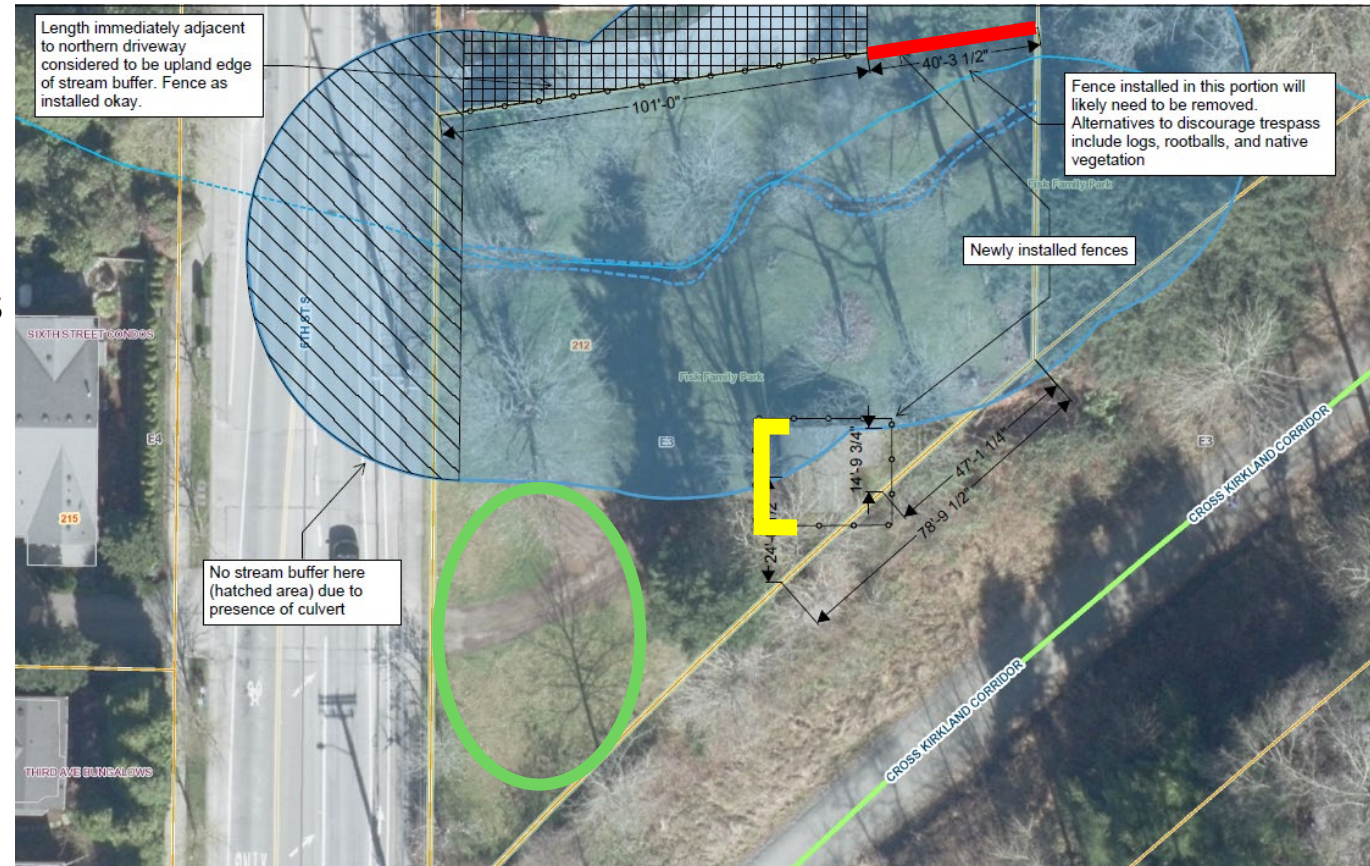
Title	Fisk Family Park - Site Visit		
Required	<input type="radio"/> Lynn Zwaagstra <input type="radio"/> Jason Filan <input type="radio"/> hawkdsi@ix.netcom.com <input type="radio"/> Lee Ann Skipton <input type="radio"/> John Lloyd <input type="radio"/> Brian Baker <input type="radio"/> Kelly Wilkinson <input type="radio"/> Tom Neir <tom@kpcf.org> <input type="radio"/> Sally J Otten <sally@kpcf.org> <input type="radio"/> Mike Holland <input type="radio"/> Amy Ambrosini		
Optional	<input type="radio"/> Jonathan Heuer <jonathan@kpcf.org> <input type="radio"/> Colin Carter <input type="radio"/> Nick Cilluffo		
Start time	<input type="text" value="Tue 5/7/2024"/> <input type="text" value="2:00 PM"/>	<input type="checkbox"/> All day	<input type="checkbox"/> Time zones
End time	<input type="text" value="Tue 5/7/2024"/> <input type="text" value="3:00 PM"/>	<input type="button" value="Make Recurring"/>	
Location	Fisk Family Park		





# Fisk Family Park

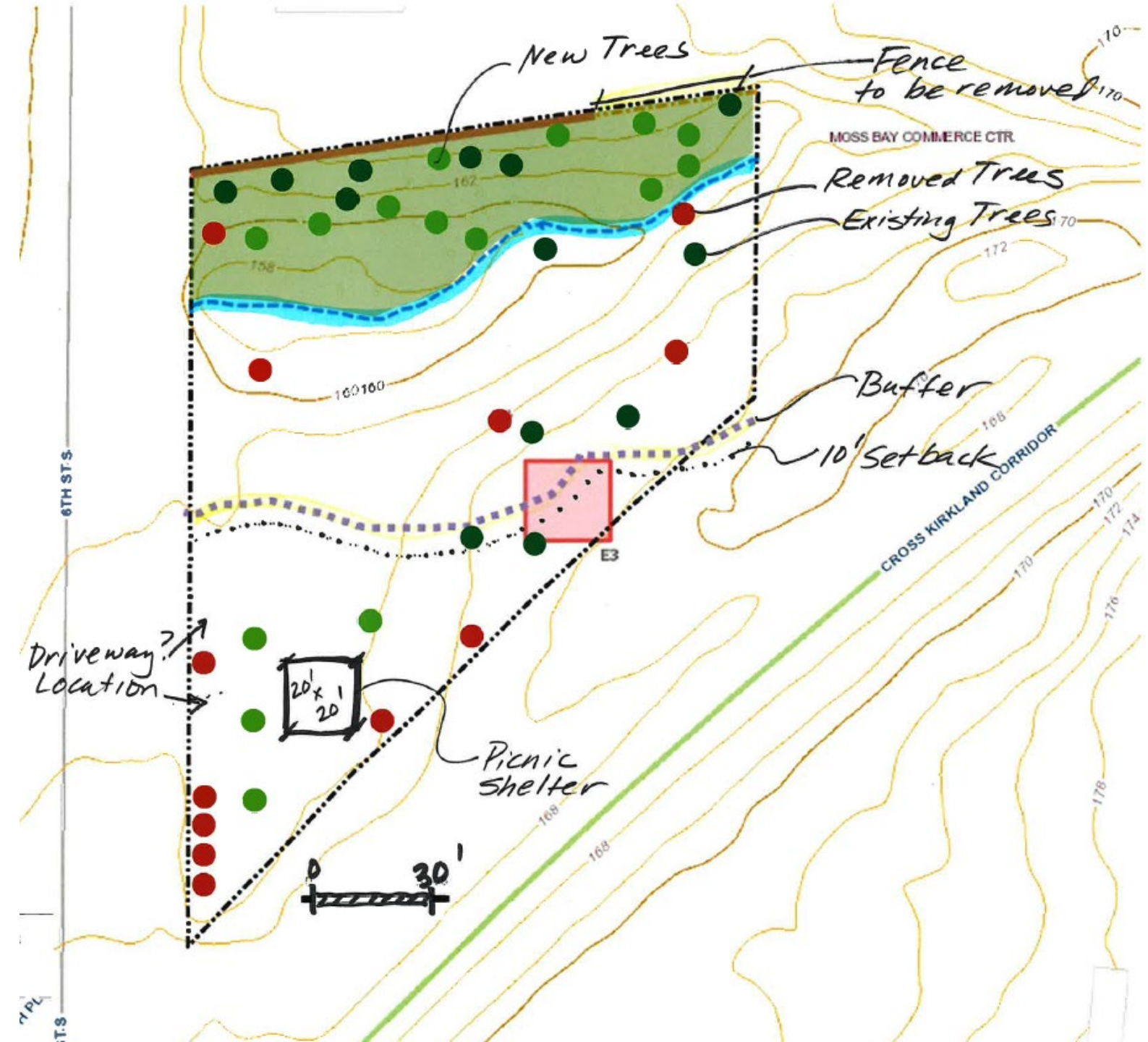
- Work to date
  - Clean and safe
  - Removals
    - Invasives
    - Poor condition trees
      - safety removals
    - Bridge
  - Installations
    - Park Sign
    - Seeding, 22 trees and groundcovers
    - Fence around shed (**yellow**)
      - Front and half sides of shed
    - Boundary fence for neighbor
- 40' of fence removal required (**red**)
  - Within 50' buffer of stream
- ~2,000 s.f. of buildable area (**green**)
- Met with Planning (Kelly)





# Fisk Family Park

- Vision
  - Planning and Design
    - Options including a 500' picnic shelter, pathways, bike rack, trash container
  - Options
    - Keep shed as is
    - Renovate shed
    - Replace shed in place
    - Remove shed, salvage memorial elements
    - Add picnic shelter
- PB/KPCF Joint Meeting May 22
- KPCF fundraiser June





**CITY OF KIRKLAND**  
**Department of Parks & Community Services**  
123 Fifth Ave, Kirkland, WA 98033 · 425.587.3300  
[www.kirklandwa.gov](http://www.kirklandwa.gov)

---

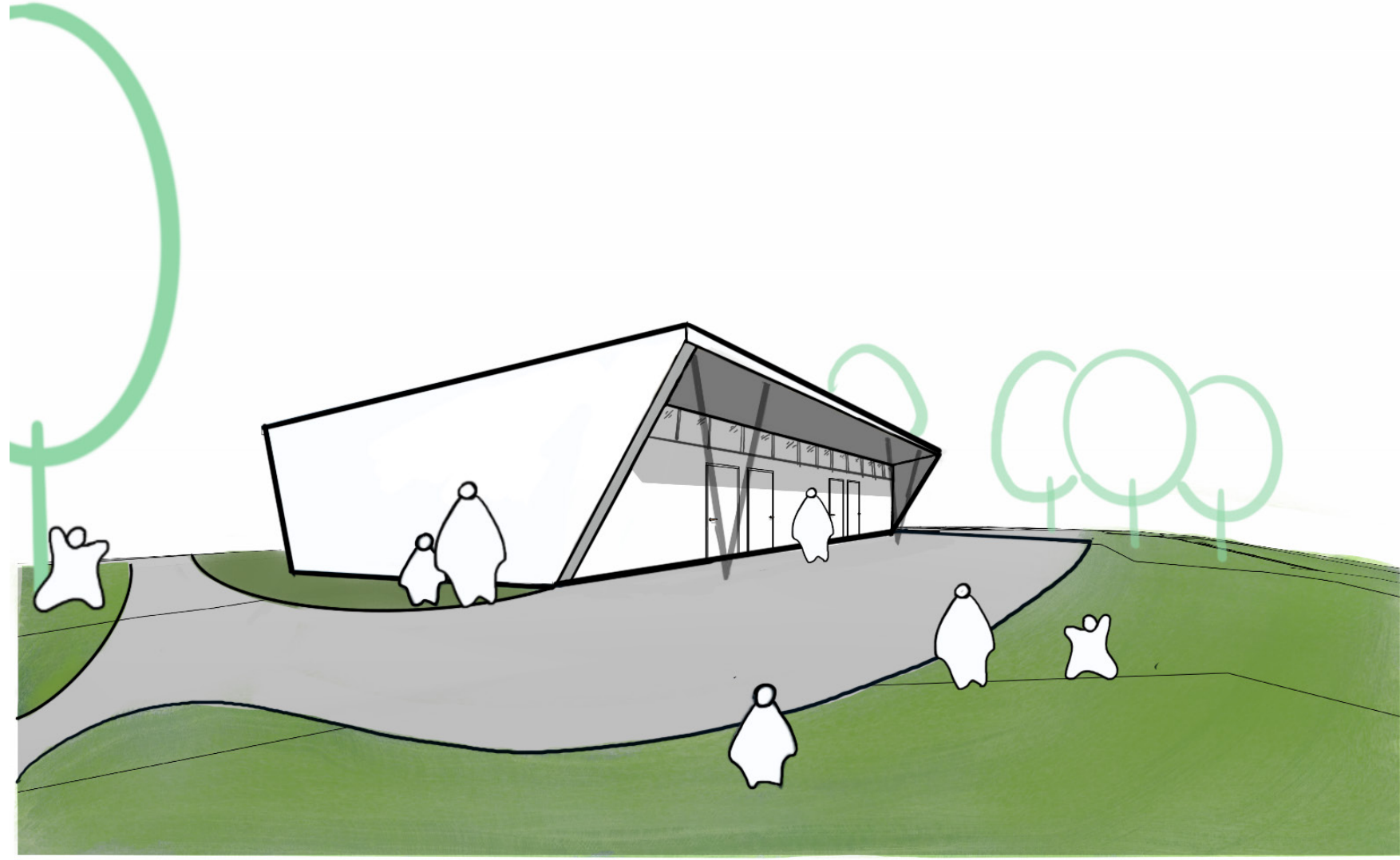
**MEMORANDUM**

**To:** Park Board  
**From:** Mary Gardocki, Park Planning and Development Manager  
**Date:** May 16, 2024  
**Subject:** Everest Park Restroom Replacement

**RECOMMENDATION:**

It is recommended that the Park Board receive a presentation update on the Everest Park Restroom Replacement. The project has reached 10% design and is progressing towards 30% design. This is an opportunity for the Park Board to provide input on the design during this concept design phase.

**Attachment A:** 10% Concept Drawing Set and Cost Estimate



EVEREST PARK RESTROOM REPLACEMENT

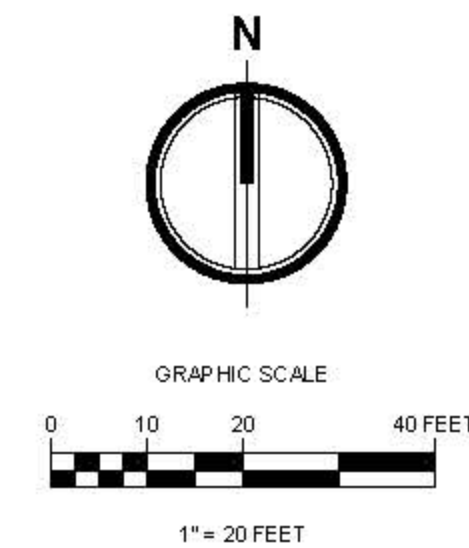
10% CONCEPT DESIGN

03/27/2024



# EVEREST PARK

## A PORTION OF THE SW 1/4 OF THE NE 1/4 OF SEC. 08, TWN. 25N., RGE. 5 E. W.M. CITY OF KIRKLAND, KING COUNTY, WASHINGTON.



2215 North 30th Street, Suite 200 Tacoma, WA 98403  
253.383.2422 TEL. 253.383.2572 FAX www.ahbl.com WEB

Project Title:

### EVEREST PARK - RESTROOM REPLACEMENT

Client:  
SCHEMATA WORKSHOP, INC.

1720 12TH AVE  
SEATTLE, WA 98122  
GEOFF E. ANDERSON, AIA

Job No.

223040951

Issue Set & Date:

FEBRUARY 13, 2024



Preliminary

02/13/2024 1:03:35 PM

NOTICE:  
ALLEGATION OF THE RECORD SHALL WAIVER THE PROFESSIONAL SEAL AND SIGNATURE OF THE SURVEYOR. THIS DOCUMENT IS NOT VALID UNLESS THE SURVEYOR'S SEAL AND SIGNATURE ARE PRESENT. THE SURVEYOR'S SEAL AND SIGNATURE ARE REQUIRED FOR THE DOCUMENT TO BE VALID. THIS DOCUMENT IS NOT VALID UNLESS THE SURVEYOR'S SEAL AND SIGNATURE ARE PRESENT. THE SURVEYOR'S SEAL AND SIGNATURE ARE REQUIRED FOR THE DOCUMENT TO BE VALID.

#### LEGAL DESCRIPTION

ABBREVIATED LEGAL PER COUNTY ASSESSOR:  
TRS 28 TO 33 INCL & N 1/2 OF 27 & 34 ALSO 53 TO 58 INCL & 68 TO 71 INCL OF ALEXANDER ACRE TRS VOL 12 PG 59 OF RECORDS OF K C

#### SURVEYOR'S NOTE

THE BOUNDARY AS SHOWN WAS MADE WITHOUT THE BENEFIT OF A TITLE.

#### VERTICAL DATUM

NAVD 1988 VERTICAL DATUM ON ORTHOMETRICALLY CORRECTED GPS OBSERVATIONS USING WSRN AND GEOID 2012A.

#### BASIS OF BEARING

NAD 1983/11 WASHINGTON STATE PLANE NORTH PROJECTION, BASED ON GPS OBSERVATIONS USING WSRN AND GEOID 2012A. UNITS OF MEASUREMENT ARE US SURVEY FEET.

#### UTILITY NOTES

1. SURFACE UTILITY FACILITIES ARE SHOWN HEREON PER FIELD LOCATED VISIBLE EVIDENCE. THERE MAY BE UTILITIES THAT EXIST ON THIS SITE OTHER THAN THOSE GRAPHICALLY DEPICTED HEREON.
2. UNDERGROUND (BURIED) UTILITIES SHOWN HEREON ARE BASED ON COMBINATIONS OF VISIBLE SURFACE EVIDENCE, UTILITY LOCATOR MARKINGS AND RECORD DATA (SUCH AS AS-BUILT OR UTILITY DESIGN DRAWINGS). ALL UNDERGROUND UTILITIES SHOWN HEREON ARE APPROXIMATE AND, IN SOME CASES, ARE SHOWN AS STRAIGHT LINES BETWEEN FIELD LOCATED SURFACE UTILITY FACILITIES. UNDERGROUND UTILITIES MAY HAVE BENDS, CURVES OR CONNECTIONS WHICH ARE NOT SHOWN.
3. ALTHOUGH LOCATIONS OF UNDERGROUND UTILITIES BASED ON UTILITY LOCATOR MARKINGS AND RECORD DATA (SUCH AS AS-BUILT OR UTILITY DESIGN DRAWINGS) ARE DEEMED RELIABLE, AHBL, INC. ASSUMES NO LIABILITY FOR THE ACCURACY OF SAID DATA.
4. CALL 1-800-424-5555 BEFORE ANY CONSTRUCTION.

#### EQUIPMENT USED

3" TOTAL STATION UTILIZING STANDARD FIELD TRAVERSE METHODS FOR CONTROL AND STAKING.

#### SITE INFORMATION

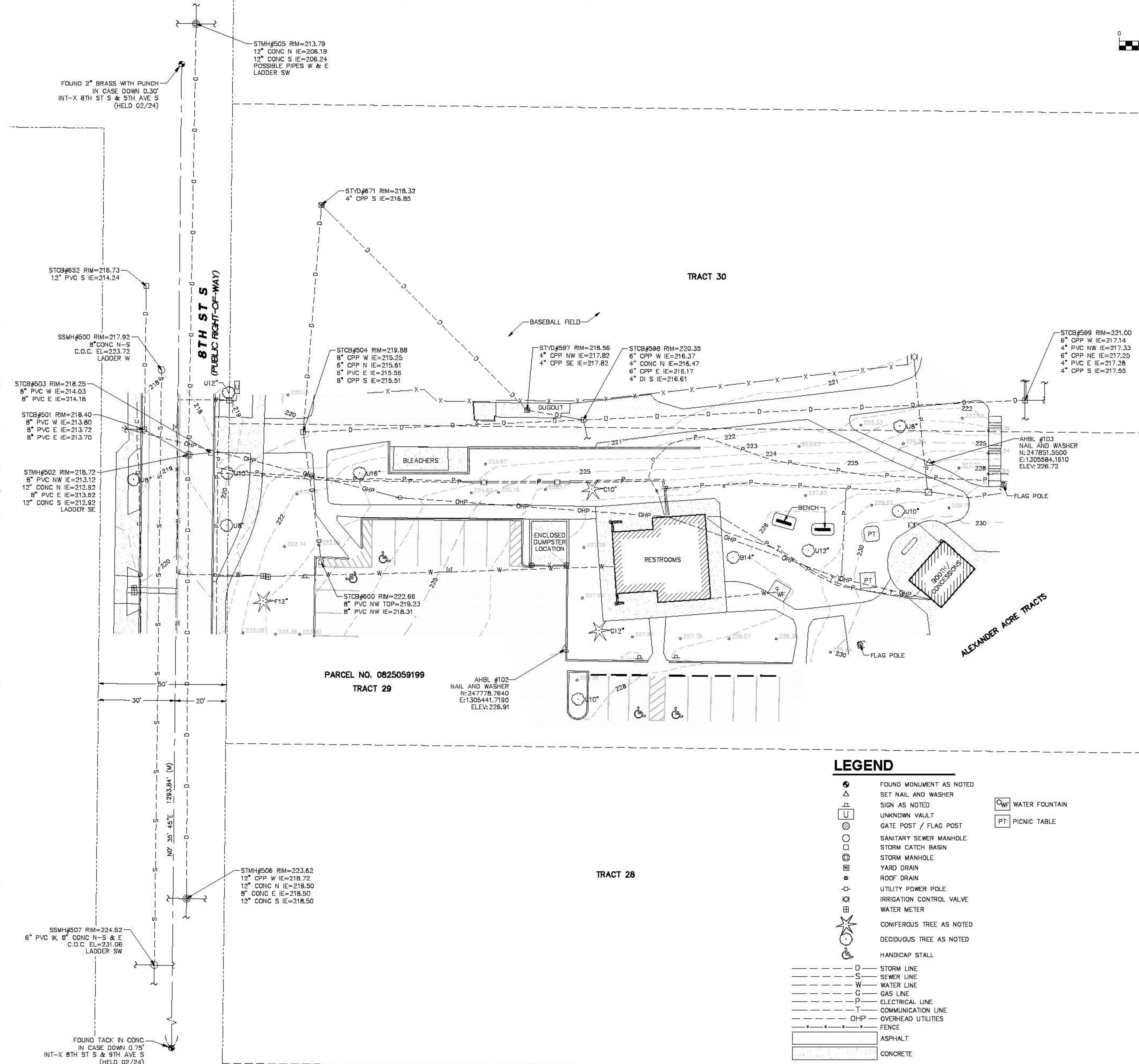
PARCEL NO. 0825059199

ADDRESS:  
500 8TH ST S  
KIRKLAND, WA 98033

#### SURVEYOR'S CERTIFICATE

I, DAVID C. FOLLANSBEE, A PROFESSIONAL LAND SURVEYOR IN THE STATE OF WASHINGTON, HEREBY CERTIFY THAT THIS MAP CORRECTLY REPRESENTS A SURVEY MADE BY ME OR UNDER MY DIRECT SUPERVISION IN FEBRUARY 2024 IN COMPLIANCE WITH THE REQUIREMENTS OF THE SURVEY RECORDING ACT, CHAPTER 58.09 R.C.W. AND 332-130 W.A.C., AT THE REQUEST OF GEOFF E. ANDERSON.

DAVID C. FOLLANSBEE, PLS 45161 DATE



#### LEGEND

- |     |                                   |    |                |
|-----|-----------------------------------|----|----------------|
| ●   | FOUND MONUMENT AS NOTED           | WF | WATER FOUNTAIN |
| ▲   | SET NAIL AND WASHER SIGN AS NOTED | PT | PICNIC TABLE   |
| U   | UNKNOWN VAULT                     |    |                |
| ⊗   | GATE POST / FLAG POST             |    |                |
| ○   | SANITARY SEWER MANHOLE            |    |                |
| □   | STORM CATCH BASIN                 |    |                |
| ⊕   | STORM MANHOLE                     |    |                |
| ⊖   | YARD DRAIN                        |    |                |
| ○   | ROOF DRAIN                        |    |                |
| ○   | UTILITY POWER POLE                |    |                |
| ○   | IRRIGATION CONTROL VALVE          |    |                |
| ○   | WATER METER                       |    |                |
| ○   | CONIFEROUS TREE AS NOTED          |    |                |
| ○   | DECIDUOUS TREE AS NOTED           |    |                |
| ○   | HANDICAP STALL                    |    |                |
| --- | STORM LINE                        |    |                |
| --- | SEWER LINE                        |    |                |
| --- | WATER LINE                        |    |                |
| --- | GAS LINE                          |    |                |
| --- | ELECTRICAL LINE                   |    |                |
| --- | COMMUNICATION LINE                |    |                |
| --- | OVERHEAD UTILITIES                |    |                |
| --- | FENCE                             |    |                |
| --- | ASPHALT                           |    |                |
| --- | CONCRETE                          |    |                |

- △
  - △
  - △
  - △
  - △
- Revisions:

Sheet Title:  
**BOUNDARY AND TOPOGRAPHIC SURVEY**

Designed by: FS    Drawn by: FS    Checked by: DF

Sheet No.

1

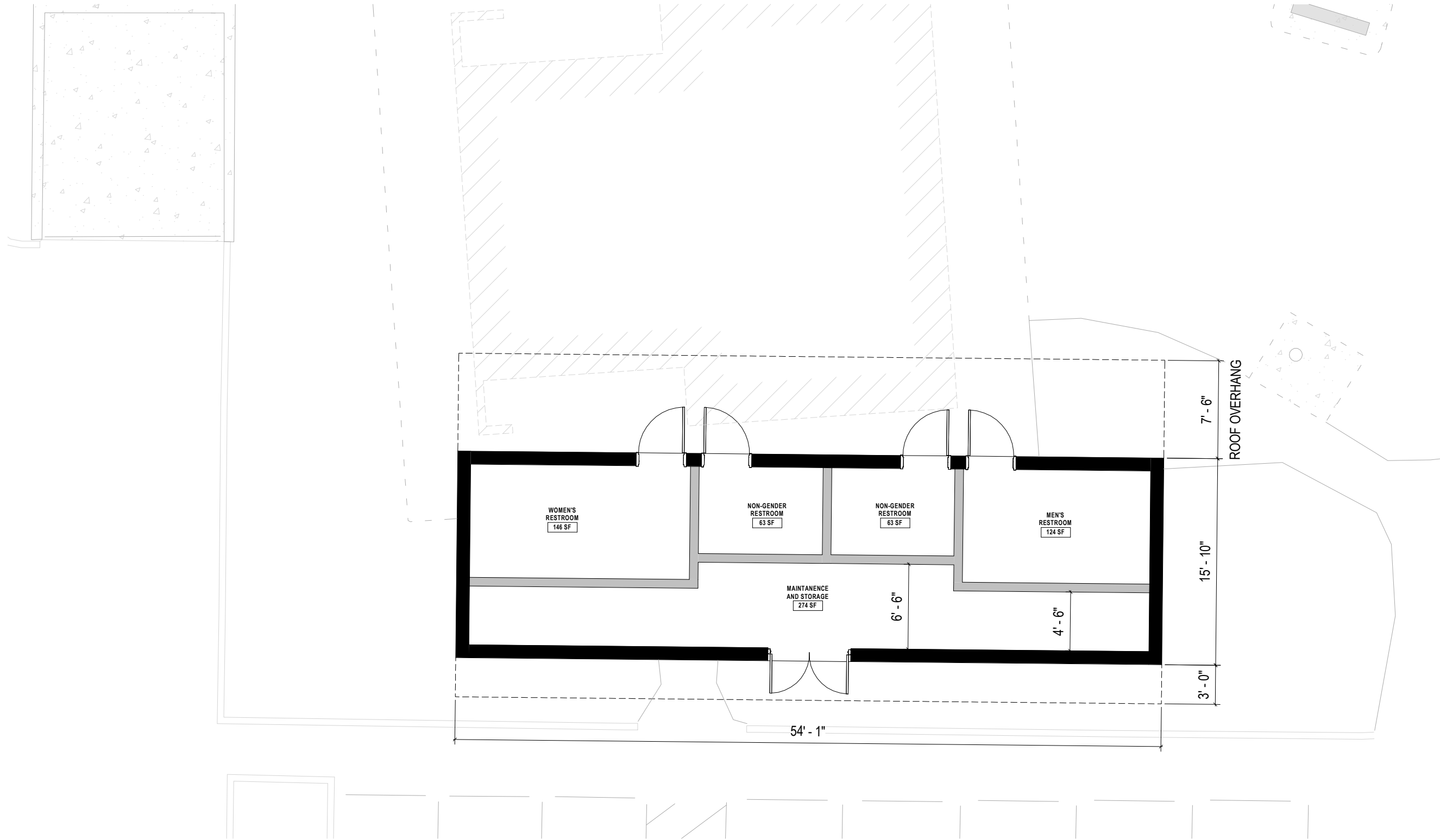
1 of 1 Sheets





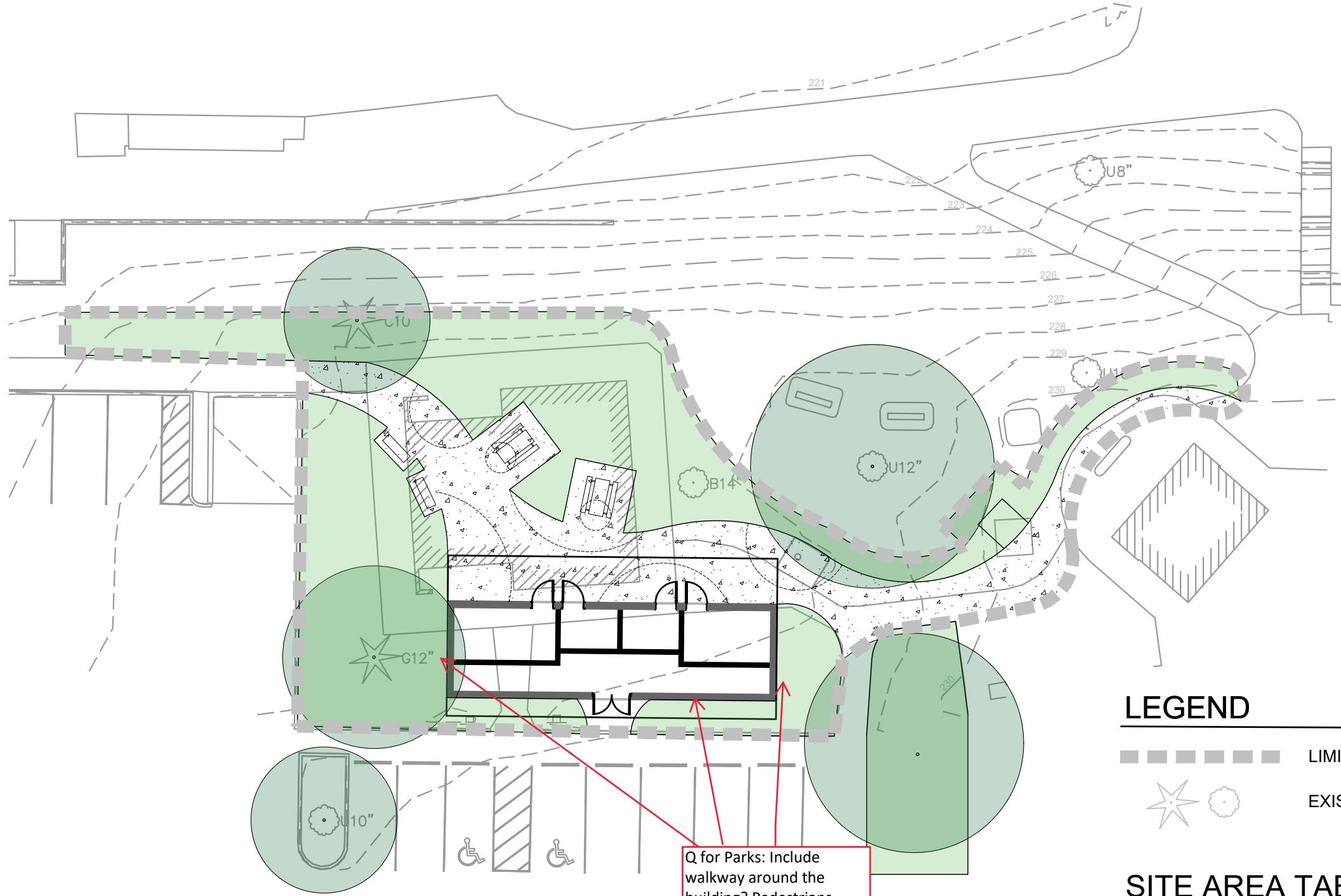
**EVEREST PARK RESTROOM REPLACEMENT**  
 ARCHITECTURAL SITE PLAN  
 03/27/2024







**EVEREST PARK RESTROOM REPLACEMENT**  
 ARCHITECTURAL FLOOR PLAN  
 03/27/2024





Q for Parks: Include walkway around the building? Pedestrians shouldn't need to walk around it, but maintenance would.

### LEGEND

-  LIMIT OF WORK
-  EXISTING TREES TO REMAIN

### SITE AREA TABLE

EXISTING IMPERVIOUS AREA: 1743 SQ FT

PROPOSED IMPERVIOUS AREA: 1978 SQ FT

Reduce sidewalks to create net impervious that is no greater than 49 SF additional impervious. Cost estimate does not include 90.130 buffer mitigation plantings to offset this additional SF.

GRAPHIC SCALE



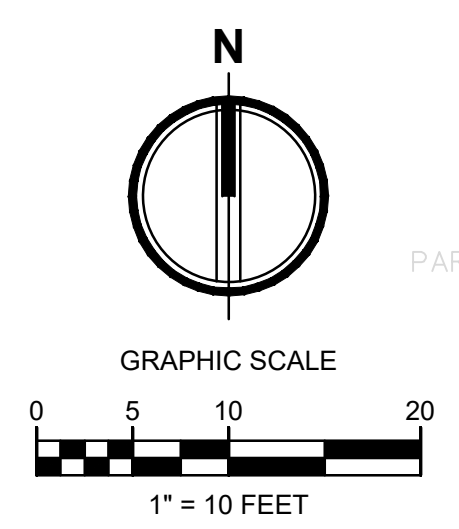
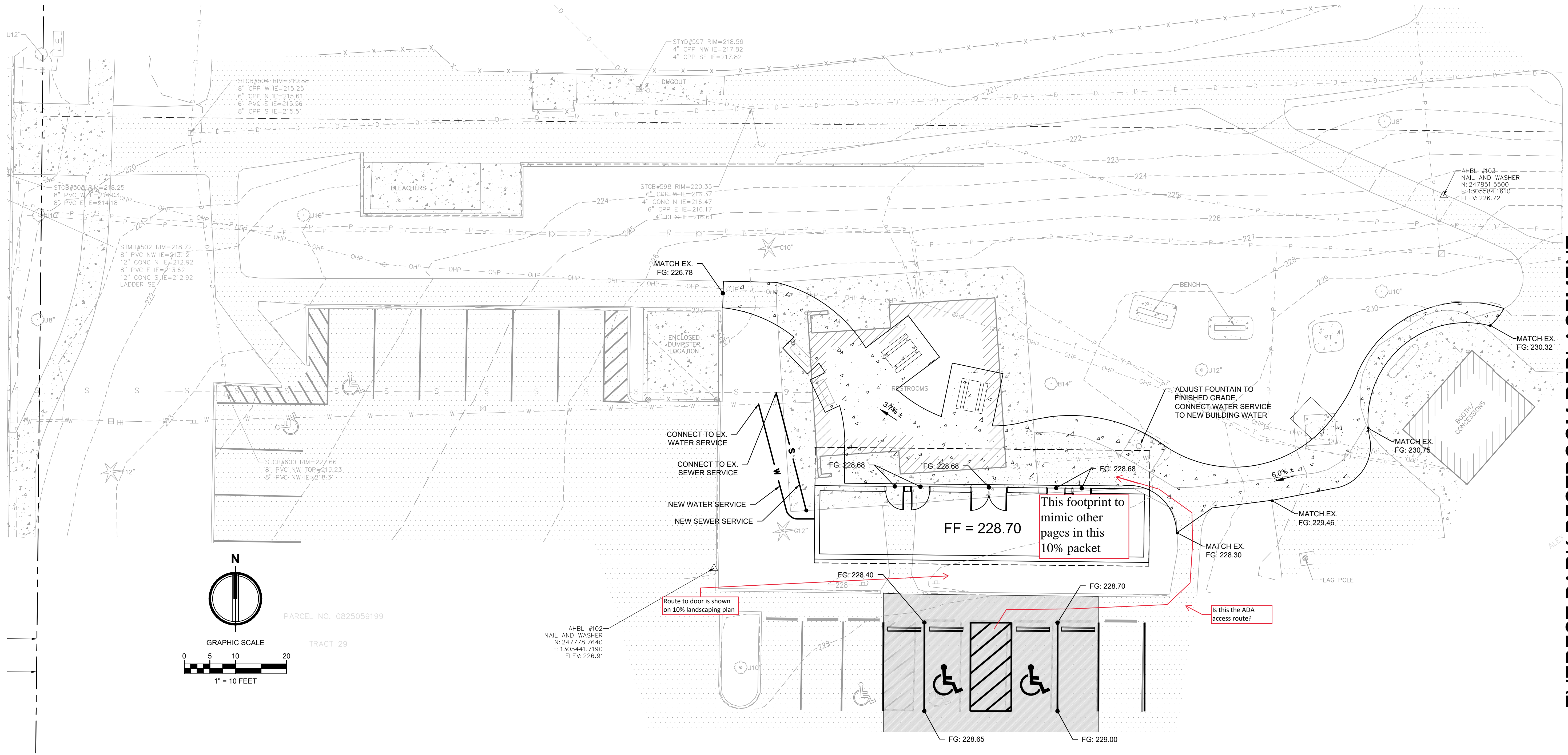
1" = 20 FEET

# 1 EVEREST PARK PLAN

1" = 20'-0"

EVEREST PARK RESTROOM REPLACEMENT  
 CONCEPT DESIGN - LANDSCAPE PLAN  
 03/25/2024


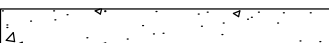
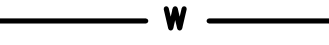

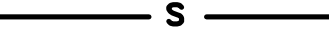
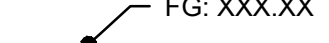




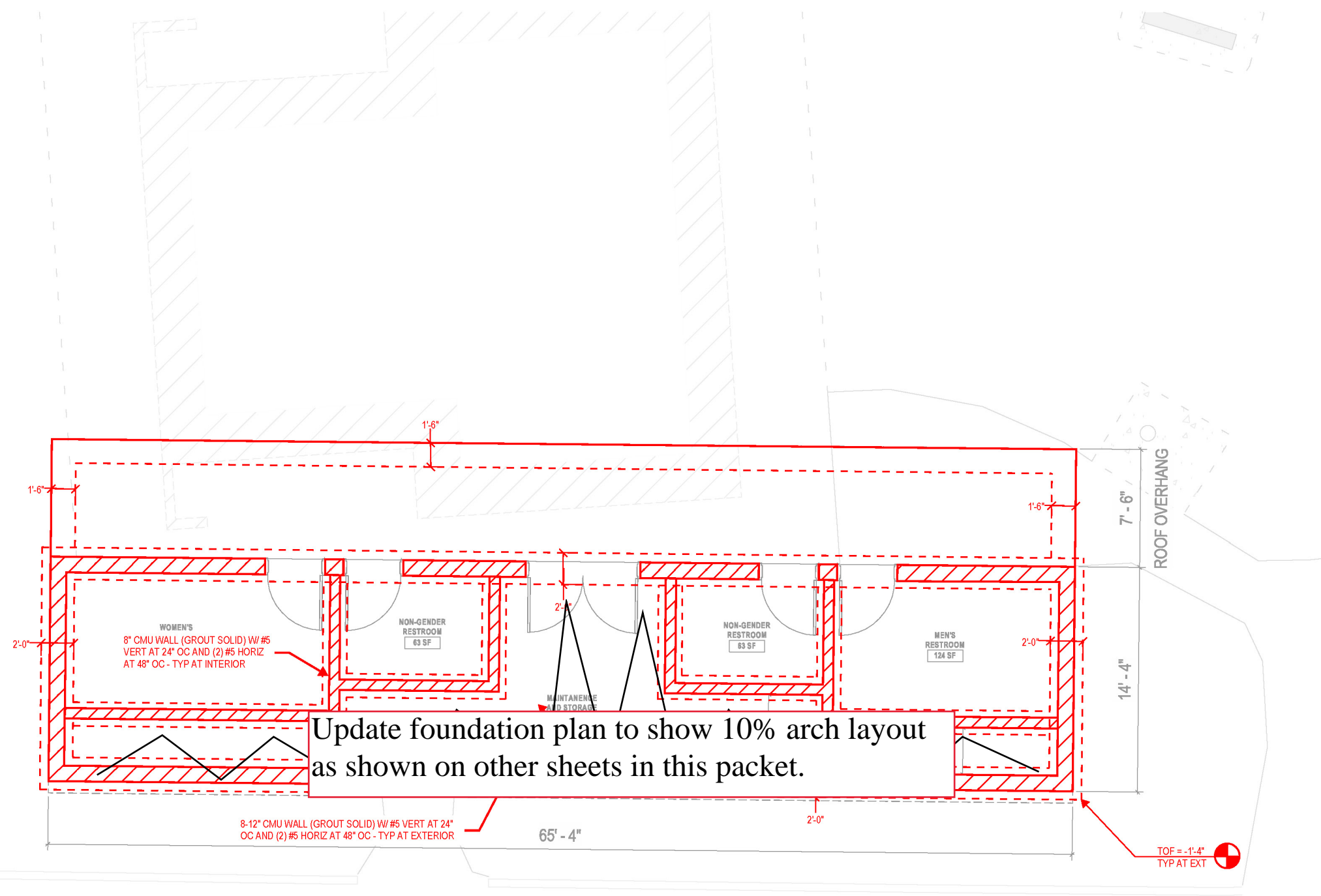
PARCEL NO. 0825059199  
TRACT 29

AHBL #102  
NAIL AND WASHER  
N: 247778.7640  
E: 1305441.7190  
ELEV: 226.91

**LEGEND:**

	ASPHALT PAVEMENT
	CEMENT CONCRETE
	WATER PIPING
	SANITARY SEWER CLEANOUT
	SANITARY SEWER PIPING
	SPOT ELEVATION

**EVEREST PARK RESTROOM REPLACEMENT**  
 CONCEPT DESIGN - CIVIL SITE PLAN  
 03/27/2024



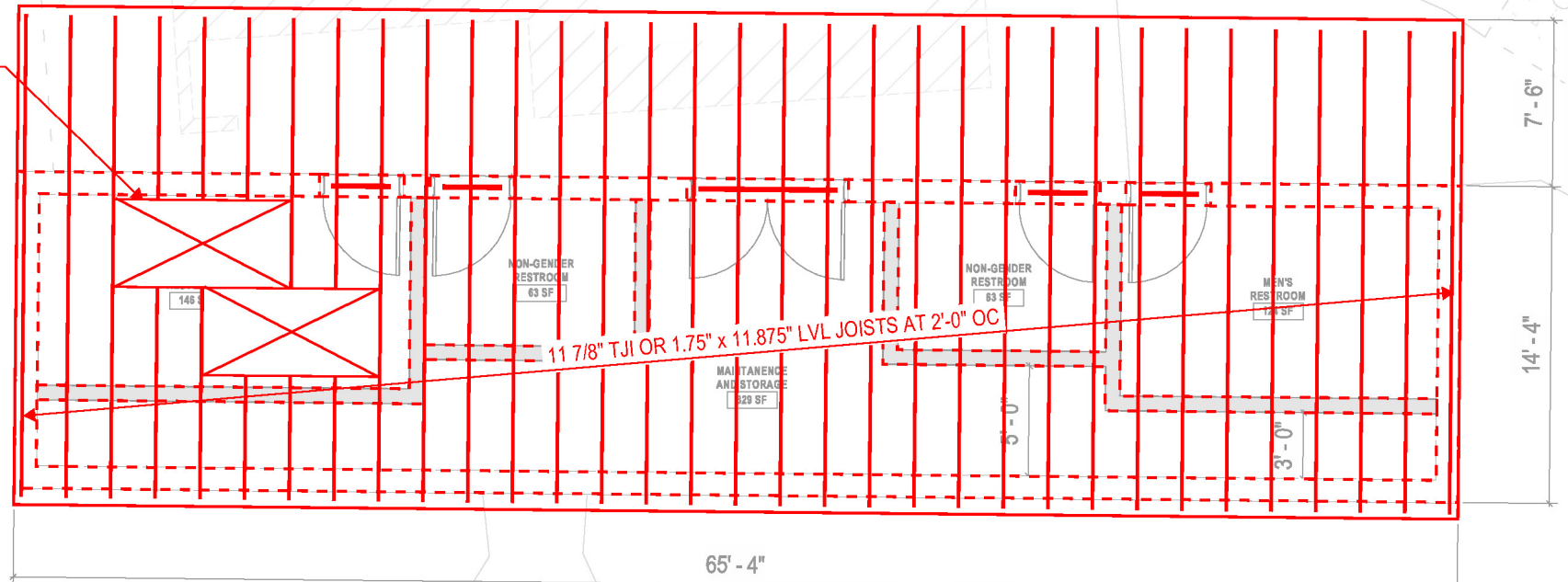
EVEREST PARK RESTROOM REPLACEMENT  
CONCEPT DESIGN - FLOOR PLAN - LEVEL 01  
03/13/2024

**1 FOUNDATION PLAN**  
1/8" = 1'-0"



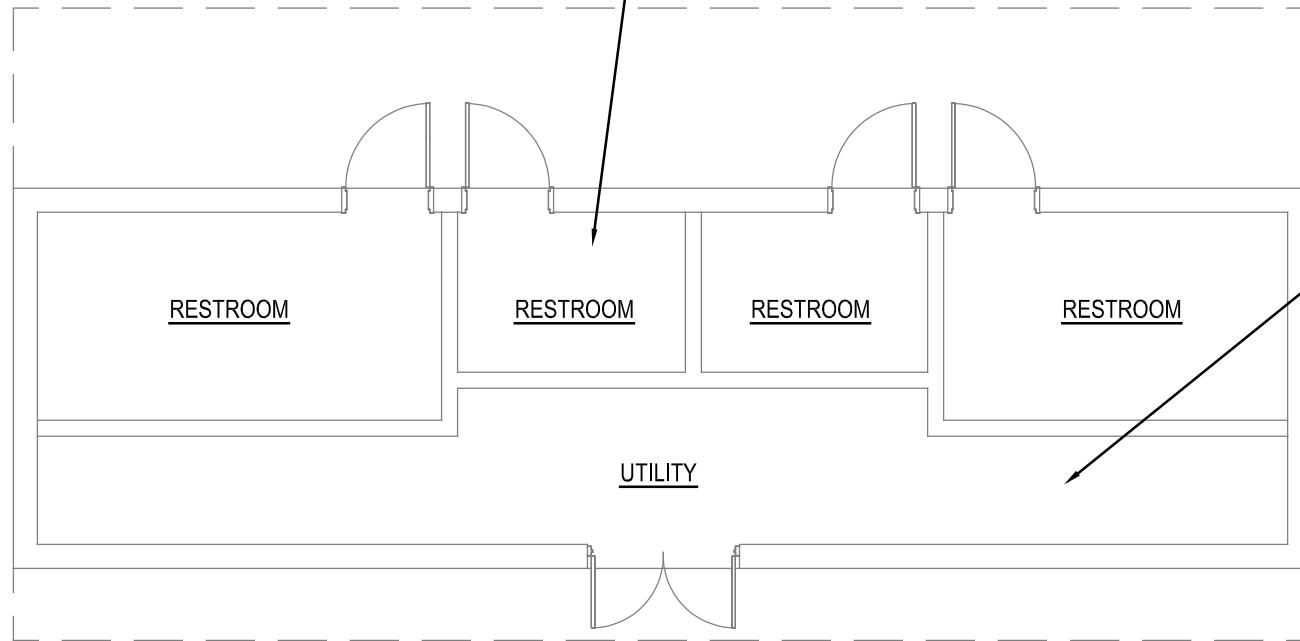
Update foundation plan below roof to show 10% arch layout as shown on other sheets in this packet (but doesn't really affect roof design except for dimensions).

19/32" APA RATED SHTG (UNBLOCKED T&G) - ORIENT LONG EDGE PERP TO SUPPORTS AND STAGGER JNTS AS SHOWN - NAIL W/ 10d COMMON AT 6" OC AT PNL EDGES AND 10d COMMON AT 10" OC AT PNL FIELD



**1** ROOF FRAMING PLAN  
 1/8" = 1'-0"

- TYPICAL RESTROOM  
HVAC:
- HEATING/VENTILATION PROVIDED BY ERV LOCATED IN UTILITY ROOM.
- PLUMBING:
- TRENCH DRAIN FOR SANITARY DRAINAGE.
  - WALL MOUNT TOILET, HEAVY DUTY STAINLESS CONSTRUCTION (ACORN OR SIMILAR), WITH PUSHBUTTON FLUSH ACTUATION, FLUSH VALVE LOCATED IN UTILITY ROOM.
  - WALL MOUNT LAVATORY, HEAVY DUTY STAINLESS CONSTRUCTION (ACORN OR SIMILAR), WITH TEMPERING VALVE (IN UTILITY ROOM) AND SENSOR-OPERATED FAUCET.
  - WALL MOUNT HOSE BIBB W/ QUICK COUPLER IN NON-LOCKING RECESSED WALL BOX.



- EXTERIOR PLUMBING:
- HOSE BIBB WITH QUICK COUPLER IN RECESSED WALL BOX.
  - DRINKING FOUNTAIN WITH BOTTLE FILLER AND PET WATER DISH.

- UTILITY ROOM HVAC:
- ENERGY RECOVERY VENTILATOR (ERV) & ELECTRIC DUCT HEATER LOCATED IN UTILITY AREA, DUCTED TO ALL RESTROOMS TO PROVIDE HEATING & FREEZE PROTECTION.
  - UTILITY ROOM EXHAUST PROVIDED BY ERV.
  - TIMER/CONTROL FOR ERV LOCATED IN UTILITY ROOM (OPTION - REMOTE ACCESS).
- PLUMBING:
- TANK TYPE ELECTRIC WATER HEATER WITH HOT WATER RECIRCULATION
  - FLOOR DRAIN FOR GENERAL DRAINAGE
  - FLOOR DRAIN W/ FUNNEL NEAR WATER HEATER & WATER HEADER ASSEMBLIES
  - WATER HEADER ASSEMBLY WITH BACKFLOW PREVENTER & WATER METER(S).
  - ALL PLUMBING FOR EACH RESTROOM LOCATED IN UTILITY ROOM.
  - HOSE BIBB W/ QUICK COUPLER.

**1** MECHANICAL & PLUMBING CONCEPT PLAN

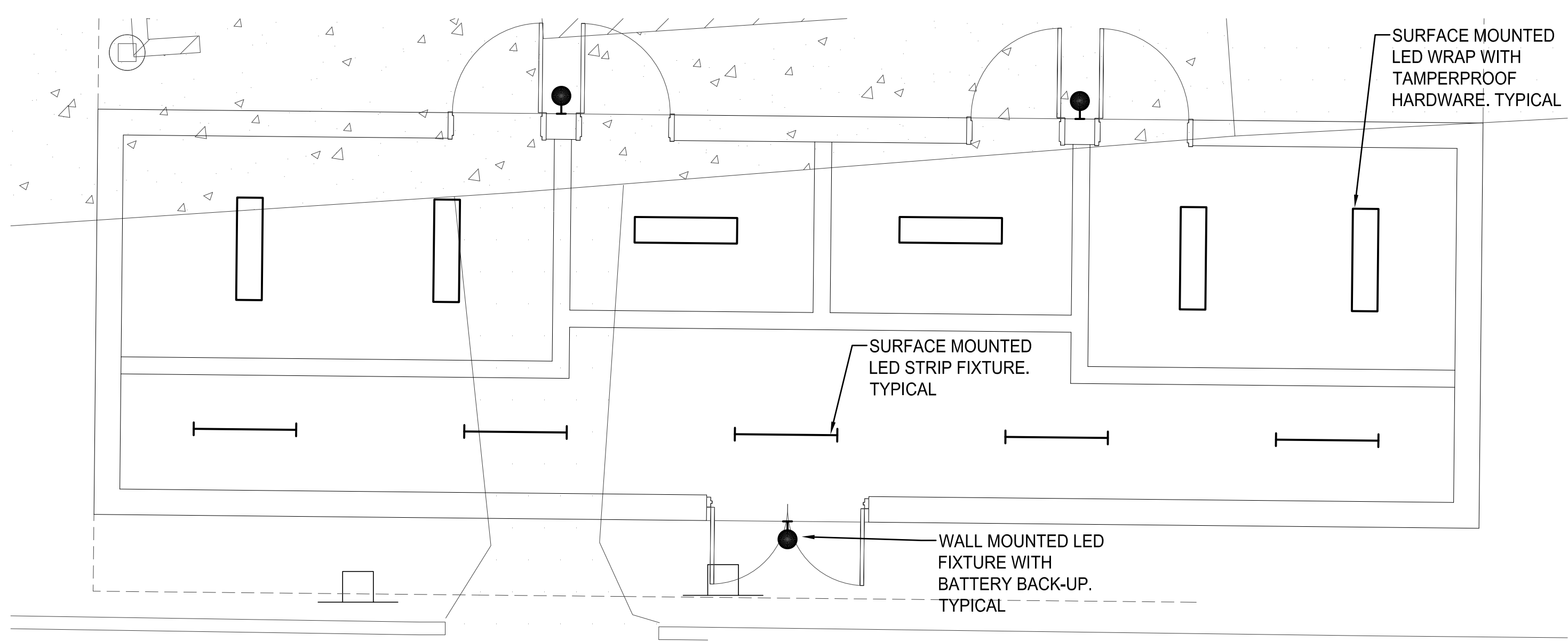
SCALE: 1/8"=1'-0"

**GENERAL NOTES:**

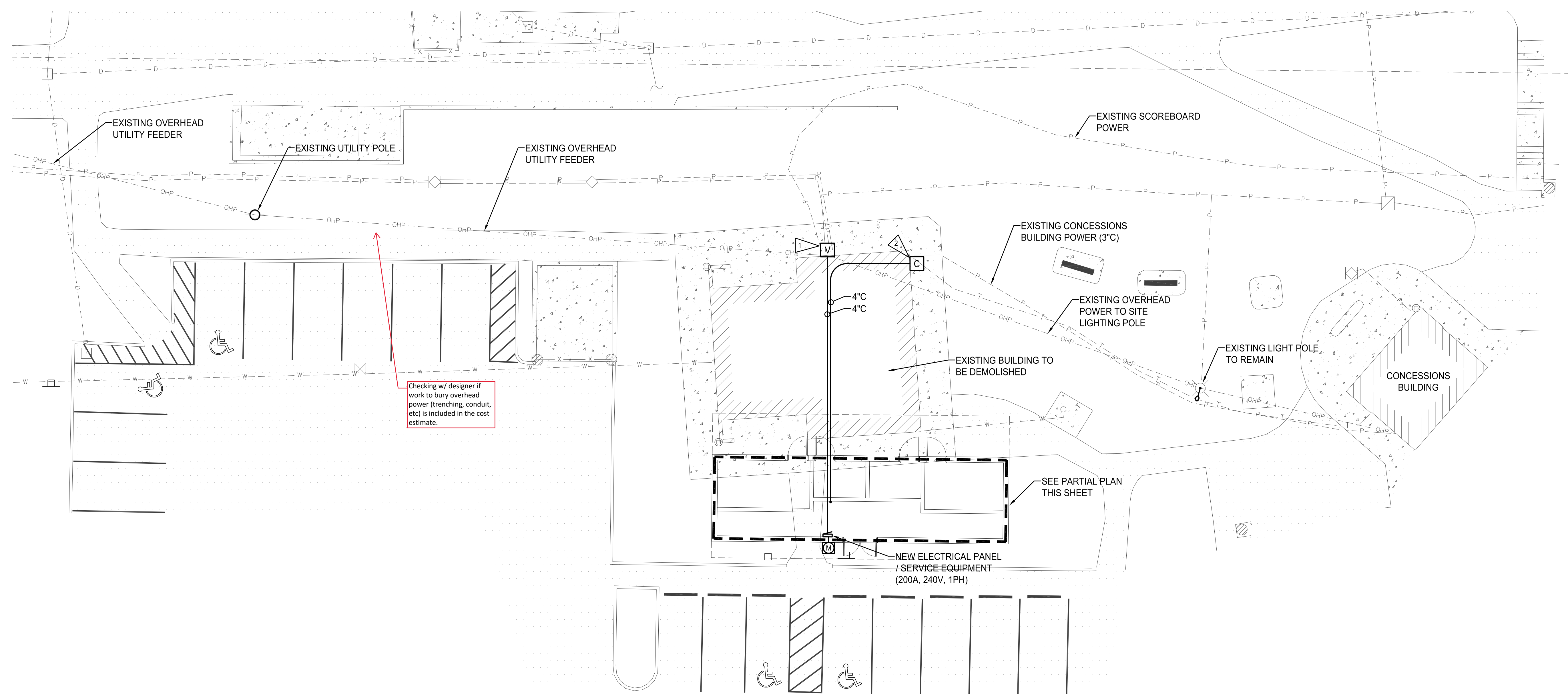
1. CONTRACTOR SHALL TAKE OUT AN ELECTRICAL PERMIT AND INSTALL ALL ELECTRICAL EQUIPMENT PER NATIONAL ELECTRICAL CODE AND LOCAL CODES.

**ELECTRICAL NOTES:**

1. CONTRACTOR SHALL PROVIDE NEW 3030LA VAULT, INTERCEPT EXISTING SITE ELECTRICAL CONNECTIONS AND EXTEND INTO NEW RESTROOM BUILDING ELECTRICAL PANEL.
2. CONTRACTOR SHALL PROVIDE NEW 25TA COMMUNICATIONS VAULT, INTERCEPT EXISTING SITE COMMUNICATIONS CONNECTIONS AND EXTEND INTO NEW RESTROOM BUILDING.



**PARTIAL ELECTRICAL PLAN**  
NOT TO SCALE



**EVEREST PARK RESTROOM REPLACEMENT**  
 PRELIMINARY ELECTRICAL SITE PLAN  
 03/22/2024

**ELECTRICAL SITE PLAN**  
NOT TO SCALE



# Everest Park

## Restroom Building Replacement

### Scope of Work

#### Project Scope Description

We understand that the project comprises cost planning for the Restroom Building Replacement: Everest Park located at 500 8th St S, Kirkland, WA 98033.

The intended design package consists of the replacement of an existing restroom building. The current structure has reached the end of its useful life and will require demolition and redevelopment in the same general location. The toilet capacity will be increased in the gendered restrooms to help with summer capacity needs at the park. The current footprint is ~1,100 SF and the original footprint/a slightly smaller footprint would be utilized for the new restroom. A maintenance chaseway with 40 SF of storage space for restroom supplies will be incorporated into the design.

#### Project Design

This report is based on the following documentation:

- 2024-03-20 Everest Park Restroom\_site concepts\_v1\_markup
- 24\_0313 Concept Design Plan
- Kirkland Everest Restroom - Struct Dwg - 10% Concept Design
- 24-012 - E10
- Kirkland Everest Restroom - Structural Building Narrative - 10% Concept

# Everest Park Restroom Building Replacement

## Basis of Estimate

### Assumptions and Clarifications

The estimate is based on the drawings listed in the scope of work and conversations with the Architects and Engineers.

Standard working hours.

Prevailing wages apply.

Owner's soft costs are not included.

Escalation is included to Q1 2025.

Remediation, if any, is not included.

Everest Park  
Restroom Building Replacement

Overall Summary

	SF		TOTAL
Restroom	940	994.70	935,018
Sitework	7,275	43.76	318,320
<b>TOTAL CONSTRUCTION COST</b>			<b>1,253,337</b>

Typical 20% variance to this number when in 10% & 30% design phases.

\$990,000 - Soft Costs (design, permitting, inhouse, inspection)

\$1,504,000 - for Construction Estimate @ 10% Design

\$300,000 - 20% Construction Contingency

**\$2,800,000 - Total Estimate at 10% Design**

**From:** [Jeff Rotter](#)  
**To:** [Rachel](#); [Park Board](#)  
**Cc:** [Lynn Zwaagstra](#); [Jason Filan](#)  
**Subject:** RE: Juanita courts  
**Date:** Friday, May 3, 2024 3:47:08 PM

---

Hi Rachel,

Thank you for taking the time to provide feedback about our sand volleyball courts. They certainly are busy at times, but it's nice to hear people were willing to work together to allow everyone a chance to play. We're fortunate to have quality courts in two fantastic locations. We'll put another check in the box supporting more sand courts in our park system and I'll be sure to pass along your input.

Take care and have a great weekend!

[Jeff Rotter](#) | Park Maintenance Supervisor | [City of Kirkland](#)  
desk: (425) 587-3343 | email: [jrotter@kirklandwa.gov](mailto:jrotter@kirklandwa.gov)  
12006 120<sup>th</sup> PL NE, Kirkland WA 98034

---

**From:** Rachel <[rachellynnhart@gmail.com](mailto:rachellynnhart@gmail.com)>  
**Sent:** Thursday, May 2, 2024 7:34 PM  
**To:** Park Board <[parkboard2@kirklandwa.gov](mailto:parkboard2@kirklandwa.gov)>  
**Subject:** Juanita courts

Hello,

I stopped by Juanita beach to play volleyball this afternoon and there was quite a crowd!! Several people left after showing up and we got creative in finding ways for everyone to play but it would be sure nice to have a few more courts built! Im sure you get plenty of requests already but just thought to mention and share a photo from today of the fun!

Appreciate all your help making the city parks a place for the community to gather and enjoy time outside.

Best wishes,  
Rachel Aspuria



Sent from my iPhone

**From:** [Philip Behrend](#)  
**To:** [Jeff Rotter](#)  
**Cc:** [Park Board](#); [Lynn Zwaagstra](#)  
**Subject:** Re: Juanita volleyball courts  
**Date:** Tuesday, May 7, 2024 2:54:14 PM

---

That's fantastic news, thanks Jeff. I'll plan to volunteer to help with the improvements.

Philip

On Tue, May 7, 2024, 2:46 PM Jeff Rotter <[JRotter@kirklandwa.gov](mailto:JRotter@kirklandwa.gov)> wrote:

Hi Philip,

Thank you for taking time to provide feedback about our sand volleyball courts at Juanita Beach. We've been discussing some possible improvements and changing the direction of the courts is one of them. We plan to involve the volleyball community in the project by way of volunteer opportunities organized through our volunteer Parks Beatification Program, so stay tuned.

Feel free to contact me directly with questions or concerns related to our sand volleyball courts.

Take care,

Jeff Rotter | Park Maintenance Supervisor | [City of Kirkland](#)

desk: (425) 587-3343 | email: [jrotter@kirklandwa.gov](mailto:jrotter@kirklandwa.gov)

12006 120<sup>th</sup> PL NE, Kirkland WA 98034

---

**From:** Philip Behrend <[behrendphilip@gmail.com](mailto:behrendphilip@gmail.com)>  
**Sent:** Saturday, May 4, 2024 5:23 PM  
**To:** Park Board <[parkboard2@kirklandwa.gov](mailto:parkboard2@kirklandwa.gov)>  
**Subject:** Juanita volleyball courts

**CAUTION/EXTERNAL:** This email originated from outside the City Of Kirkland. Do not click links or open attachments unless you recognize the sender and know the

content is safe.

Good afternoon,

Sending a suggestion for the Juanita volleyball courts, could they please be rotated 90 degrees? During morning and evening hours (peak volleyball time), the sun is directly in the face of one team. Reorientation would significantly improve the playing experience.

Thanks!

Philip

**From:** [Jeff Rotter](#)  
**To:** [Chris Hui](#); [Park Board](#)  
**Cc:** [Lynn Zwaagstra](#)  
**Subject:** RE: Beach volleyball courts  
**Date:** Tuesday, May 7, 2024 3:12:59 PM

---

Hi Chris,

Thank you for taking time to provide feedback about our sand volleyball courts. We're fortunate to have quality courts in two fantastic locations. We'll put another check in the box supporting more sand courts in our park system and I'll be sure to pass along your input.

Feel free to contact me directly with questions or concerns about our existing courts.

Take care,

Jeff Rotter | Park Maintenance Supervisor | City of Kirkland  
desk: (425) 587-3343 | email: [jrotter@kirklandwa.gov](mailto:jrotter@kirklandwa.gov)  
12006 120th PL NE, Kirkland WA 98034

-----Original Message-----

From: Chris Hui <[chipsahui@hotmail.com](mailto:chipsahui@hotmail.com)>  
Sent: Sunday, May 5, 2024 8:17 PM  
To: Park Board <[parkboard2@kirklandwa.gov](mailto:parkboard2@kirklandwa.gov)>  
Subject: Beach volleyball courts

CAUTION/EXTERNAL: This email originated from outside the City Of Kirkland. Do not click links or open attachments unless you recognize the sender and know the content is safe.

To whom it may concern,

I live across the street from Juanita beach park and I play volleyball there every chance I get. On nice days, the courts are so busy, I get there after work and wait 3 hours before I get to play and by the time it's my turn it's already dark. This happens a lot and the volleyball community is only growing bigger and bigger! Some solutions can either be increase the amount of courts in the area or even adding lights to these courts like the pickle ball and tennis courts! I have a lot more to say but these are my main concerns that could help with the increasing popularity of beach volleyball! Thanks for taking the time to read this email and hope that you would consider any of my opinions!

Thanks,  
Chris Hui



**From:** [Jennifer Loy](#)  
**To:** [Lynn Zwaagstra](#); [Council](#)  
**Cc:** [Kurt Triplett](#); [James Lopez](#); [Park Board](#)  
**Subject:** Carillon Woods/Parks Comp Plan Reply  
**Date:** Thursday, May 16, 2024 11:37:21 AM  
**Attachments:** [image001.png](#)  
[image003.png](#)

---

**CAUTION/EXTERNAL:** This email originated from outside the City Of Kirkland. Do not click links or open attachments unless you recognize the sender and know the content is safe.

Lynn,

I'm sorry we haven't had the opportunity to speak on the phone or meet in person in response to my May 7<sup>th</sup> testimony and park volunteerism.

Rather than reply fully to your email point by point at this time, I will take you up on your offer to provide me more information on specific questions. I can't find what I'm looking for in the PROS plan. I've also been told these documents, and this data doesn't exist. I hope that is not the case.

1. Is there or has there ever been a Park Plan for care and maintenance of Carillon Woods that was active in 2022? May I have a copy.
2. May I have a documented list with descriptions of the way City of Kirkland categorizes different parks and a list of where each city of Kirkland park falls within each category?
3. May I have a written description of the different standards or levels of service assigned to each category of park with respect to vegetation management that was active in 2022? Where is the written definition of a "natural" park maintenance approach and what are the other approaches with definitions of methods and expectations of service?
4. May I have a list of all other Kirkland Parks that were being serviced and categorized the same way Carillon Woods Park Playground has been serviced for vegetation maintenance in 2022 and prior?

Because the care and maintenance of vegetation at Carillon Woods dramatically changed over the last 5 years, please highlight when a decision was made to implement the natural strategy in effect in 2022.

Respectfully,  
Jennifer Loy

---

**From:** Lynn Zwaagstra <LZwaagstra@kirklandwa.gov>  
**Sent:** Wednesday, May 15, 2024 4:30 PM  
**To:** Jennifer\_Loy@hotmail.com; Council <Council@kirklandwa.gov>  
**Cc:** Kurt Triplett <KTriplett@kirklandwa.gov>; James Lopez <JLopez@kirklandwa.gov>

**Subject:** Carillon Woods/Parks Comp Plan Reply

Hello Jennifer,

City Council has received your public comment and corresponding email below pertaining to Carillon Woods and I have been assigned to respond on their behalf.

Your concerns about the maintenance of Carillon Woods has been noted. There have been numerous meetings on site between you and parks staff, department leadership, Park Board members and City Councilmembers where your concerns were also noted. We understand your desire for a higher level of maintenance at the park. I've reviewed the list of projects parks staff have completed to improve the park and to change some of its vegetation management practices. The park has also received an upgraded level of service and now receives 5 visits per week; although, notably, many of those visits are focused on cleanliness and safety. I appreciate the park improvements and support the steps taken by staff. However, we are not able to increase the level of service beyond these actions.

City Council and staff have also heard your request for a policy change to upgrade the park maintenance level to that of a neighborhood park level. As you indicated, a portion of Carillon Woods is developed (playground area) and the remainder of the park is natural. This is the case with many of our parks. The level of development and amenities at each park is a primary driver of the maintenance level; although we do have a "standard" for different park types. Carillon Woods has very limited amenities and is intended to look and feel like a natural park; if you will, it's an urban forest and is loved as such by the community. To increase the level of service, we would need to increase the development and amenities at the park and, in fact, we would need to increase the level of service beyond our typical standard for a neighborhood park as it is not common to plant annuals, maintain a weed free environment, and have a more manicured look in a neighborhood park. This is related to the many community conversations that occurred over the years as it pertains to herbicide use, a tolerance for weeds, vegetation management, and the use of native plants and pollinators versus annual plants. These factors are a matter of policy as well as a balance of City resources required. The City has been very purposeful in improving its sustainability practices both for parks and for general public space like sidewalks and rights of way while also taking care to be a good steward of public assets and dollars.

You are certainly welcome to make the requests you've made. You've also brought your request forward at an opportune time given the current comprehensive plan process. City Council have received your feedback, as has the Planning and Building Department planners who are working on the comprehensive plan. Should policy makers wish to change course on level of service standards and vegetation management, it will be incorporated into draft

documents currently going through the public hearing process.

Thank you for engaging in the public comment process and bringing forward your interests and concerns. Please let me know if you have any specific questions.

**Lynn Zwaagstra (swag-stra), Director** (*pronouns: she/her/hers*)

City of Kirkland – [Parks and Community Services](#)

123 Fifth Ave, Kirkland WA 98033 | (425) 587- 3300

[Our Kirkland: report Non-Emergency Issues, Request Services and Ask Questions](#)

**From:** Jennifer Loy <[Jennifer\\_Loy@hotmail.com](mailto:Jennifer_Loy@hotmail.com)>

**Sent:** Wednesday, May 8, 2024 5:36 PM

**To:** Kurt Triplett <[KTriplett@kirklandwa.gov](mailto:KTriplett@kirklandwa.gov)>; City Council <[CityCouncil@kirklandwa.gov](mailto:CityCouncil@kirklandwa.gov)>; James Lopez <[jlopez@kirklandwa.gov](mailto:jlopez@kirklandwa.gov)>; Lynn Zwaagstra <[lzwaagstra@kirklandwa.gov](mailto:lzwaagstra@kirklandwa.gov)>

**Cc:** Kathi Anderson <[kanderson@kirklandwa.gov](mailto:kanderson@kirklandwa.gov)>

**Subject:** Carillon Woods/Parks Comp Plan

Good afternoon and thank you for the opportunity to address the council and city staff last night.

I'm following up by summarizing a few points from my remarks.

Please note: I've become active with Carillon Woods park in November of 2022, becoming an official parks volunteer complete with criminal background check early in 2023. I've spent countless hours discussing the situation with Jodie Galvin, John Lloyd and now Jason Filan. I've also spent an enormous amount of my personal time actively weeding, pruning and even ran a volunteer clean up event at Carillon Woods that had a picture featured in one of the Kirkland Magazines. There was a flash point this December where I reached out to Kathy Kearny and Amy Ambrosini, current Parks Board members, Deputy City Manager Lopez and Councilman, John Tymczyszyn.

**Under the current parks maintenance policy and classification, the park became visibly derelict, unkept, secluded and was widely believed to feel unsafe for residents of all ages.** This state developed over several years. All the while, two blue, plastic signs were prominently posted that "This area is serviced by the City of Kirkland Green Team/Partnership" or something close to that.

I've lived in the neighborhood as long as this park has existed, and it used to be maintained very

well. After calling the city, I was strongly recruited to become a Green Partnership member but, decided I would reluctantly become an official parks volunteer just for Carillon Woods if that's what it would take to get the park back to a good place. I stated at the time I was solely focused on the **playground area, restoring it to look cared for, welcoming and safe.**

In all of my interactions with staff, I've been told this is how we maintain a "natural park." My attempts and reasoning that the playground area needed a different set of standards were met with bewilderment and resistance. Can we delineate and maintain the playground area differently from the forest area?

Over time, I came to the conclusion that these employees are doing their job as designed by city policy today. *They ARE dutifully following the current city park maintenance policy for a natural park or area.* If nothing changes and I don't continue to dialog with parks, ask for service, updates or just do the work myself, the park will fall back into disrepair because that is the **current city parks maintenance policy.**

"Natural" is neglected. Overgrown bushes are "natural", weeds everywhere are "natural," seclusion so you can no longer see there is a play structure from the street is "natural" leaving any trimmings & branches all over the park on the ground is "natural."

After all the above, I could no longer not bring this up to the Council when it came time to look at the parks comprehensive plan. I had every hope of working with staff to get to a good place where I felt there was a plan and expectation that was reasonable and would be adhered to overtime without any or much resident engagement. That is not the case today.

As such, I ask Council and the City Manager to reevaluate the natural=neglected policy for Carillon Woods and other parks with playgrounds. **Please rededicate the direction of the parks department to emphasize maintaining the parks already in the portfolio via the comprehensive plan update and the PROS plan when that time comes.**

Carillon Woods needs to be split and recategorized. The playground area needs to have a level of service just like other neighborhood park with a playground, the rest of the woods can be serviced like Watershed Park.

I think the measurement of productivity needs to be something other than hours logged. The current system gives credit to a park for service when a parks employee drives to the park even if they don't do anything other than drive there. There is no direct expectation they do any maintenance on a daily, weekly or monthly basis as it's been explained to me.

Last night, I gave the example of investigating the hours logged at Carillon Woods through the monthly reports in the two years prior to the pictures I took in November of 2022. Both years

over 200 hours were logged at Carillon Woods park. That is about 25, 8-hour days. The results of the current, system, expectations and natural policy are memorialized in the pictures below.

Thank you for your consideration and for your stewardship of Kirkland. There is a lot more detail than this. I'm happy to speak with any of you on the phone or in person.

Kind Regards,  
Jennifer Loy  
Houghton  
206 617 5555

**From:** [Lynn Zwaagstra](#)  
**To:** [Park Board](#); [John Lloyd](#)  
**Subject:** RE: lack of ADA parking at Juanita Beach Fields, and the response received on OurKirkland  
**Date:** Tuesday, April 30, 2024 11:25:43 AM  
**Attachments:** [image001.png](#)  
[image003.png](#)

---

Hello Park Board,

Just a reminder not to reply to this email. Mr. Mical will receive a response from us and we will update you at the next Park Board meeting.

However, I don't want you to go 3 weeks without hearing any information, so preliminarily I will say that there are standards for putting up an [ADA parking](#) sign. Any such signage can only be installed if the location meets ADA standards. Making Juanita Beach Park north accessible is a high priority and has been identified in our ADA Assessment and Transition Plan and our CIP. My response to Mr. Mical was about meeting ADA standards, not about putting up a sign. We've been trying to get funding for some time and will continue to seek all available sources.

**Lynn Zwaagstra (swag-stra), Director** (*pronouns: she/her/hers*)

City of Kirkland – [Parks and Community Services](#)

123 Fifth Ave, Kirkland WA 98033 | (425) 587- 3300

[Our Kirkland](#): *report Non-Emergency Issues, Request Services and Ask Questions*

---

**From:** Jason Mical <jmical@gmail.com>

**Sent:** Monday, April 29, 2024 12:29 PM

**To:** Park Board <parkboard@kirklandwa.gov>; John Lloyd <jlloyd@kirklandwa.gov>

**Subject:** lack of ADA parking at Juanita Beach Fields, and the response received on OurKirkland

**CAUTION/EXTERNAL:** This email originated from outside the City Of Kirkland. Do not click links or open attachments unless you recognize the sender and know the content is safe.

Dear Kirkland Park Board Members,

My name is Jason Mical. I'm a Kirkland resident who has lived in my home since 2005 in the Juanita area. I have a disability that makes walking long distances, especially carrying heavy things, very difficult and painful.

My two sons both participate in Kirkland National Little League, and their games are played exclusively at Juanita Beach Park. Unfortunately there is no ADA parking near the baseball fields

there (although there is an ADA port-a-potty.) On busy days, especially when it is sunny and warm, the nearest parking is typically across Juanita Drive in the Juanita Beach Park lot, which means that I need to carry baseball gear and a chair (because the provided metal benches are incredibly painful for me to sit on for any length of time) across the street, lot, and sometimes to the far field.

I called City Hall and was told to raise this issue with the Our Kirkland system, which I did here: <https://kirklandwa.qscend.com/ourkirkland/request/view/45dc8f8f66df4f74b6fd7292c9a608a2> I eventually received a response from Lynn Zwaagstra, who told me that ADA parking was “a priority” but that capital infrastructure repair was “taxing our resources,” and that the Parks department was “applying for grants.”

I admit Lynn’s response was incredibly frustrating. I did a little research, and a Washington State ADA parking sign is \$75 online: <https://www.adasigndepot.com/products/washington-handicapped-parking-signs>. Additionally, being a handy and civic-minded person, I could easily find a friend and install such a sign myself, for free—although an hour’s worth of labor wouldn’t cost more than \$100. So installing two signs and an hour’s worth of labor would run \$250, tops. I can’t imagine that such an expense would require a “grant.” All it would require is a tiny output of money and caring enough about people with disabilities.

I’m tired of sitting through my kids’ games in pain because of the lack of ADA parking at Juanita Beach baseball field. It’s not only unfair, it’s against Title II of the Americans with Disabilities Act: <https://www.ada.gov/law-and-regs/regulations/title-ii-2010-regulations/>

Lynn’s callous and unfeeling response to my ticket made me feel invisible, unheard, and completely disregarded by the government of the city I love and call home. There was zero empathy for the pain and inconvenience disabled people experience, and Lynn’s excuse about needing grants seemed incredibly disingenuous, especially when Kirkland just funded a \$22 million dollar pedestrian bridge but needs a \$250 “grant” to make disabled people’s lives a little easier.

I would like very much to discuss ways we can make this better—and make it right. You can reach me at this email, or at 425.985.8885.

Thank you for your time,

- Jason Mical -

**From:** [Jeff Rotter](#)  
**To:** [miner.50@outlook.com](mailto:miner.50@outlook.com)  
**Cc:** [John Lloyd](#)  
**Subject:** RE: Juanita sand courts  
**Date:** Tuesday, May 14, 2024 12:31:00 PM

---

Hi Jon,

Thank you for taking time to provide feedback about our sand volleyball courts at Juanita Beach. The community is fortunate to have quality courts in two fantastic locations. We'll put another check in the box supporting more sand courts in our park system and I'll be sure to pass along your input. We've been discussing some possible improvements to the Juanita Beach courts and changing the direction of the courts is one of them. We plan to involve the volleyball community in the project by way of volunteer opportunities organized through our volunteer Parks Beatification Program, so stay tuned.

Feel free to contact me directly with questions or concerns related to our sand volleyball courts.

Take care,

Jeff Rotter | Park Maintenance Supervisor | [City of Kirkland](#)  
desk: (425) 587-3343 | email: [jrotter@kirklandwa.gov](mailto:jrotter@kirklandwa.gov)  
12006 120<sup>th</sup> PL NE, Kirkland WA 98034

---

**From:** Jon Miner <[miner.50@outlook.com](mailto:miner.50@outlook.com)>  
**Sent:** Monday, May 13, 2024 10:14 AM  
**To:** Park Board <[Parkboard@kirklandwa.gov](mailto:Parkboard@kirklandwa.gov)>  
**Subject:** Juanita sand courts

**CAUTION/EXTERNAL:** This email originated from outside the City Of Kirkland. Do not click links or open attachments unless you recognize the sender and know the content is safe.

I love going to Juanita Park to play volleyball and engage in community events. It's an amazing resource for the community. I think the courts would really benefit from 1 additional court and also a change in orientation from east to west to north to south. Thanks for the consideration for my requests.



## John Lloyd

---

**From:** Jeff Rotter  
**Sent:** Tuesday, May 7, 2024 3:17 PM  
**To:** jnguyen206@gmail.com; Park Board  
**Cc:** Lynn Zwaagstra  
**Subject:** RE: Please build more sand volleyball courts

Hi Jeremy,

Thank you for taking time to provide feedback about our sand volleyball courts. We're fortunate to have quality courts in two fantastic locations. We'll put another check in the box supporting more sand courts in our park system and I'll be sure to pass along your input.

Feel free to contact me directly with questions or concerns about our existing courts.

Take care,

Jeff Rotter | Park Maintenance Supervisor | [City of Kirkland](#)  
desk: (425) 587-3343 | email: [jrotter@kirklandwa.gov](mailto:jrotter@kirklandwa.gov)  
12006 120th PL NE, Kirkland WA 98034

---

**From:** Jeremy Nguyen <[jnguyen206@gmail.com](mailto:jnguyen206@gmail.com)>  
**Sent:** Friday, May 3, 2024 5:56 PM  
**To:** Park Board <[parkboard@kirklandwa.gov](mailto:parkboard@kirklandwa.gov)>  
**Subject:** Please build more sand volleyball courts

**CAUTION/EXTERNAL:** This email originated from outside the City Of Kirkland. Do not click links or open attachments unless you recognize the sender and know the content is safe.

Hello, I'm at Juanita beach park today on May 3rd and there are over 30 people wanting to play in the sand volleyball courts. Yesterday there was the same amount of people. I think it would be great for the city and the growing volleyball community if we could build more sand courts across the street from Juanita beach park.

Thanks, Jeremy Nguyen



**From:** [Joohee Tse](#)  
**To:** [Jeff Rotter](#)  
**Cc:** [Jason Filan](#); [Lynn Zwaagstra](#); [Park Board](#)  
**Subject:** Re: Juanita Beach Volleyball Courts  
**Date:** Sunday, May 5, 2024 5:55:39 PM

---

This is amazing news, Jeff!! Thank you so much!

I'm confident many players from our volleyball community would love to volunteer for all of the projects you mentioned! Please let me know if I can assist in any way!

Our community is growing exponentially as beach volleyball gets more and more popular, and having better and more courts would really help get everyone out there and allow everyone more opportunities to play!

Thank you for taking the time to respond back to me! I really appreciate it!

Sincerely,  
Joohee

On Fri, May 3, 2024 at 4:20 PM Jeff Rotter <[JRotter@kirklandwa.gov](mailto:JRotter@kirklandwa.gov)> wrote:

Hi Joohee,

Thank you for taking time to provide feedback about our sand volleyball courts. We'll put another check in the box supporting more sand courts in our park system and I'll be sure to pass along your input.

We have a part time staff person that plays a lot of sand volleyball who's responsible for tilling the courts as needed. I'll check in with him to make sure he has everything he needs and confirm the current tilling schedule. I was told today the showers and water supply near the courts would be activated next week. We're also open to the concept of changing the direction of the courts, which is something others have commented on as well. We're currently working on a plan to improve sand quality and drainage, which would be a perfect time to reorient the courts. We plan to involve the volleyball community in the project by way of volunteer opportunities organized through our volunteer Parks Beatification Program, so stay tuned for that.

Feel free to contact me directly with questions or concerns related to our sand volleyball courts.

Take care and have a great weekend!

Jeff Rotter | Park Maintenance Supervisor | [City of Kirkland](#)

desk: (425) 587-3343 | email: [jrotter@kirklandwa.gov](mailto:jrotter@kirklandwa.gov)

12006 120<sup>th</sup> PL NE, Kirkland WA 98034

---

**From:** Joohee Tse <[jchai81@gmail.com](mailto:jchai81@gmail.com)>  
**Sent:** Thursday, May 2, 2024 5:45 PM  
**To:** Park Board <[parkboard2@kirklandwa.gov](mailto:parkboard2@kirklandwa.gov)>  
**Subject:** Juanita Beach Volleyball Courts

**CAUTION/EXTERNAL:** This email originated from outside the City Of Kirkland. Do not click links or open attachments unless you recognize the sender and know the content is safe.

Hello!

I am a resident of Kirkland and LOVE playing volleyball at Juanita beach but it's getting so busy and we feel like the city would benefit from more courts.

A couple of other requests for the safety and enjoyment of the players would be to:

- roto-till the courts because it gets packed and the players get bloody scrapes.
- re-orient the courts so we're not staring at the sun during peak times.
- turn the showers on.
- turn the hose water on to spray the sand to keep the dust and heat down.

Thank you for your time and consideration! The volleyball community is grateful for the existing courts even as we ask for more!!! Thank you!

Sincerely,

Joohee