

# KIRKLAND PARKS & COMMUNITY SERVICES – APRIL 2024



Parks and Community Services was recently awarded a grant from King County Wastewater Treatment Division's WaterWorks program to help stream neighbors improve the health of Juanita Creek, Kirkland's largest salmon bearing stream. Over the years urbanization and the loss of native vegetation, have resulted in concerns about water quality, erosion along the stream banks, and dwindling salmon runs in Juanita Creek.



The WaterWorks grant funding will be used by the City to partner with the Adopt A Stream Foundation and the Washington Conservation Corps to help stream neighbors improve the health of Juanita Creek. The department has been working to restore native vegetation in parks and City-owned land along Juanita Creek with previous WaterWorks grant funding. However, approximately two-thirds of the land along Juanita Creek is privately owned.

City staff and Adopt A Stream Foundation ecologists will engage with property owners along Juanita Creek near Windsor Vista Park and Edith Moulton Park. Together, they will identify and recommend steps to improve the health of Juanita Creek in their backyards. A limited number of landscaping projects will be selected for implementation by the Washington Conservation Corps crews at no or little cost. Landscaping projects could include something as simple as planting a few native trees and shrubs to more ambitious projects like converting lawns to native landscapes or connecting roof downspouts to rain barrels or cisterns.

Kirkland takes pride in preserving our streams and creeks to promote a healthier watershed for the benefit of all community members. We are grateful to King County for this grant to support our ongoing efforts to protect Kirkland's natural environment.

Kirkland residents who do not live along Juanita Creek near Windsor Vista Park or Edith Moulton Park may still qualify for up to \$5,000 in rebates for installing native landscaping or rain gardens through the City's Yard Smart Rain Rewards program. Learn more about the Yard Smart Rain Rewards program at [KIRKLANDWA.GOV/YARDSMART](http://KIRKLANDWA.GOV/YARDSMART). Learn more about the health of creeks and watersheds in Kirkland visit [WWW.KIRKLANDWA.GOV/KIRKLANDWATERSHEDS](http://WWW.KIRKLANDWA.GOV/KIRKLANDWATERSHEDS).

For more information about Kirkland's efforts to restore natural areas in parks, visit [WWW.GREENKIRKLAND.ORG](http://WWW.GREENKIRKLAND.ORG). For more information about the Adopt A Stream Foundation, visit [WWW.STREAMKEEPER.ORG](http://WWW.STREAMKEEPER.ORG).



## ADMINISTRATION

### HOUGHTON PARK AND RIDE ACTIVATION

City Council directed staff to proceed with the temporary improvements of the former Houghton Park and Ride while long-term uses are evaluated. The temporary improvements include pickleball courts, community gardens, a modular skate park, a modular pump track, and a bicycle play area.

Significant progress was made in April. Crews from the Public Works department began paving work to install four temporary pickleball courts while Parks staff ran water lines and built new community garden plots. Staff are putting the finishing touches on the community gardens and expect to make them available to the community in May. For more information, please visit: [WWW.KIRKLANDWA.GOV/HOUGHTON-PARK-AND-PLAY](http://WWW.KIRKLANDWA.GOV/HOUGHTON-PARK-AND-PLAY)



New features at the Houghton Park & Ride site

## PARK PLANNING & DEVELOPMENT

Below is a high-level summary and status update of the active Park Planning and Development projects. Please visit the Park Planning and Development [WEBSITE](#) to learn more about these projects.

### EVEREST PARK PLAY AREA AND ADA ENHANCEMENTS

Everest Park playground has been identified as the next playground to be replaced for the benefit of the community. Staff plans to release a Request for Proposal for professional services in Spring 2024 to design the playground and connect accessible pathways.

*Background of the Project:* This ongoing capital project strives to replace aging playgrounds, improve sports courts, and make ADA improvements in the parks throughout the system.

### HOUGHTON AND EVEREST RESTROOM REPLACEMENT

The restroom building at Houghton Park is planned for replacement. During the scoping process, staff identified opportunities to analyze the building's current location and potential for programmatic improvements. Staff has contracted with a consultant to develop preliminary 10% design options and costing for further consideration. The restroom building at Everest Park is planned for design in 2024 and construction in 2025 due to its age and condition. Staff has contracted with a consultant to develop design and construction drawings. Design is underway.

*Background of the Project:* This capital project repairs or replaces park restrooms in the system.

### MARINA PARK SHORELINE RENOVATIONS

The project has been refined to focus on repairs to the south fingers and pier along with a few upland repairs and modest path and amenity improvements. The consultant is finalizing 60% drawings for review.

*Background of the Project:* Shoreline structures at Marina Park were evaluated and identified for repairs in the 2019 Kirkland Shoreline Structures Assessment Report. In late 2022, a portion of the sidewalk and stairs at Marina Park experienced significant subsidence.

### O.O. DENNY PARK PICNIC SHELTER

A new additional picnic shelter is in planning and design. This design currently mimics the existing shelter and will add capacity for the community. The project is currently in permitting with bidding planned for June.

*Background of the Project:* Addition of a picnic shelter using funds transferred from the Finn Hill Park District.



Rendering of planned O.O. Denny Park picnic shelter

## HUMAN SERVICES

### KIRKLAND CARES LOW-INCOME SUPPORT PROGRAM

During the 2023-2024 budget process, the City Council added \$680,000 in new funding for Kirkland's first universal low-income rate discount program to help mitigate the impacts of inflation and higher utility rates. City staff from Finance and Human Services worked throughout 2023 to develop the new program. Kirkland Cares Low-Income Support Program was launched in early April to support qualifying households at or below 80% of Area Median Income (AMI). The program includes discounts on utilities (water, sewer, and garbage), pet licensing, car registration, and business licensing fees. Learn more about the program: [HTTPS://FORWARDPLATFORM.COM/KIRKLAND-CARES-LOW-INCOME-SUPPORT-PROGRAM/](https://forwardplatform.com/kirkland-cares-low-income-support-program/).

### 2024 KIRKLAND YOUTH SUMMIT

The Kirkland Youth Council (KYC) welcomed about 75 students from Kirkland middle and high schools to the Kirkland Youth Summit on April 2 at Lake Washington Institute of Technology (LWIT). Youth Council partnered with Lake Washington School District and LWIT to host this event for the first time since 2018. KYC members worked with community experts from Eastside for All and Youth Eastside Services to develop materials and sessions on mental health and school safety. Participants spent about two hours in small groups discussing the two topics. Information gathered from these discussions will be used to develop the Youth Council's work plan for the next two years.



### 2025-2026 HUMAN SERVICES GRANT APPLICATION CLOSES

The grant application window for the 2025-2026 Human Services Funding Collaborative (HSFC) closed on April 8. The Collaborative coordinates human services funding between North, East, and South King County municipalities including Auburn, Bellevue, Burien, Covington, Des Moines, Federal Way, Issaquah, Kenmore, Kent, Kirkland, Redmond, Renton, Sammamish, SeaTac, Shoreline, and Tukwila. For the 2025-26 biennium, the HSFC received 345 applications, totaling \$64 million in requests. The City of Kirkland received a record-breaking 128 applications for funding. The total requested was \$5.4 million, or \$10.8 million for the biennium. The Human Services Commission will start the application review process in May to prepare for final grant recommendations for City Council in September 2024. To learn more about current grantees visit the [Human Services Dashboard](#). To learn more about the shared grant application process, visit the [Share 1 website](#).

### FRIENDS OF YOUTH AFFORDABLE HOUSING PROGRESS

Human Services staff and City leaders recently toured Iva Place, which will be a two-story apartment building operated by Friends of Youth dedicated to housing young people, ages 18-24, who meet income eligibility requirements. Future residents will lease individual private rooms and share fully furnished living quarters. Developed largely through funding and partnerships from ARCH and King County, Iva Place is the first of its kind on the Eastside. Friends of Youth anticipates the building will be available for occupancy in early summer 2024.



### HUMAN SERVICES COMMISSION JOINT STUDY SESSION WITH CITY COUNCIL

On April 2, the Human Services Commission (HSC) held a joint study session with City Council to discuss several topics including the Human Services Grant Application review process and whether a community needs assessment would be helpful. The HSC shared what they learned during 2023, where they met with more than 14 organizations that provide services and support to the Kirkland community. The HSC intentionally reached out to small, Black, Indigenous, and People of Color led organizations and those that center on marginalized groups who may not have access to basic needs and supportive services. The City Council provided guidance on the Human Services Grant recommendations process, supporting the continuation of the three-fold funding option as a strategy for providing 2025-2026 grant recommendations.

## PARK MANAGEMENT & OPERATIONS

### APRIL SHOWERS AND APRIL FLOWERS (AND APRIL BALLGAMES)

Parks Management has been busy partnering with colleagues at Public Works to create new pickleball courts and community garden plots at the former Houghton Park and Ride. Meanwhile, the grass is growing, ballgames are in full swing, and weeds are everywhere. Here are monthly highlights from our four crews:

#### BALLFIELDS/CEMETERY

- Fixed infields daily after rains to keep games going.
- Prepped games daily at all ballfield sites.
- Mowed and line trimmed all sports fields.
- Weeded warning tracks and flower beds at Peter Kirk Park.
- Completed burials and internments at the Cemetery.
- Aerated and seeded school partnership sites.
- Pressure washed at the Cemetery in preparation for Memorial Day.

#### HORTICULTURE

- Pruned trees at Mark Twain Park.
- Conducted post-storm tree inspections and pruning in response to high wind event.
- Removed aging rock rose bushes around the tennis court and mulched the gardens at Heritage Park.
- Cleaned and mulched the flower beds at NKCC.
- Delivered ecology blocks and installed hose hydrants in the new garden at the former Houghton Park and Ride.
- Started up the pumps at waterfront parks to prepare for summer irrigation.
- Pressure washed the Marina pavilion.

#### NATURAL AREAS/GREEN KIRKLAND PARTNERSHIP

- Provided materials and supplies for twelve Steward and contractor-led volunteer events.
- Hosted two school volunteer events at Watershed Park.
- Pruned street trees along North Rose Hill Woodlands.
- Installed 28 new garden beds at former Houghton Park and Ride.
- Repaired damaged turf around the playground at Juanita Beach Park.
- Brushcut blackberry along the access road at Edith Moulton Park.
- Pressure washed the picnic shelters at Juanita Beach Park.

#### SUPPORT

- Pressure washed the playgrounds at OO Denny, NKCC, and Mark Twain parks.
- Repaired electrical issue in the classroom building at McAuliffe Park.
- Aerated and removed moss from the turf, installed new chlorine tank, and repaired the boiler at the Peter Kirk Pool.
- Started up drinking fountains for the season.
- Completed playground inspections across the system.
- Installed metal slats that secure the grating on the new boardwalk at Totem Lake Park.
- Added sand to the play area at Tot Lot Park.
- Assisted Public Works in the installation of a new sewer line connection at McAuliffe Park.
- Prepared for installation of new storage containers at McAuliffe Park.

#### UPCOMING EVENTS

- The Green Kirkland Partnership is hosting 10 events in May. More information can be found at [WWW.GREENKIRKLAND.ORG](http://WWW.GREENKIRKLAND.ORG). We hope to see you there!



Preparing gardens at Houghton Park & Ride



New larger chlorine tank at Peter Kirk Pool

## RECREATION SERVICES



### STAFF UPDATE: WELCOME KATELYN

Katelyn Abadeer joined the department on April 1 as a Program Assistant at the North Kirkland Community Center (NKCC). Katelyn comes to us from the City of Bellevue where she played a large role in their Downtown Movies in the Park series as a Recreation Program Technician. She is also a former head coach of the Auburn Riverside High School Dance Team. Go Ravens! We are thrilled to have her on our team. Please feel free to stop by NKCC and welcome Katelyn to the City of Kirkland.

### MERMAID BALL

North Kirkland Community Center made a big SPLASH with our 3rd annual Mermaid Ball on March 29. Over 100 children ages 3 – 10 attended the dance with a parent/guardian where they enjoyed refreshments, dancing, a mermaid craft, and a commemorative photo.



### TEENS & TWEENS SOLVING MYSTERIES

The Kirkland teens and tweens celebrated the end of April with a Whodunit Mystery Party. The event guided the 40+ participants to ask questions and provided four rounds of scripts to mingle and share with others. The 11–18-year-olds had a great time solving the mystery; using the scripts and forensics reports, they sorted through the many motives to apprehend the perpetrator. One of the participants happily reported, "I haven't talked to this many people since [the pandemic]!"



April Teen Night participants

## SPECIAL EVENT SERVICES

Staff support activities listed below through permitting; coordination with other City departments for street closures, Fire and Police support, safety and sanitary regulations, and banners; City facility use such as parks, parking lots, and streets, evening and weekend on-call logistical support; and communication with the public. Learn more at [KIRKLANDWA.GOV/SPECIALEVENTS](https://www.kirklandwa.gov/specialevents).



### THE ORAL CANCER FOUNDATION WALK FOR AWARENESS

Survivors, families, and friends gathered at Juanita Beach Park on April 27 to participate in the Oral Cancer Foundation’s annual walk for awareness. The pre-walk program included free cancer screenings, speakers, and survivor stories. The waterfront walk wrapped around the park’s boardwalk and then looped through Juanita Bay Park. The event raises awareness and funds that allow for the organization to invest in new research, create educational programs, advocate for public policy, and support oral cancer survivors. To learn more, go to [ORALCANCERFOUNDATION.ORG](https://www.oralcancerfoundation.org).

### BELTANE FESTIVAL

Kirkland based PNW Witches’ Market hosted the 2nd Annual Beltane Festival at Juanita Beach Park on April 28. More than one thousand people attended the free one-of-a-kind community event that celebrates spring at its peak. The event featured 120+ mystical merchants and artisans, performances, food trucks, dancing around the Maypole, a bonfire on the beach, educational workshops and more. Attendees were invited to participate in psychic readings, mini-lectures, and community chat space activities. Learn about the host organization at [WWW.PNWWITCHESMARKET.COM](https://www.pnwwitchesmarket.com).



### JUANITA FRIDAY MARKET

Excitement is building for the upcoming 18th season of the farmers market as preparations are in full swing! With over seventy applications received from vendors, community organizations, and entertainers, our team is busy curating an exceptional experience. Anticipate an enriched market showcasing locally crafted products infused with diverse cultural influences. To learn about the market and how you can get involved, go to: [WWW.KIRKLANDWA.GOV/JUANITAFRIDAYMARKET](https://www.kirklandwa.gov/juanitafridaymarket).

### UPCOMING EVENTS

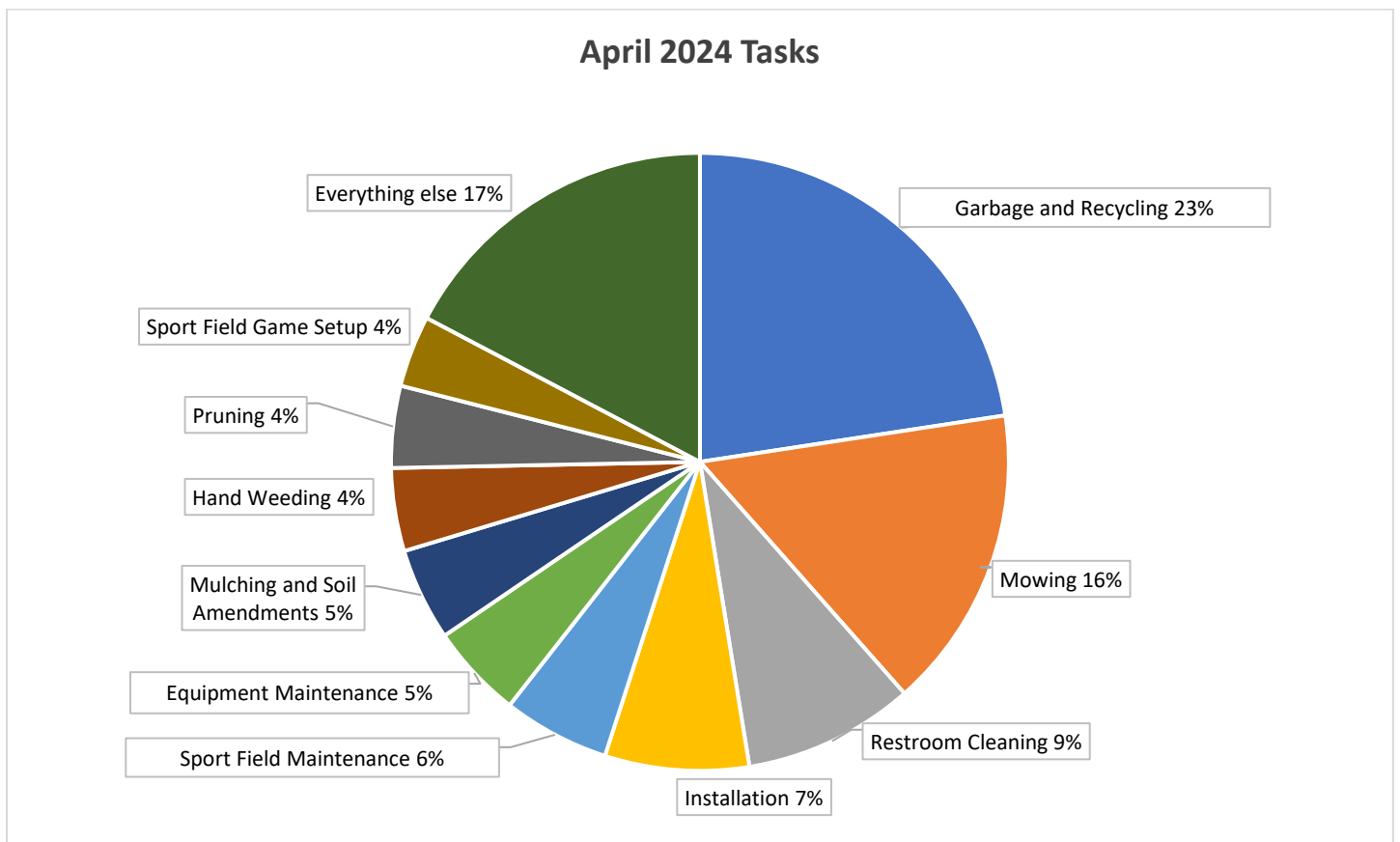
DATE	EVENT	LOCATION	OTHER INFO
Sunday, May 5	Kirkland Half Marathon & 5K	Juanita Beach Park	<a href="https://www.orcarunning.com/kirklandhalf">ORCARUNNING.COM/KIRKLANDHALF</a>
Saturday, May 18	Curtains Up	Houghton Village	<a href="https://www.studio-east.org/curtains-up">STUDIO-EAST.ORG/CURTAINS-UP</a>
Monday, May 27	7 Hills of Kirkland	Marina Park	<a href="https://k03048.site.kiwanis.org/7-hills-of-kirkland-2024">K03048.SITE.KIWANIS.ORG/7-HILLS-OF-KIRKLAND-2024</a>

## PARKS MAINTENANCE DATA

### LABOR HOURS BY TASK

Task	Hours
Beach Maintenance	4.25
Brush Clearing	38.25
Cemetery and Burial Services	17.25
Cleaning	97.75
Contracted Crew Restoration of Natural Areas	0.5
Edging and Line Trimming	68.75
Equipment Maintenance	199.25
Event Support	66.75
Garbage and Recycling	913.75
Hand Weeding	175.75
Inspection	64
Installation	305
Inventory Management	2.25
Leading	9
Leaf Removal and Blowing	54.5

Task	Hours
Mowing	642.5
Mulching and Soil Ammendments	196
Nursery Management	6
Pesticide Application	48.50
Pruning	173.25
Repair	86.75
Restroom Cleaning	362
Sport Field Game Setup	151.5
Sport Field Maintenance	226
Tree Inspection and Inventory	12.25
Tree Removal and Chipping	3.25
Turf Repair and Maintenance	77.75
Watering	0.5
Winterization and Spring Start Up	40.75
<b>GRAND TOTAL</b>	<b>4,044</b>



**PARKS MAINTENANCE LABOR HOURS BY PARK**

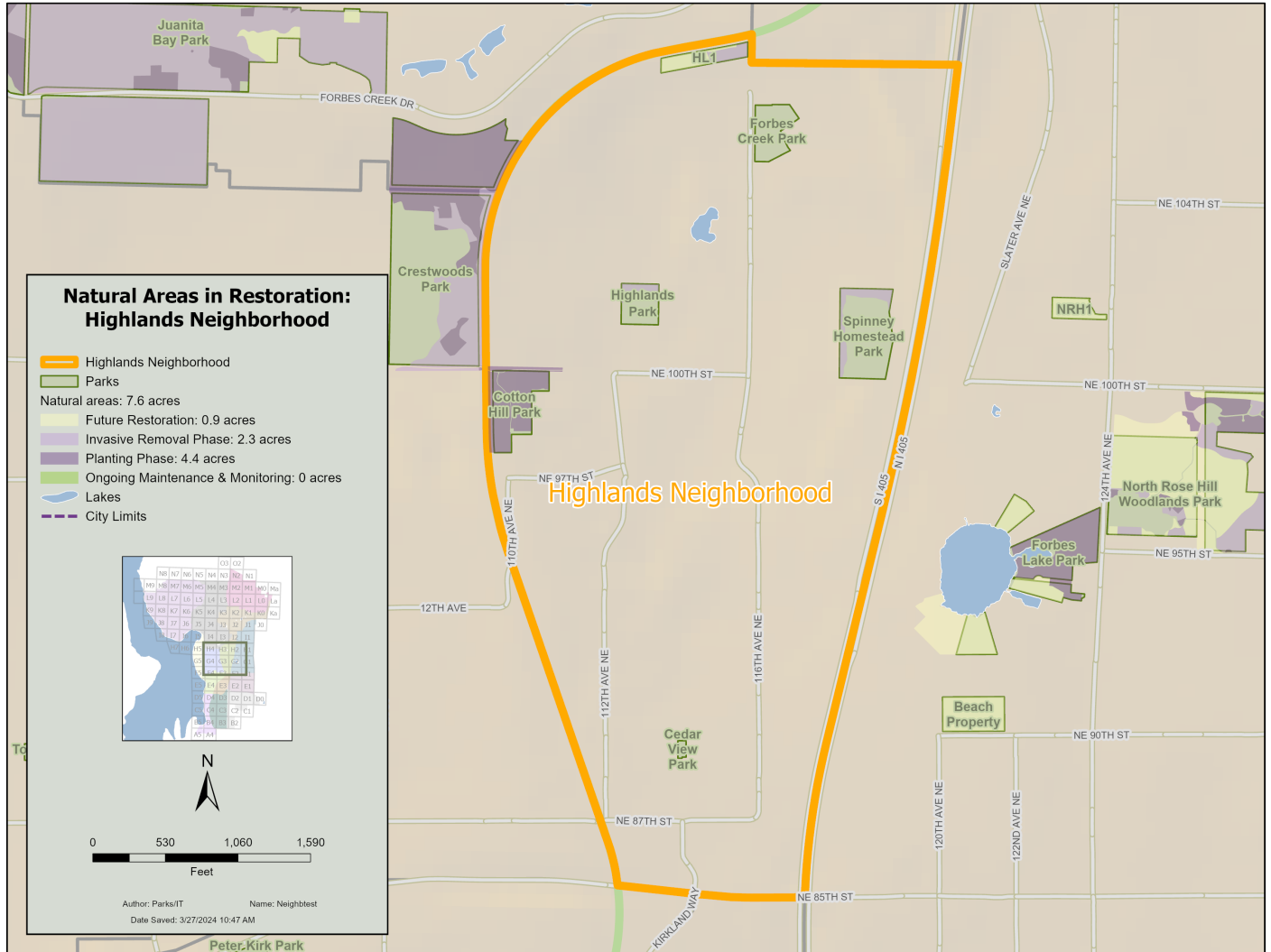
Park/Location	Hours
132nd Square Park	196.75
2nd Avenue South Dock	17.25
Ben Franklin Elementary School Field	33
Brookhaven Park	7.75
Bud Homan Park	10.75
Carillon Woods	20.75
Cedar View Park	9.75
Cotton Hill Park	3.75
Crestwoods Park	249.5
David E. Brink Park	38.25
Doris Cooper Houghton Beach Park	94.75
Edith Moulton Park	71.5
Emerson High School Field	17.25
Everest Park	222.25
Finn Hill Middle School Field	74.75
Fisk Family Park	10.75
Forbes Creek Park	16.75
Hazen Hills Park	8.5
Heritage Park	178.5
Heronfield Wetlands	10
Highlands Park	12.75
HL1	7
Houghton Park and Ride	263
Josten Park	16.5
JU1	31
JU2	8.5
Juanita Bay Park	103
Juanita Beach Park	342
Juanita Elementary School Field	22
Juanita Heights Park	5.25
KG2	2.75
Kingsgate Park	7
Kirkland Cemetery	126.75
Kiwanis Park	5.75

Park/Location	Hours
Lake Ave W Street End Park	12.5
Lakeview Elementary School Field	10
Marina Park	116.25
Mark Twain Elementary School Field	20
Mark Twain Park	59
Marsh Park	65.75
McAuliffe Park	158.25
North Kirkland Com Ctr & Park	99.75
North Rose Hill Woodlands Park	74
O O Denny Park	112.25
Parks Maintenance Center	119.75
Peter Kirk Elementary School Field	16
Peter Kirk Park	336
Peter Kirk Pool	104
Phyllis A. Needy - Houghton Neighborhood	40.75
Reservoir Park	19.25
Rose Hill Elementary School Field	15.75
Rose Hill Meadows	56.25
Rotary Central Station	6.25
Settler's Landing	17
Snyder's Corner Park	15.5
South Norway Hill Park	2.25
South Rose Hill Park	38.5
Spinney Homestead Park	16.5
Terrace Park	9
Tot Lot Park	24.5
Totem Lake Park	78.25
Van Aalst Park	35.5
Watershed Park	20.25
Waverly Beach Park	77
Windsor Vista Park	16.5
Yarrow Bay Wetlands	5.75
<b>GRAND TOTAL</b>	<b>4044.0</b>



### GREEN KIRKLAND PARTNERSHIP DATA

Green Kirkland currently has 35 active natural parkland sites in the City of Kirkland and has enrolled over 315 acres in restoration. Here are the 2024 statistics for the Highland neighborhood.

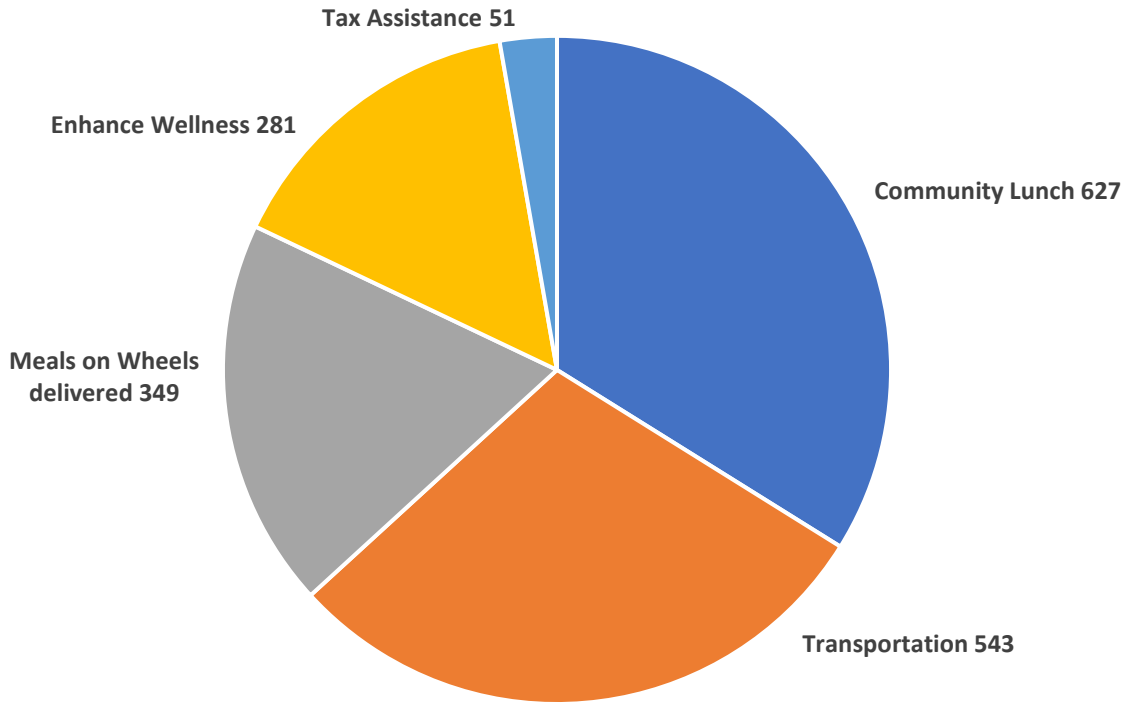


M:\Parks\Staff\GIS\XSD\Parks\All\_Parks\Neighborhoods\Neighbrest.aprx

Produced by the City of Kirkland. © 2024, the City of Kirkland, all rights reserved. No warranties of any sort, including but not limited to accuracy, fitness or merchantability, accompany this product.

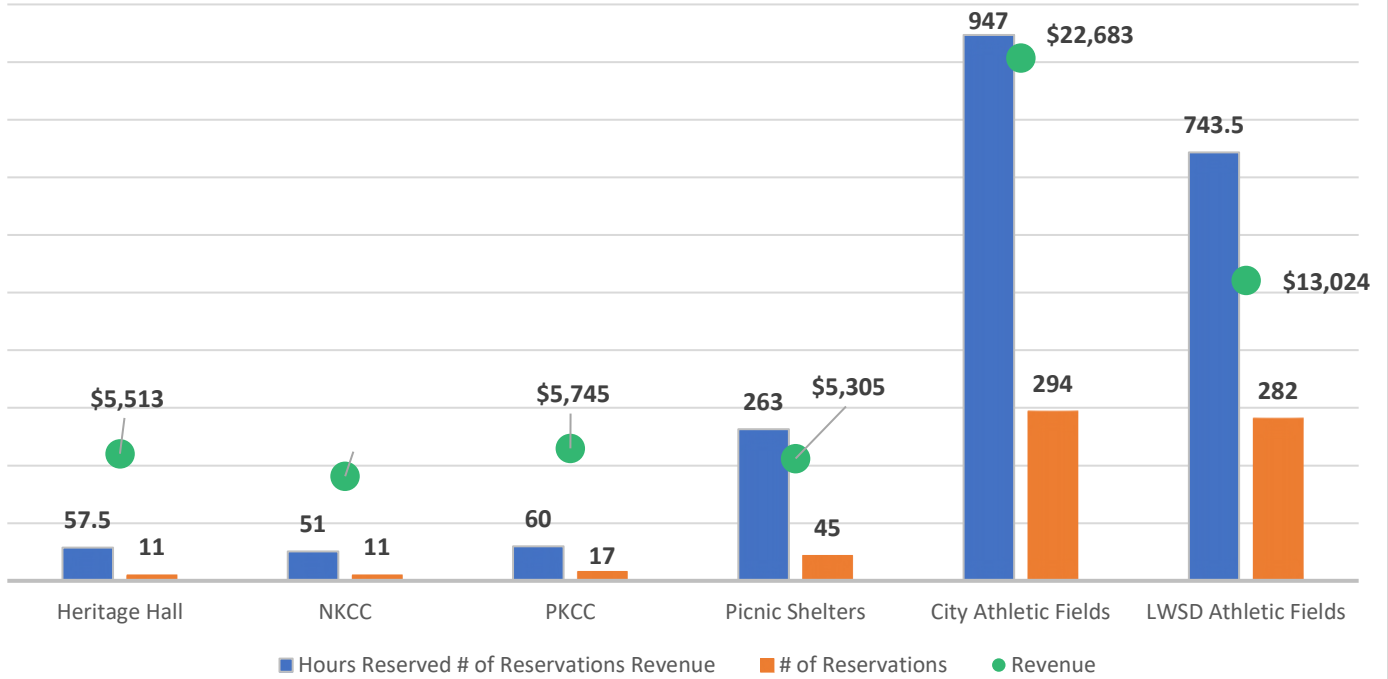
RECREATION DATA

SENIOR SERVICES - MARCH 2024

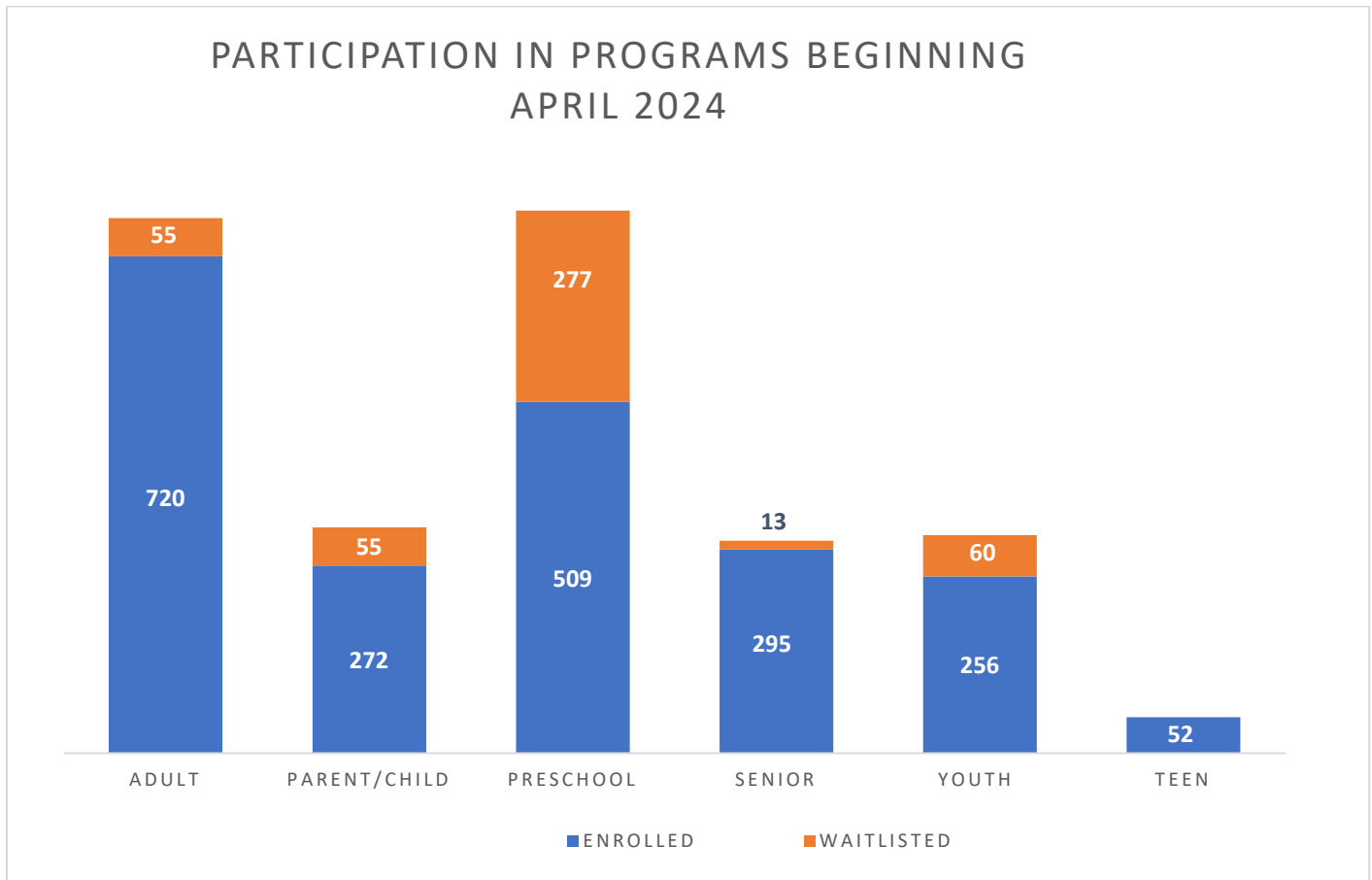


\*Senior Services Data reported by agencies the month after services provided

ALL RENTALS - APRIL 2024



**RECREATION PROGRAM DATA**



**RECREATION SCHOLARSHIP DATA**

Recreation Scholarships		
	Current Month	YTD
Applications approved	11	45
Donation funds used	\$2,777.73	\$15,435.76
Donation funds received	\$400.00	\$3,552.00