

KIRKLAND PARKS & COMMUNITY SERVICES – MAY 2024



This spring, the Kirkland park system added several new inclusive play features.

Musical instruments were installed at North Kirkland Community Park and 132nd Square Park. These instruments are great for improving hand-to-eye coordination, rhythm, and fine motor skills. They encourage children and adults to explore creating music. Music has also been used therapeutically for neurodivergent individuals to reduce stress and anxiety and promote communication.

- A small Rainbow Metallophone was installed at North Kirkland Community Center Park. This instrument is turned to the pentatonic scale.
- A Penta post, consisting of five rainbow-colored chimes, was installed at 132nd Square Park. This instrument is also pentatonically tuned.
- Musical cattail chimes will soon be installed at Totem Lake Park.



Rainbow Metallophone at NKCC Park

A new communication board was installed at 132nd Square Park. A communication board is an augmentative and alternative communication (AAC) aid commonly used by language learners and individuals with autism spectrum disorder who are non-verbal. The pictures and symbols on the board provide non-verbal, speech-challenged, and language learners a way to communicate with others.

This recent addition to 132nd Square Park provides playground visitors a new way to express themselves. Thanks to BSA Scout Evan Frank and BSA Troop 565 for their support of this project.



Penta Post instrument at 132nd Square Park



Communication Board at 132nd Square Park

ADMINISTRATION

PCS STAFF COMPLETE LEADERSHIP BOOTCAMP

During May, multiple PCS staff completed the City's first Leadership Bootcamp program including Maryke Burgess, Recreation Supervisor; Amanda Judd, Human Services Coordinator for Community Wellbeing; Meli Paulo, Homeless Outreach Coordinator; Anny Smith, Human Services Coordinator for Equity; and Marianne Wood, Groundsperson. The program, which began in October 2023, included guest lecturers, individual and group assignments, and ended with group presentations during the graduation event. Congratulations to our staff graduates!

HOUGHTON PARK AND RIDE ACTIVATION

Significant progress was made on the transformation of the former Houghton Park and Ride to the Houghton Park and Play in May. The community gardens officially opened on Monday, May 2024. The temporary pickleball courts will open in early June. Additional improvements will be added throughout the summer. For more information, please visit:

WWW.KIRKLANDWA.GOV/HOUGHTON-PARK-AND-PLAY



Community Gardens at Houghton Park and Play

HUMAN SERVICES

HOMELESS OUTREACH UPDATE

Kirkland received one of ten referrals for the first move-in phase of the King County Health through Housing site in Redmond. The referral was approved, with a move-in date for early summer, pending construction being completed. This was also the City's first enrollment of a client into the hotel set aside pilot program. Staff successfully utilized the hotel set aside program so that the client had a safe and stable place while going through the Health through Housing application process and during the transition period until their housing unit is ready.

With the use of flexible funds, a vehicle that had been parked at a park for more than four months was restored. Staff secured shelter for the individual, which allowed them to attend a job interview. Staff will continue to support the individual while working to find them a more stable living situation.

Staff assisted another individual in securing and relocating to permanent housing. Special thanks to the Holy Family Church in Kirkland for furnishing their entire residence.

Staff successfully referred a family of five residing in their vehicle to the Safe Parking Program at Lake Washington United Methodist Church.

PARK PLANNING & DEVELOPMENT

Below is a high-level summary and status update of the active Park Planning and Development projects. Please visit the Park Planning and Development [WEBSITE](#) to learn more about these projects.

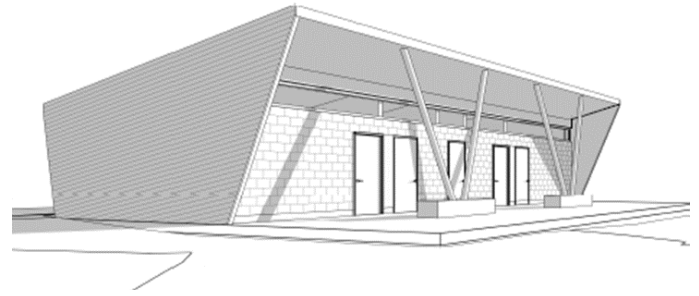
EVEREST PARK PLAY AREA AND ADA ENHANCEMENTS

Everest Park playground has been identified as the next playground to be replaced for the benefit of the community. Staff plans to release a Statement of Qualifications for professional services Spring 2024 to design the playground and connecting accessible pathways.

Background of the Project: This ongoing capital project fund strives to replace aging playgrounds, improve sports courts, and make ADA improvements in the parks throughout the system.

HOUGHTON AND EVEREST RESTROOM REPLACEMENT

The restroom building at Houghton Park is planned for replacement. During the scoping process, staff identified opportunities to analyze the building's current location and potential for programmatic improvements. Staff has contracted with a consultant to develop preliminary 10% design options and costing for further consideration. Design is underway.



Everest Park 30% design rendering

The restroom building at Everest Park is planned for design in 2024 and construction in 2025 due to its age and condition. Staff has contracted with a consultant to develop design and construction drawings. Design is underway.

Background of the Project: This capital project repairs or replaces park restrooms in the system. Restrooms at Houghton and Everest Restrooms have been identified for replacement due to their age and condition.

MARINA PARK SHORELINE RENOVATIONS

The project has been refined to focus on repairs to the south fingers and pier along with a few upland repairs and modest path and amenity improvements. The consultant has finalized 60% drawings for review.

Background of the Project: Shoreline structures at Marina Park were evaluated and identified for repairs in the 2019 Kirkland Shoreline Structures Assessment Report. In late 2022, a portion of the sidewalk and stairs at Marina Park experienced significant subsidence.

O.O. DENNY PARK PICNIC SHELTER

A new additional picnic shelter has been designed and will be constructed in proximity to the existing shelter, adding capacity for the community. The project is currently in permitting with bidding in June.



Drawing of proposed O.O. Denny picnic shelter

Background of the Project: Addition of a picnic shelter using funds transferred from the Finn Hill Park District.

PARK MANAGEMENT & OPERATIONS

HERE COMES THE HOUGHTON PARK AND PLAY!

Getting the new community gardens open at the all-new (temporary) Houghton Park and Play was a massive team effort; and the pickleball courts will be done by mid-June. Even with all that happening, we still got our core work done. Here are monthly highlights from our four crews:

BALLFIELDS/CEMETERY

- Worked with volunteers from the volleyball community to do a complete overhaul of the Juanita Beach volleyball courts including changing the orientation by 90 degrees.
- Fixed infields daily after rains to keep games going.
- Prepared the cemetery, including providing flags and crosses, to be ready for Memorial Day.
- Hosted several baseball and softball tournaments, especially on evenings and weekends.
- Finalized irrigation start up at all sport field and school sites.



Juanita Beach Park volleyball court work

HORTICULTURE

- Completed herbicide applications before summer in downtown and waterfront park beds.
- Pruned young trees for clearance and structural integrity at Mark Twain, Peter Kirk, and Waverly parks.
- Cleaned winter debris and trash from beaches at Marina, Brink, Marsh, Houghton, Waverly, and OO Denny parks.
- Weeded and mulched the sign beds at Peter Kirk Park.
- Finalized irrigation start up at all assigned locations including downtown and waterfront parks.
- Pressure washed around the Kirkland Performance Center and Peter Kirk Community Center.

NATURAL AREAS/GREEN KIRKLAND PARTNERSHIP

- Provided materials and supplies for fourteen Steward and contractor led volunteer events.
- Pruned the trails at Carillon, Juanita Bay, North Rose Hill Woodlands, and Edith Moulton parks.
- Installed cisterns and hoses at restoration sites for summer watering.
- Partnered with the Horticulture team to hire watering seasonal staff and create a summer watering plan.
- Hand weeded the parking lot and sign beds, and pressure washed the picnic shelter at Juanita Beach Park.
- Brush cut thistle at Juanita Bay, Juanita Beach, Edith Moulton, and Watershed parks.



Pruning work at Juanita Bay Park

SUPPORT

- Installed shade sails at the Totem Lake Park playground.
- Installed storage containers at McAuliffe Park.
- Refurbished benches for Van Aalst Park.
- Repaired the dock railing at Juanita Beach Park.
- Installed a trough drain at Houghton Beach Park to keep sand from building up in the turf by the showers.
- Installed entry gates at Houghton Park and Play.
- Installed a communication board at 132nd Square Park playground as part of an Eagle Scout project.
- Completed playground inspections at all locations.



Shade Sails at Totem Lake Park

UPCOMING EVENTS

- The Green Kirkland Partnership is hosting 16 events in June. More information can be found at WWW.GREENKIRKLAND.ORG. We hope to see you there!

RECREATION SERVICES

LIFEGUARD TRAINING

Training is at full swing at the Peter Kirk Pool. 11 new lifeguards completed our lifeguard certification course, which consists of 7 hours of online coursework and 22 hours of in-person training and testing. Staff also conducted lifeguard recertification training. Staff will conduct First Aid training later in June to certify about 30 staff for the 2024 season. The annual preseason in-service training took place on Saturday June 1, 2024. This training goes over our emergency action plans (EAP) and works on team building so the whole aquatics team is ready to serve the community for the season. The pool opens for the 2024 season on Monday, June 4, 2024.



PERIWINKLE OUTDOOR EXPLORERS

The popular Periwinkle Outdoor Explorers program at Edith Moulton Park will expand from two days per week to three days per week, starting in the fall. The program is already full for next school year!

PEE WEE SOCCER

Our Pee Wee league wrapped up its spring season on May 18, 2024. 324 youth and over 75 volunteers participated in this year's program at 132nd Square Park. This league is focused on fun, participation, and socialization. Participants learn soccer skills and how to work together as a team.

AFTER SCHOOL CAMP HIGHLIGHT

The Peter Kirk After School Camp successfully raised 20 butterflies during the month of May. This fun project allowed campers to see firsthand the life cycle of the caterpillars as they progressed into beautiful butterflies. The campers released the butterflies on Friday, May 31, at Peter Kirk Park. Families of campers also enjoyed the project as they observed changes each day at camp pickup. Some families joined the campers for the release of the butterflies!



After School Camp butterfly release

DATE/TIME	EVENT	LOCATION	OTHER INFO
Sat, July 27, 2024 9am – 5pm	Pickleball Tournament	Houghton Park and Play	WWW.KIRKLANDPARKS.NET

SPECIAL EVENT SERVICES

Staff support activities listed below through permitting; coordination with other City departments for street closures, Fire and Police support, safety and sanitary regulations, and banners; City facility use such as parks, parking lots, and streets, evening and weekend on-call logistical support; and communication with the public. Learn more at KIRKLANDWA.GOV/SPECIALEVENTS.



KIRKLAND HALF & 5K

ORCA RUNNING proudly organized the annual Kirkland Half & 5k run/walk, held at the scenic Juanita Beach Park on May 5. Over 1,000 enthusiastic athletes embraced the early morning chill to take part in the vibrant event, featuring half marathon, 5k, and kids' courses. A dedicated team of fifty-plus volunteers and thirty-one off-duty police officers stood vigilant at strategic points along all three courses. The event culminated with the presentation of overall awards, recognizing the top three male, female, and non-binary runners.

CURTAINS UP

Studio East unveiled its annual Curtains Up event on May 18, set against the backdrop of their brand-new location in the heart of Houghton Village on 68th Street in Kirkland. The outdoor community festival offered free of charge, delighted attendees of all ages with a myriad of activities, including face painting, engaging games, costume exploration, a thrilling scavenger hunt, delectable treats, and lively Karaoke-style entertainment. It served as a delightful prelude to the announcement of the upcoming season's lineup. Learn more about the 2024-2025 season at STUDIO-EAST.ORG.

7 HILLS OF KIRKLAND

The Kirkland Kiwanis Foundation hosted the annual 7 Hills of Kirkland bike ride on Memorial Day with 20.2 and 38.4-mile routes. Cyclists embarked on their journey from Marina Park, where they were treated to live music, community vendors, and strawberry shortcake upon their return. Not only did the event provide a heart-pounding ride, but it also served the noble cause of raising funds to help provide housing and services to Eastside residents in need.



JUANITA FRIDAY MARKET

Plans for the 2024 Juanita Friday Market season were finalized in May. Staff received an influx of vendor applications, both from returning favorites and fresh faces. We've accepted 47 vendors for the 2024 season, with an additional six vendors on the waitlist. New vendor additions include a mushroom grower, Himalayan dumplings, and a local author, bringing a diverse array of offerings to our market community.

There has also been strong interest from community groups, with over 20 applications for community booth spots throughout the season. These include a range of organizations, from non-profit agencies to local preschools and advocacy groups. The market volunteer team is expanding, with the addition of two new volunteers complementing those who have returned from last year.

As we transition to warmer and drier weather, we anticipate the arrival of berries and fresh produce at opening day of the market on June 7. Learn about the market and how you can get involved at: WWW.KIRKLANDWA.GOV/JUANITAFRIDAYMARKET.

UPCOMING EVENTS

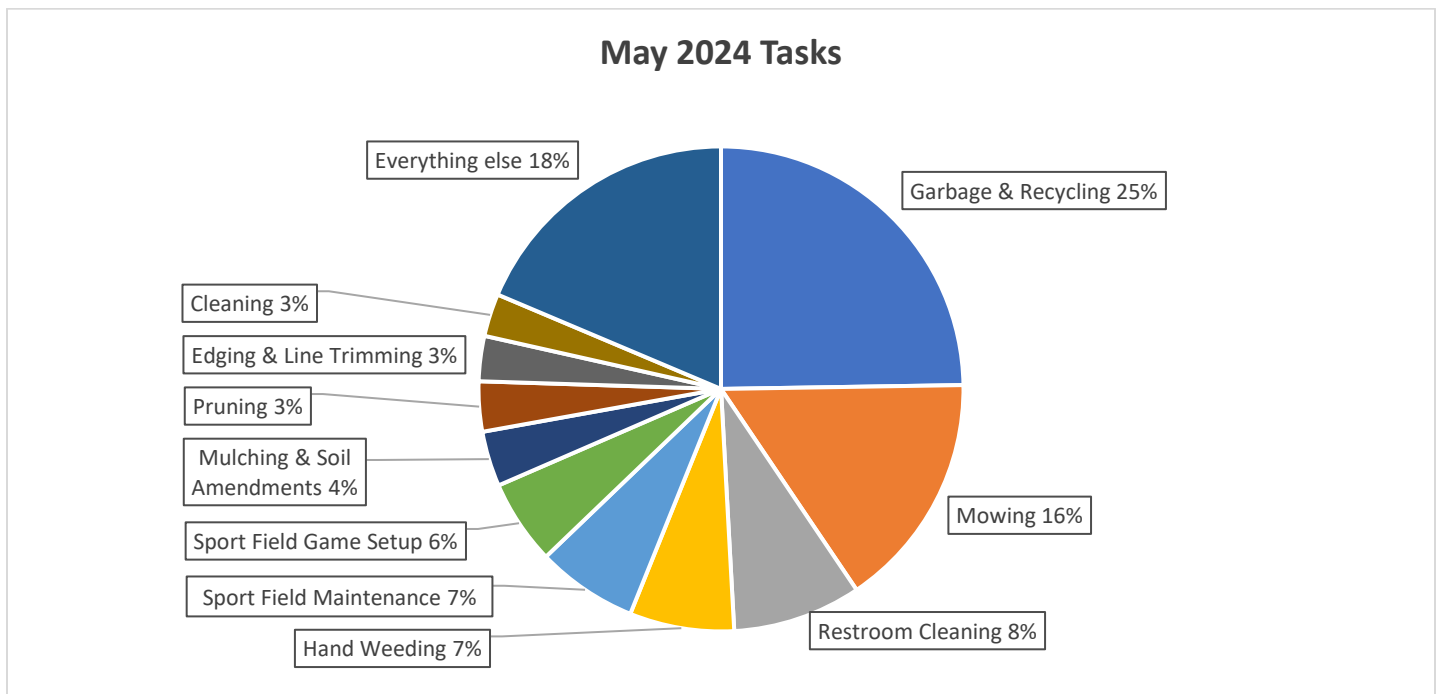
DATE/TIME	EVENT	LOCATION	OTHER INFO
June 1 8am - Noon	NAMI Walks WA 5k	Marina Park	WWW.NAMIWA.ORG/NAMIWALKS
June 15 Noon - 5pm	Eastside Honoring Juneteenth	Juanita Beach Park	EASTSIDEFORALL.ORG/EVENTS/JUNETEENTH2024/
Wednesdays, June – September 3pm - 7pm	Kirkland Wednesday Market	Marina Park	KIRKLANDDOWNTOWN.ORG/EVENTS/KIRKLAND-MARKET/
Fridays, June – September 3pm – 7pm	Juanita Friday Market	Juanita Beach Park	WWW.KIRKLANDWA.GOV/JUANITAFRIDAYMARKET

PARKS MAINTENANCE DATA

LABOR HOURS BY TASK

Task	Hours
Beach Maintenance	28.5
Brush Clearing	106.5
Cemetery and Burial Services	40.25
Cleaning	154.75
Contracted Crew Restoration of Natural Areas	2
Edging and Line Trimming	163.75
Equipment Maintenance	99.75
Event Support	77
Garbage and Recycling	1345.75
Hand Weeding	379.25
Insane Impact LED	1
Inspection	109.75
Installation	136.25
Inventory Management	2
Leading	9.5
Leaf Removal and Blowing	106
Mowing	859.5

Task	Hours
Mulching and Soil Amendments	200.25
Nursery Management	11.25
Outreach and Education	1
Pesticide Application	16.5
Planting	46
Pool Maintenance	9.75
Pruning	181.5
Repair	94
Restroom Cleaning	466.5
Sport Field Game Setup	307.25
Sport Field Maintenance	366.25
Tree Inspection and Inventory	14.5
Tree Removal and Chipping	7.5
Turf Repair and Maintenance	24.5
Water Chemistry	13
Watering	5.50
Winterization and Spring Start Up	51.5
GRAND TOTAL	5,438.25



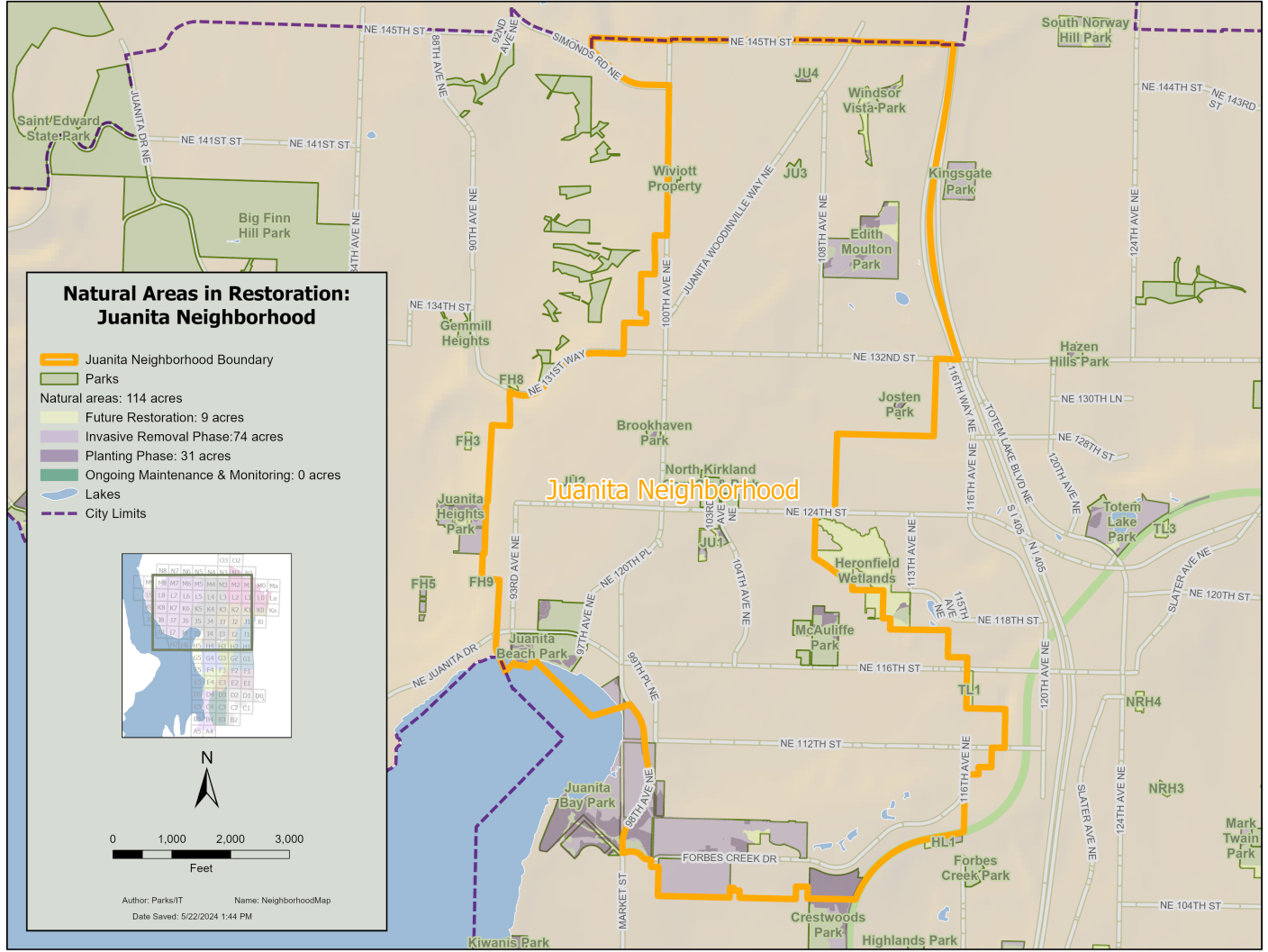
PARKS MAINTENANCE LABOR HOURS BY PARK

Park/Location	Hours
132nd Square Park	247.5
2nd Avenue South Dock	24
Ben Franklin Elementary School Field	31.75
Brookhaven Park	7.25
Bud Homan Park	6.5
Carillon Woods	41.25
Cedar View Park	8.25
CKC	0.75
Cotton Hill Park	7.5
Crestwoods Park	303.75
David E. Brink Park	77.5
Doris Cooper Houghton Beach Park	204.75
Edith Moulton Park	97.75
Emerson High School Field	33.75
Everest Park	464.5
FH4	3
Finn Hill Middle School Field	80
Fisk Family Park	20.5
Forbes Creek Park	27.75
Forbes Lake Park	0.5
Hazen Hills Park	14.5
Heritage Park	112.75
Heronfield Wetlands	23
Highlands Park	17.5
HL1	1
Houghton Park and Ride	235
Josten Park	18
JU1	9
JU2	4.5
Juanita Bay Park	172.75
Juanita Beach Park	594.75
Juanita Elementary School Field	26.25
Juanita Heights Park	1.5
KG2	5
Kingsgate Park	9.25

Park/Location	Hours
Kirkland Cemetery	216.5
Kirkland Middle School Field	1.5
Kiwanis Park	9.25
Lake Ave W Street End Park	8.25
Lakeview Elementary School Field	23
Marina Park	171.25
Mark Twain Elementary School Field	22.75
Mark Twain Park	42.75
Marsh Park	115.75
McAuliffe Park	193.25
North Kirkland Com Ctr & Park	121.25
North Rose Hill Woodlands Park	60.25
O O Denny Park	202
Parks Maintenance Center	134
Peter Kirk Elementary School Field	13.75
Peter Kirk Park	438.5
Peter Kirk Pool	65.5
Phyllis A. Needy - Houghton Neighborhood	37.5
Reservoir Park	17
Rose Hill Elementary School Field	13.75
Rose Hill Meadows	49.5
Rotary Central Station	6.25
Settler's Landing	24.25
Snyder's Corner Park	41.25
South Norway Hill Park	5.25
South Rose Hill Park	61.75
Spinney Homestead Park	29.75
Terrace Park	13.5
Tot Lot Park	45.25
Totem Lake Park	91.75
Van Aalst Park	28.5
Watershed Park	27.75
Waverly Beach Park	138.5
Windsor Vista Park	34
GRAND TOTAL	5,438.25

GREEN KIRKLAND PARTNERSHIP DATA

Green Kirkland currently has 35 active natural parkland sites in the City of Kirkland and has enrolled over 315 acres in restoration. Here are the 2024 statistics for the Juanita neighborhood.

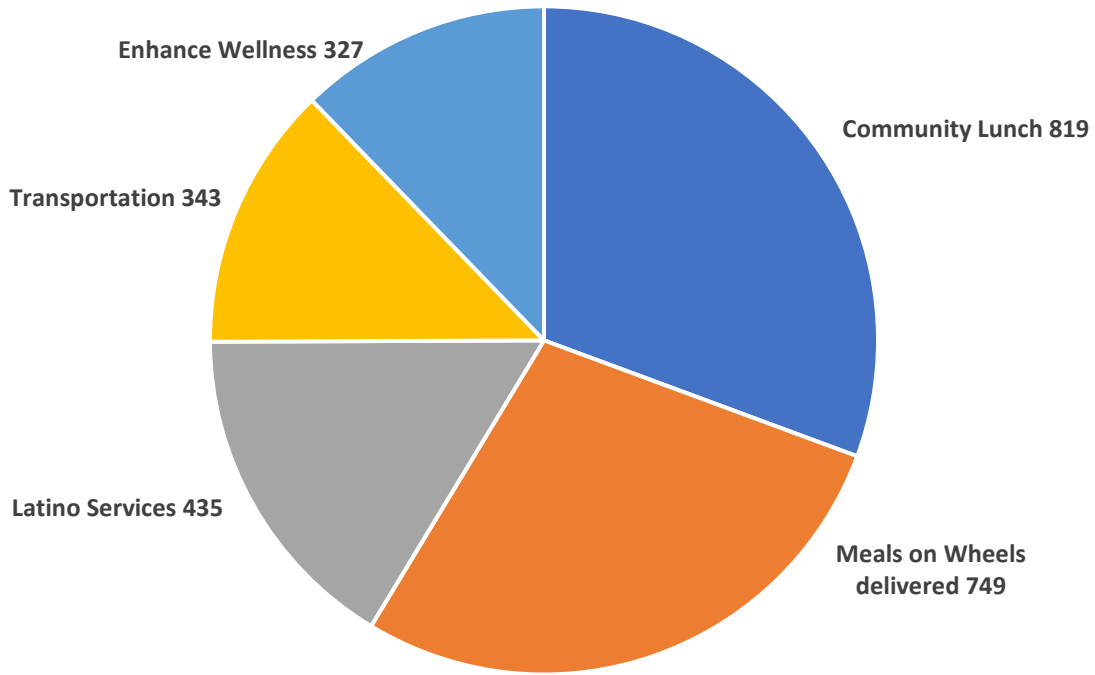


M:\Parks\Staff\jra\MSD\Parks\All_Parks\Neighborhoods\NeighborhoodMap.aprx

Produced by the City of Kirkland. © 2024, the City of Kirkland, all rights reserved. No warranties of any sort, including but not limited to accuracy, fitness or merchantability, accompany this product.

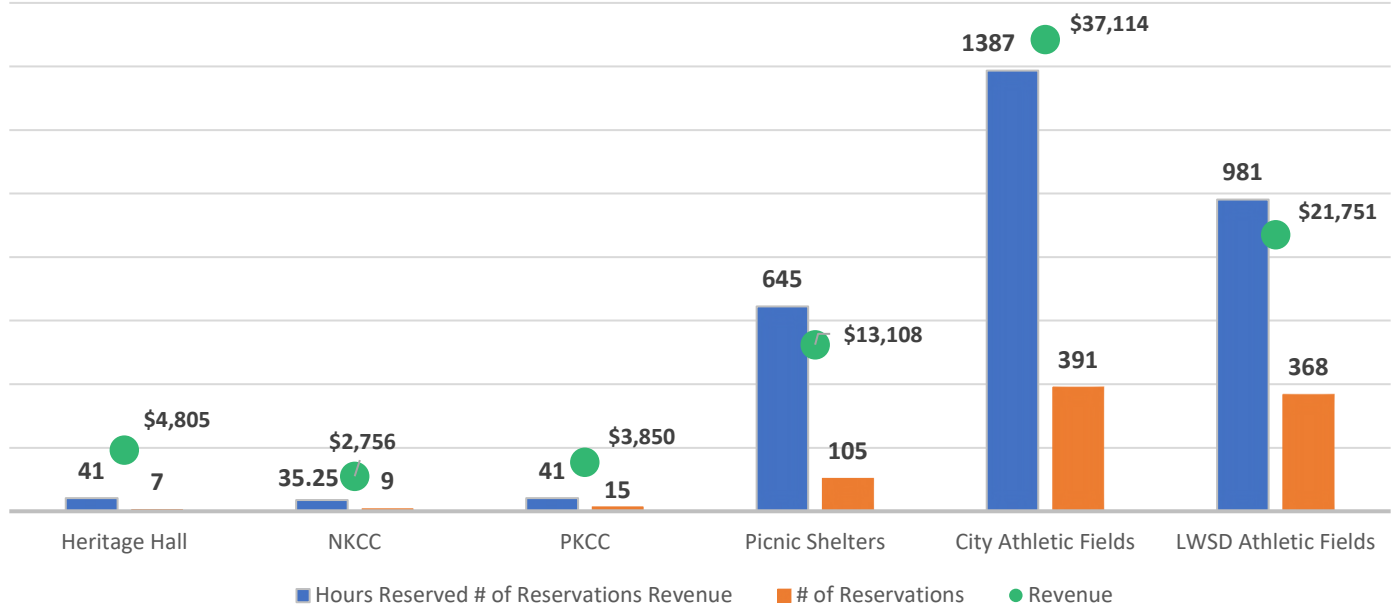
RECREATION DATA

SENIOR SERVICES - April 2024

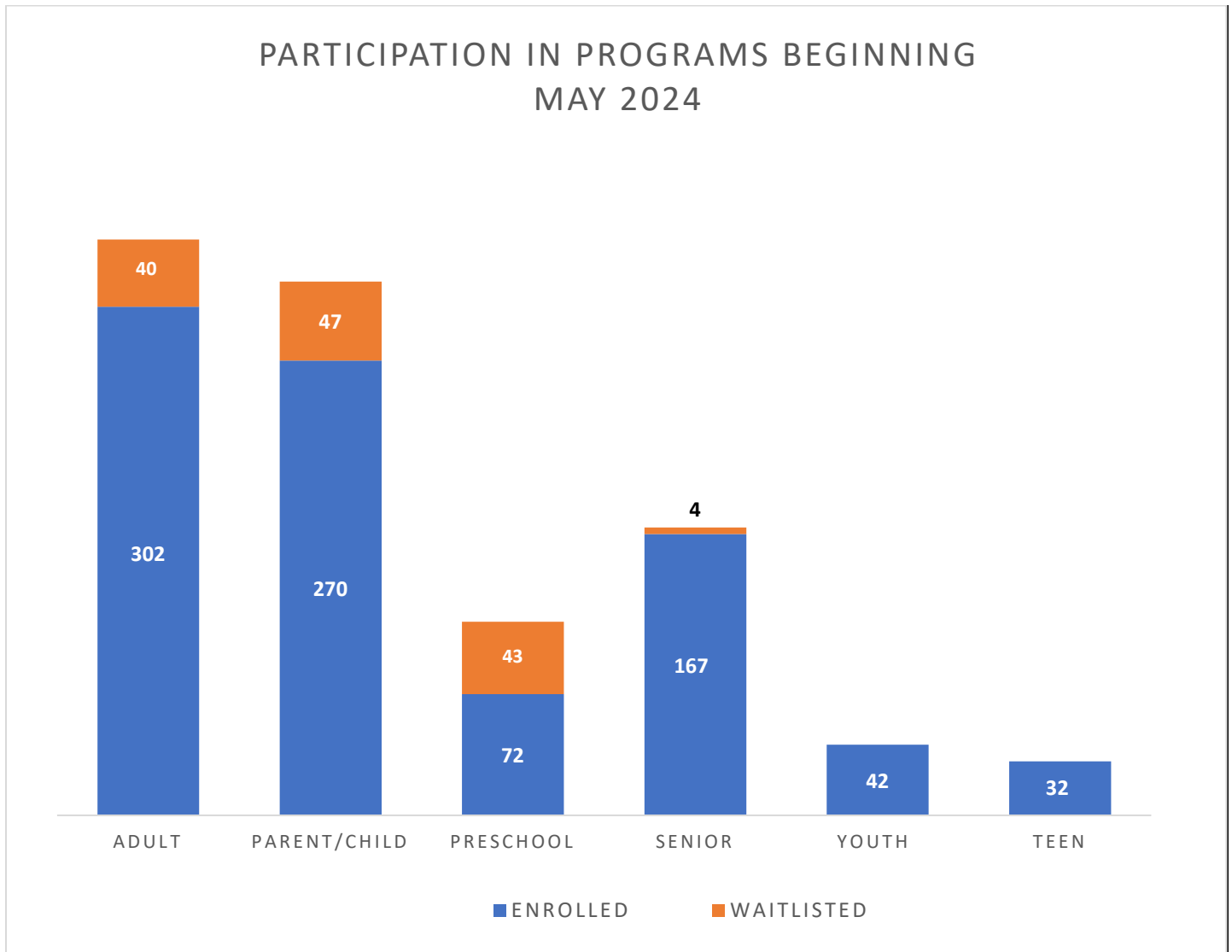


*Senior Services Data reported by agencies the month after services provided

ALL RENTALS - MAY 2024



RECREATION PROGRAM DATA



RECREATION SCHOLARSHIP DATA

Recreation Scholarships		
	Current Month	YTD
Applications approved	4	49
Donation funds used	\$651.70	\$16,087.46
Donation funds received	\$227.00	\$3,779.00