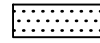

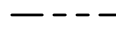

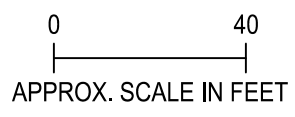




MATCH LINE - SEE SHEET 2

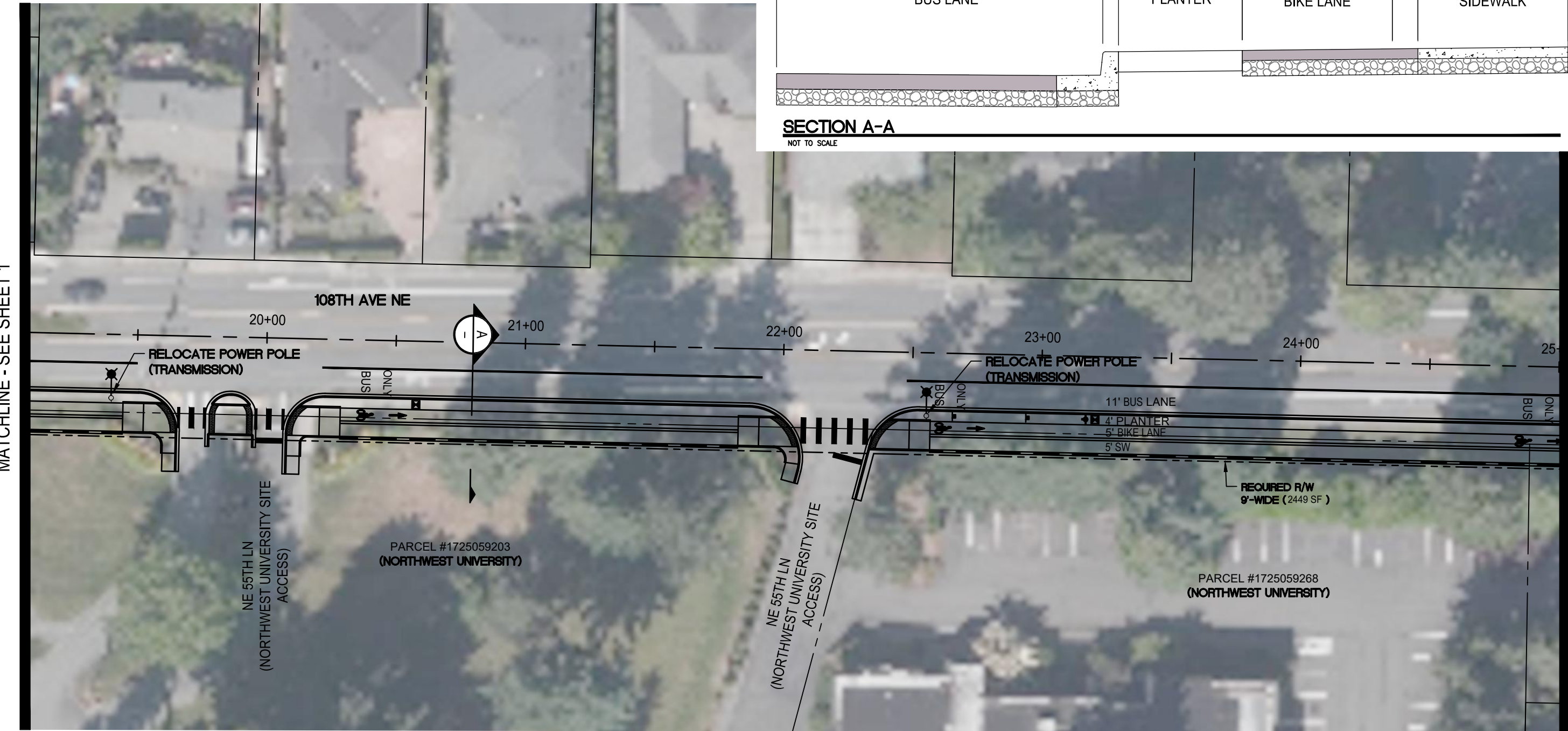
**LEGEND**

-  BUS PLATFORM
-  ADA RAMP
-  PROPOSED R/W
-  RETAINING WALL



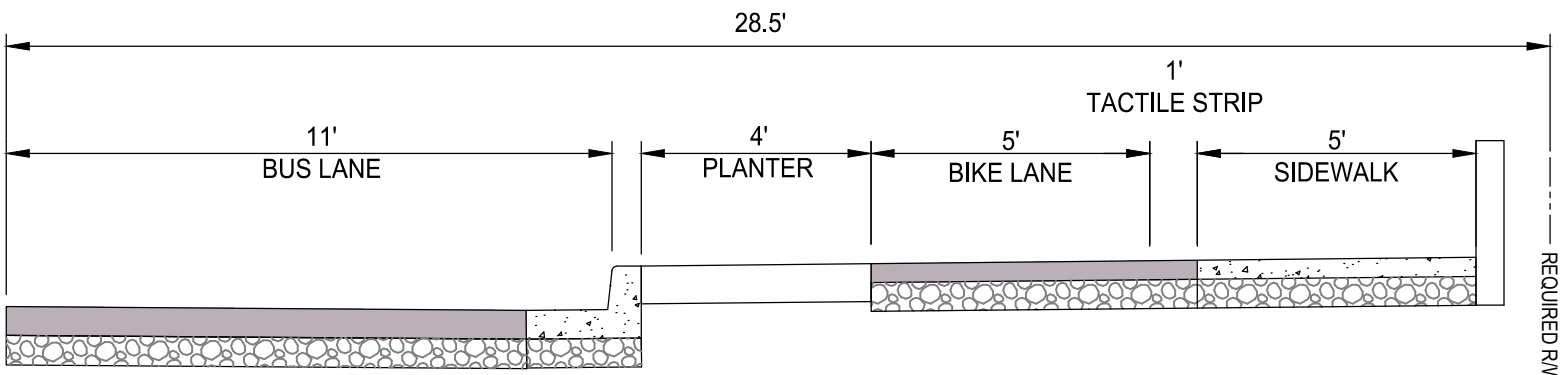
PRELIMINARY

 11241 Willows Road NE, Suite 200 Redmond, WA 98052 425.822.4446 www.otak.com	 Transportation Engineering NorthWest Transportation Planning   Design   Traffic Impact & Operations 11400 SE 8th Street, Suite 200, Bellevue, WA 98004   Office (425) 889-6747 Project Contact: Chris Bicket, P.E. Phone: 425-250-5002	<b>6TH STREET SOUTH (108TH AVE NE)</b> <b>KIRKLAND, WA</b>	SHEET <b>1</b>
		<b>CONCEPTUAL NORTHBOUND BAT LANE LAYOUT</b>	OF <b>7</b>



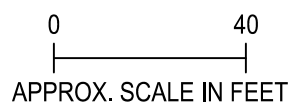
MATCHLINE - SEE SHEET 1

MATCHLINE - SEE SHEET 3



**SECTION A-A**  
NOT TO SCALE

- LEGEND**
- BUS PLATFORM
  - ADA RAMP
  - PROPOSED R/W
  - RETAINING WALL

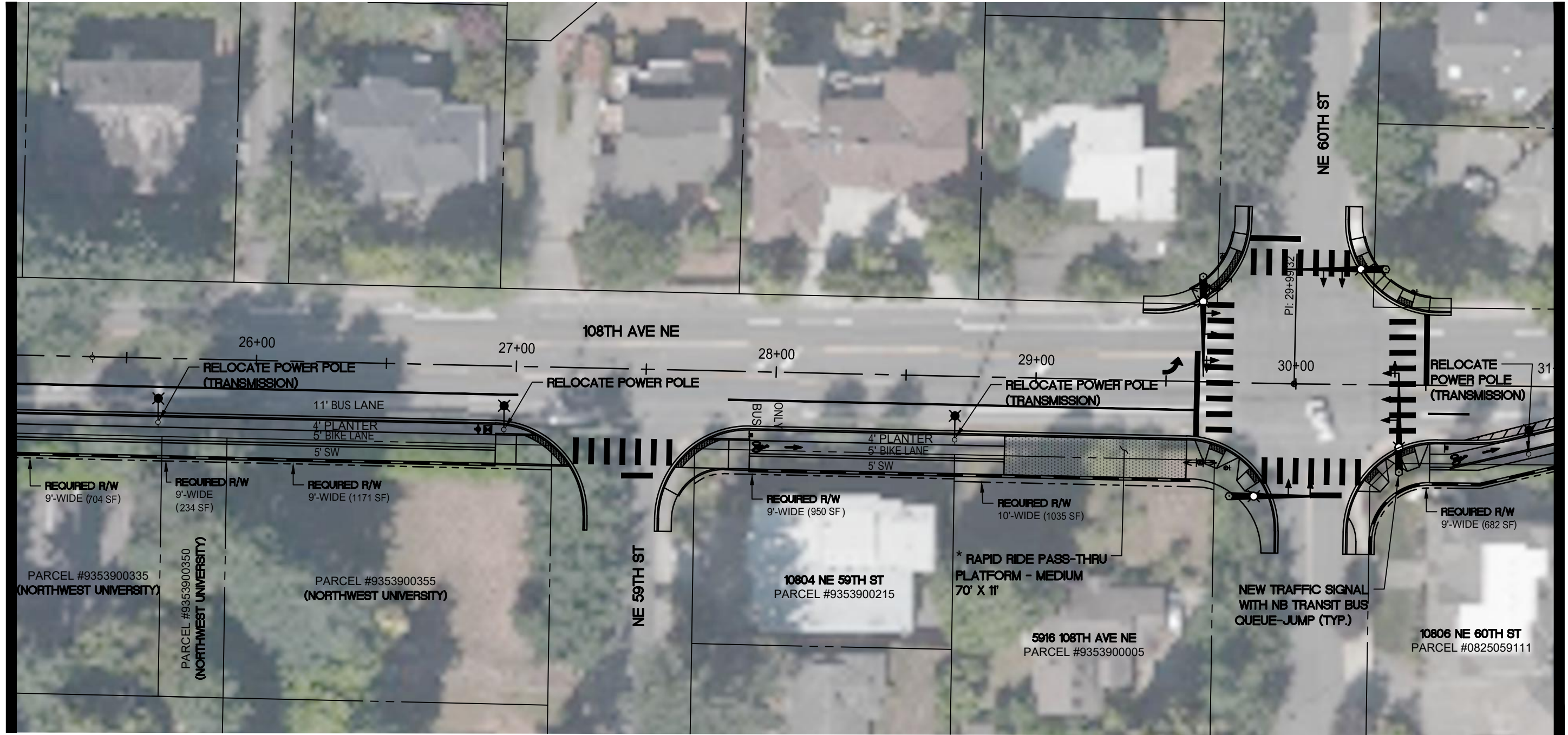


**Otak**  
11241 Willows Road NE, Suite 200  
Redmond, WA 98052  
425.822.4446  
www.otak.com

**TENW**  
Transportation Engineering NorthWest  
Transportation Planning | Design | Traffic Impact & Operations  
11400 SE 8th Street, Suite 200, Bellevue, WA 98004 | Office (425) 889-6747  
Project Contact: Chris Bicket, P.E.  
Phone: 425-250-5002

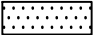

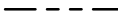

<b>PRELIMINARY</b>	
6TH STREET SOUTH (108TH AVE NE) KIRKLAND, WA	SHEET <b>2</b>
CONCEPTUAL NORTHBOUND BAT LANE LAYOUT	OF <b>7</b>

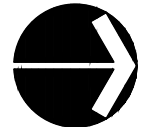
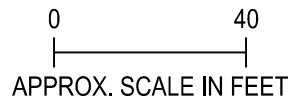
MATCH LINE - SEE SHEET 2



MATCH LINE - SEE SHEET 4

**LEGEND**

-  BUS PLATFORM \*
-  ADA RAMP
-  PROPOSED R/W
-  RETAINING WALL



\* SHARED-USE PATH CONFIGURATION AT RAPID RIDE PLATFORM SHOULD BE FURTHER EVALUATED TO ELIMINATE POTENTIAL PEDESTRIAN/BICYCLE CONFLICTS



11241 Willows Road NE, Suite 200  
Redmond, WA 98052  
425.822.4446  
www.otak.com



Transportation Engineering NorthWest  
Transportation Planning | Design | Traffic Impact & Operations  
11400 SE 8th Street, Suite 200, Bellevue, WA 98004 | Office (425) 889-6747  
Project Contact: Chris Bicket, P.E.  
Phone: 425-250-3002

PRELIMINARY

6TH STREET SOUTH (108TH AVE NE)  
KIRKLAND, WA

CONCEPTUAL NORTHBOUND BAT LANE LAYOUT

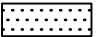

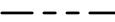

SHEET  
**3**  
OF  
**7**

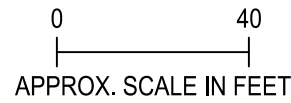


MATCH LINE - SEE SHEET 3

MATCH LINE - SEE SHEET 5

**LEGEND**

-  BUS PLATFORM
-  ADA RAMP
-  PROPOSED R/W
-  RETAINING WALL



11241 Willows Road NE, Suite 200  
Redmond, WA 98052  
425.822.4446  
www.otak.com



Transportation Engineering NorthWest

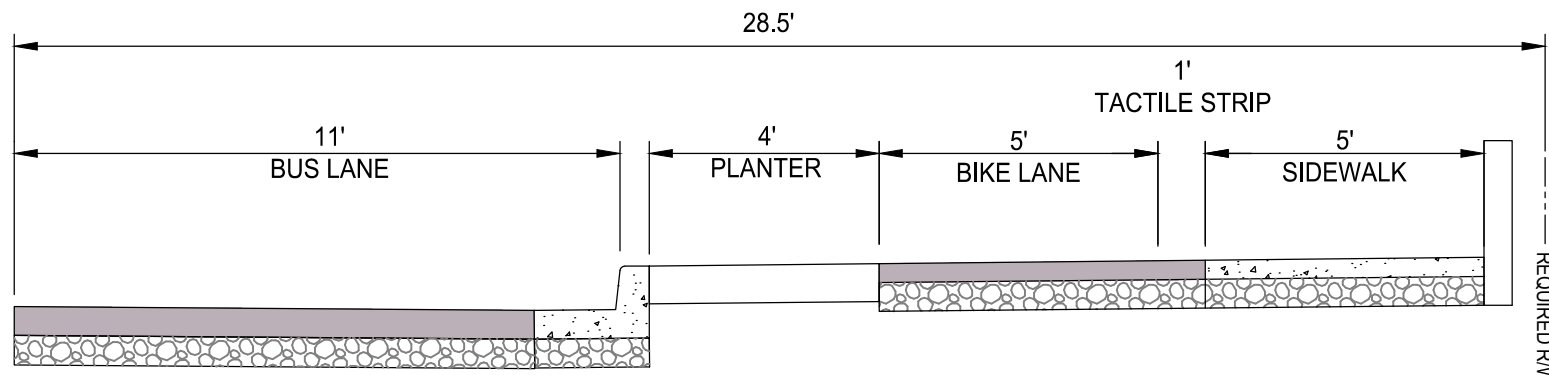
Transportation Planning | Design | Traffic Impact & Operations  
11400 SE 8th Street, Suite 200, Bellevue, WA 98004 | Office (425) 889-6747  
Project Contact: Chris Bicket, P.E.  
Phone: 425-250-5002

6TH STREET SOUTH (108TH AVE NE)  
KIRKLAND, WA

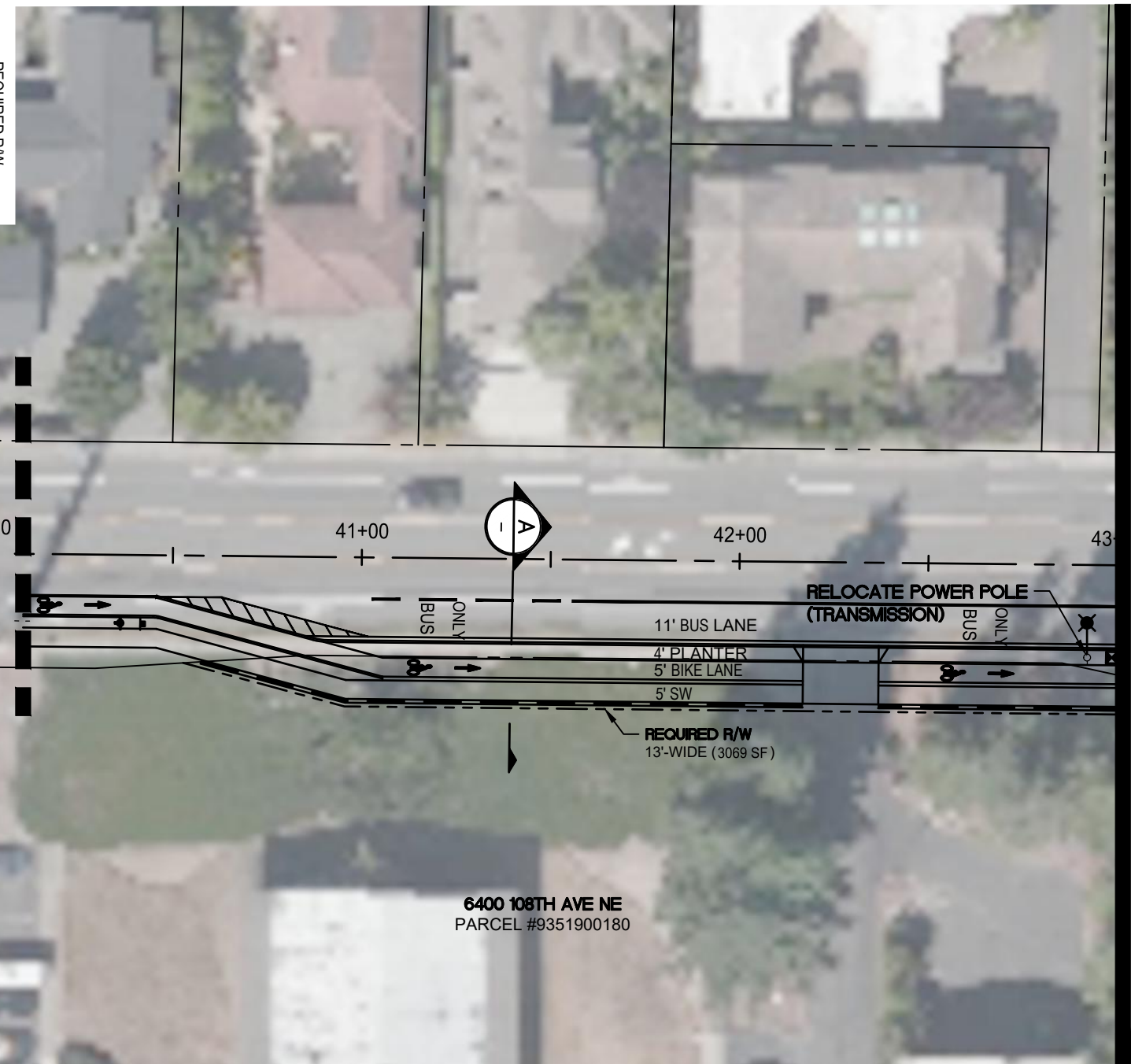
CONCEPTUAL NORTHBOUND BAT LANE LAYOUT

PRELIMINARY

SHEET	4
OF	7



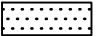

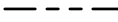

**SECTION A-A**  
NOT TO SCALE

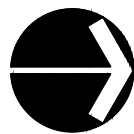
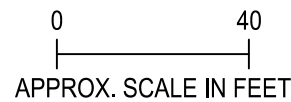


MATCH LINE - SEE SHEET 3

MATCH LINE - SEE SHEET 5

**LEGEND**

-  BUS PLATFORM
-  ADA RAMP
-  PROPOSED R/W
-  RETAINING WALL



11241 Willows Road NE, Suite 200  
Redmond, WA 98052  
425.822.4446  
www.otak.com



Transportation Engineering NorthWest

Transportation Planning | Design | Traffic Impact & Operations  
11400 SE 8th Street, Suite 200, Bellevue, WA 98004 | Office (425) 889-6747  
Project Contact: Chris Bicket, P.E.  
Phone: 425-250-5002

6TH STREET SOUTH (108TH AVE NE)  
KIRKLAND, WA

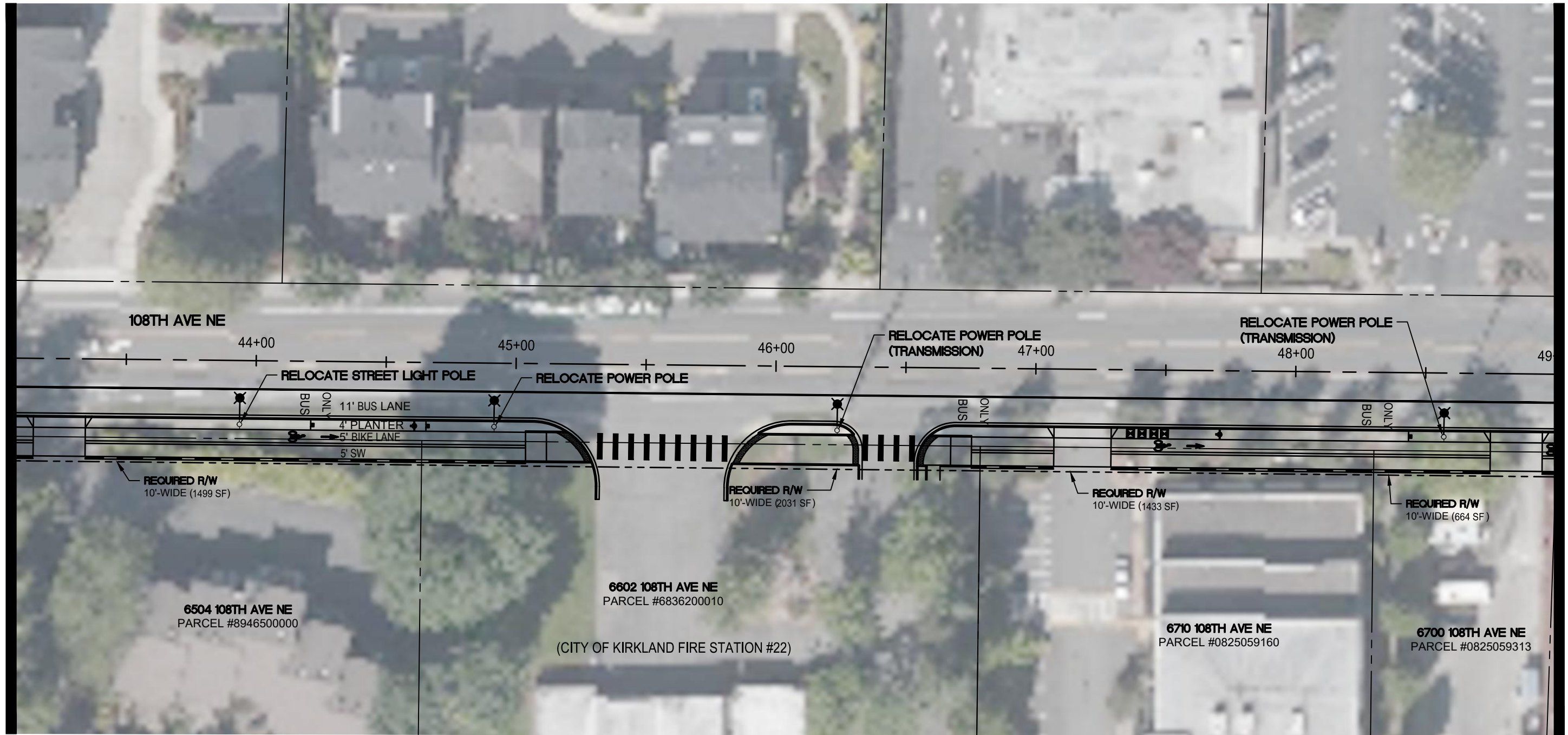
CONCEPTUAL NORTHBOUND BAT LANE LAYOUT

PRELIMINARY

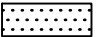

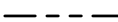

SHEET  
**5**  
OF  
**7**

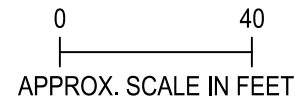
MATCH LINE - SEE SHEET 5

MATCH LINE - SEE SHEET 7



LEGEND

-  BUS PLATFORM
-  ADA RAMP
-  PROPOSED R/W
-  RETAINING WALL



11241 Willows Road NE, Suite 200  
Redmond, WA 98052  
425.822.4446  
www.otak.com



Transportation Engineering NorthWest  
Transportation Planning | Design | Traffic Impact & Operations  
11400 SE 8th Street, Suite 200, Bellevue, WA 98004 | Office (425) 889-6747  
Project Contact: Chris Bicket, P.E.  
Phone: 425-250-5002

PRELIMINARY

6TH STREET SOUTH (108TH AVE NE)  
KIRKLAND, WA

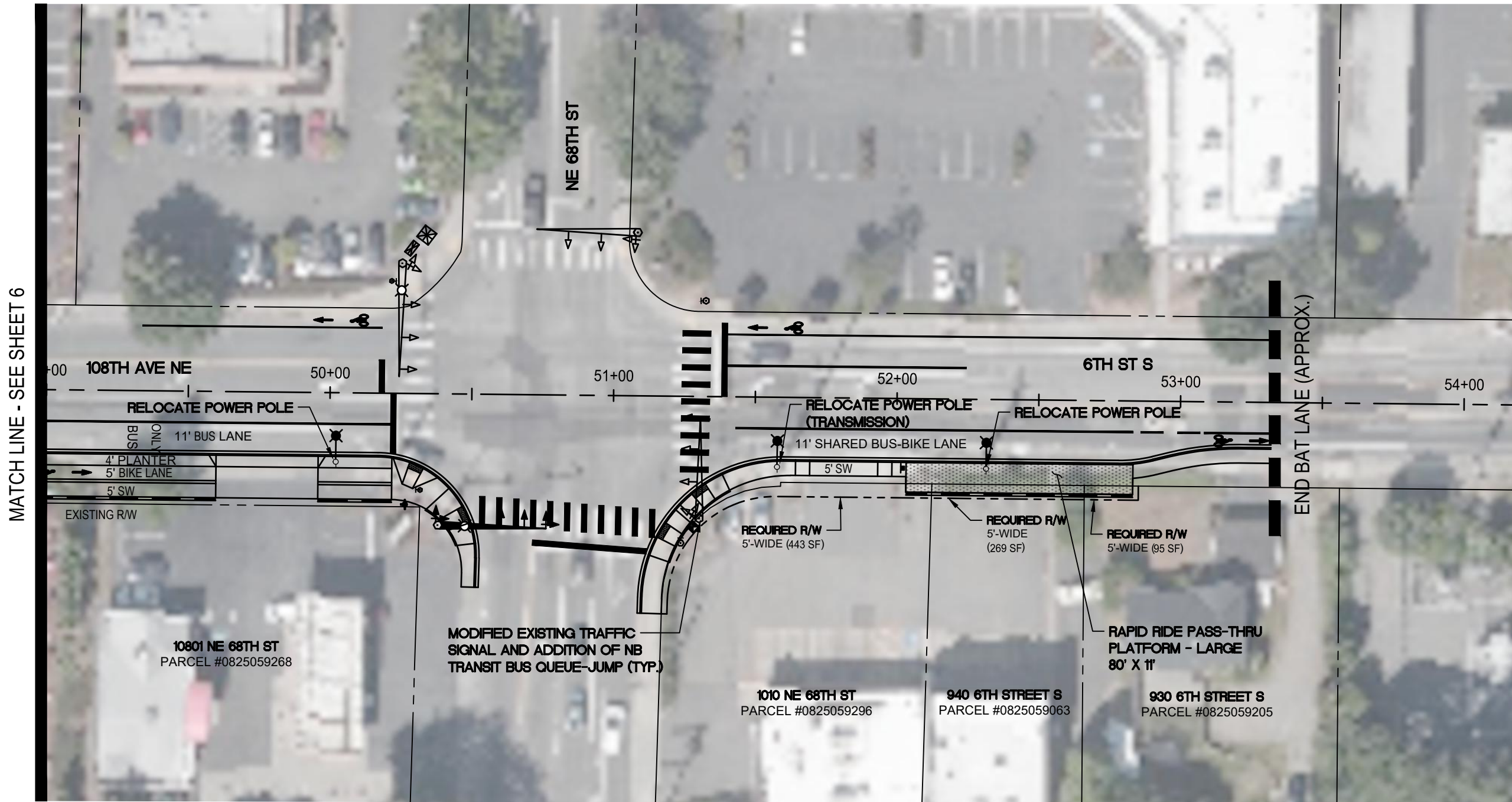
CONCEPTUAL NORTHBOUND BUS LANE LAYOUT

SHEET

6

OF

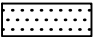

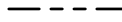

7

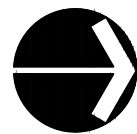
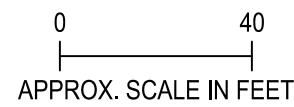


MATCH LINE - SEE SHEET 6



END BAT LANE (APPROX.)

**LEGEND**

-  BUS PLATFORM
-  ADA RAMP
-  PROPOSED R/W
-  RETAINING WALL



**PRELIMINARY**

 11241 Willows Road NE, Suite 200 Redmond, WA 98052 425.822.4446 www.otak.com	 Transportation Engineering NorthWest Transportation Planning   Design   Traffic Impact & Operations 11400 SE 8th Street, Suite 200, Bellevue, WA 98004   Office (425) 889-6747 Project Contact: Chris Bicket, P.E. Phone: 425-250-5002	<b>6TH STREET SOUTH (108TH AVE NE) KIRKLAND, WA</b>	SHEET <b>7</b>
		<b>CONCEPTUAL NORTHBOUND BAT LANE LAYOUT</b>	OF <b>7</b>