

CITY OF KIRKLAND

123 FIFTH AVENUE • KIRKLAND, WASHINGTON 98033-6189 • (425) 587-3800

DEPARTMENT OF PUBLIC WORKS PRE-APPROVED PLANS POLICY

Policy R-41 Parking Sensor Replacement

The goal of this policy is to establish the procedure for replacement of any parking sensor used by the City that is removed, damaged, or otherwise rendered inoperable through construction activities.

Sensors that are removed, damaged, or otherwise rendered inoperable due to work in the public right-of-way or listed parking lots by a Project (private development, utility work, CIP project, or similar), the replacement cost will be covered by the Project. **Replacement cost includes new sensor equipment, installation, and other appurtenances required for a full installation.** Installation is performed by a sensor vendor who is contracted with the City of Kirkland. Once parking sensors are removed from the pavement, they cannot be reused.

To coordinate parking sensor replacement, please contact the project inspector or the Public Works Department at (425) 587-3800.

Locations

Parking sensors are installed in on-street parking stalls, on-street loading zones, within the two City of Kirkland paid public parking lots located in the Central Business District, and two Parks Department parking lots. The locations of these facilities are listed below.

Paid Public Parking Lots:

- Lakeshore Plaza & adjacent Auxiliary lot
- Lake & Central lot

Parks Department lots:

- Houghton Beach Park lot
- Marsh Park lot

Approximate locations of on-street and loading zone parking sensors (as of October 2024) are shown in Figure 1.

It is possible at the time of construction that parking sensors have been added or removed from the on-street parking and loading zone areas. It is the Project's responsibility to verify current location information prior to pavement-disturbing work.

Policy R-41 Parking Sensor Replacement

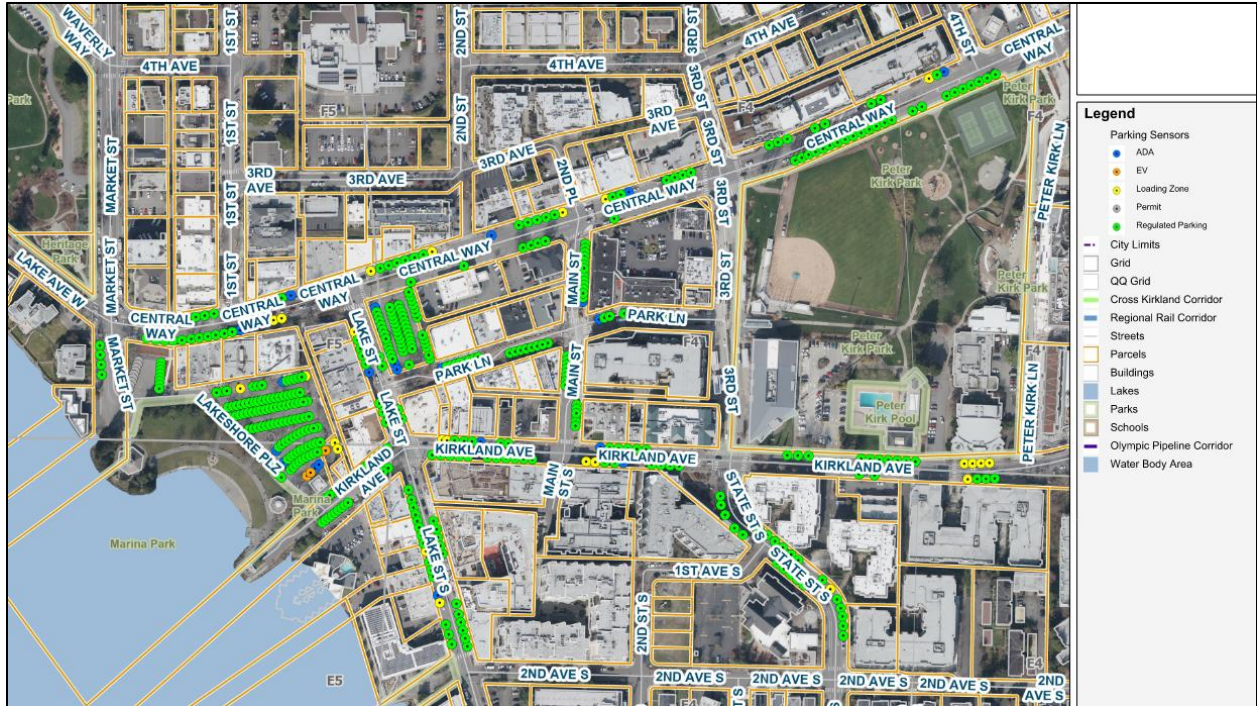


Figure 1 - Approximate locations of parking sensors in the CBD.