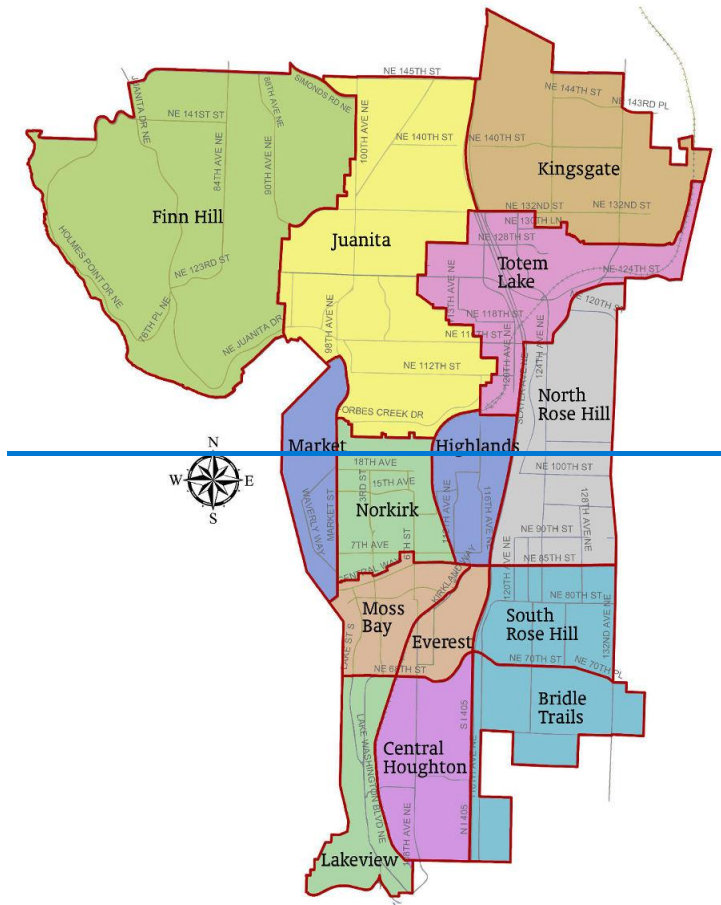


12.O. Totem Lake Business District Plan

DRAFT – Last updated November 27, 2024

1. INTRODUCTION

The Totem Lake Business District is located in the northeastern part of the City, south of the Kingsgate Neighborhood, east of Juanita, and north of North Rose Hill and Highlands. The district encompasses about 1.3 square miles, generally bounded by NE 132nd Street on the north, Slater Avenue and Willows Road on the east, and the boundary created by established [single-family lower intensity](#) residential areas on the south and west. The boundaries of the business district and urban center are very closely aligned.-



-Totem Lake is designated as an [regional](#) “Urban Center.” The Totem Lake Urban Center boundaries incorporate the entire Totem Lake Business District with the exception of the light industry/office area north of NE 124th Street and east of 128th Lane NE and the wetland areas along the center’s western boundary, and the addition of land east of Slater and north of NE 116th Street that is included in the North Rose Hill Neighborhood (See Figure TL-1).

This chapter addresses goals and policies for both the business district and the designated urban center. The Urban Center designation was approved by King County in 2003, based on

standards in the adopted Countywide Planning Policies, in recognition of the City's Comprehensive Plan policies directing the majority of the City's employment and housing growth to this area.

The Totem Lake Urban Center is also a designated Regional Growth Center within the Puget Sound Regional Council policy framework. Both the King County Countywide Planning Policies and the PSRC's VISION 204050 envision cities with designated regional centers as playing an important role in shaping future growth patterns through accommodating a significant portion of the region's employment and residential growth. The Totem Lake Urban Center will continue to contribute to the PSRC VISION 2050 goal of attracting 65% of regional population growth and 75% of employment growth to urban centers and high-capacity transit station areas.

Throughout the region, Centers designations are part of a growth management and transportation planning strategy to provide for greater intensity and density in areas of compact development where housing, employment, shopping and other activities are close together in proximity to transit. These centers form the backbone of the transportation network, linking communities to reduce the rate of growth in vehicle miles travelled and greenhouse gas emissions by expanding transportation options. Totem Lake is anchored by the strong employment base at Evergreen Health Medical Center and the Village at Totem Lake is both a city and regional destination. The Totem Lake Transit Center has frequent bus service to nearby Regional Growth Centers such as Greater Downtown (Kirkland), Seattle University Community, Bellevue Downtown, and Redmond Downtown.

This Plan for the Totem Lake Business District ~~will~~ also serves as the plan for the Totem Lake Urban Center, and the general goals and policies contained in this Chapter apply to both geographic areas. Centers plans must conform to the requirements of the Puget Sound Regional Council. Many of those requirements are addressed in this Chapter, while other issues, such as those related to capital facilities, public services and the multi-modal transportation system, are addressed in other Comprehensive Plan elements.

Kirkland has also signed the Growing Transit Communities Compact, providing a commitment to work in partnership with other communities in the Central Puget Sound region to address the objectives of this effort through including strategies in our Comprehensive Plan. This Plan for Totem Lake includes policies aimed at achieving these goals of attracting more residential growth and employment to areas served by high capacity transit, providing affordable housing choices near transit, and increasing access to opportunity for existing and future residents of the community served by high capacity transit.

Totem Lake Business District



Consistent with the Comprehensive Plan planning period this plan for the Totem Lake Business District addresses future land use through ~~2035~~2044. Growth targets for Totem Lake, as required for Regional Growth Centers, are provided in this Chapter. Development capacity for the Totem Lake Urban Center is not time-bound, and therefore, allows levels of development above the growth targets.

The last update to the Totem Lake Business District Plan occurred in ~~2002, adopted by Ordinance 3825, with an update in 2015~~2024 as part of the Citywide Comprehensive Plan update as required by the Growth Management Act (GMA).

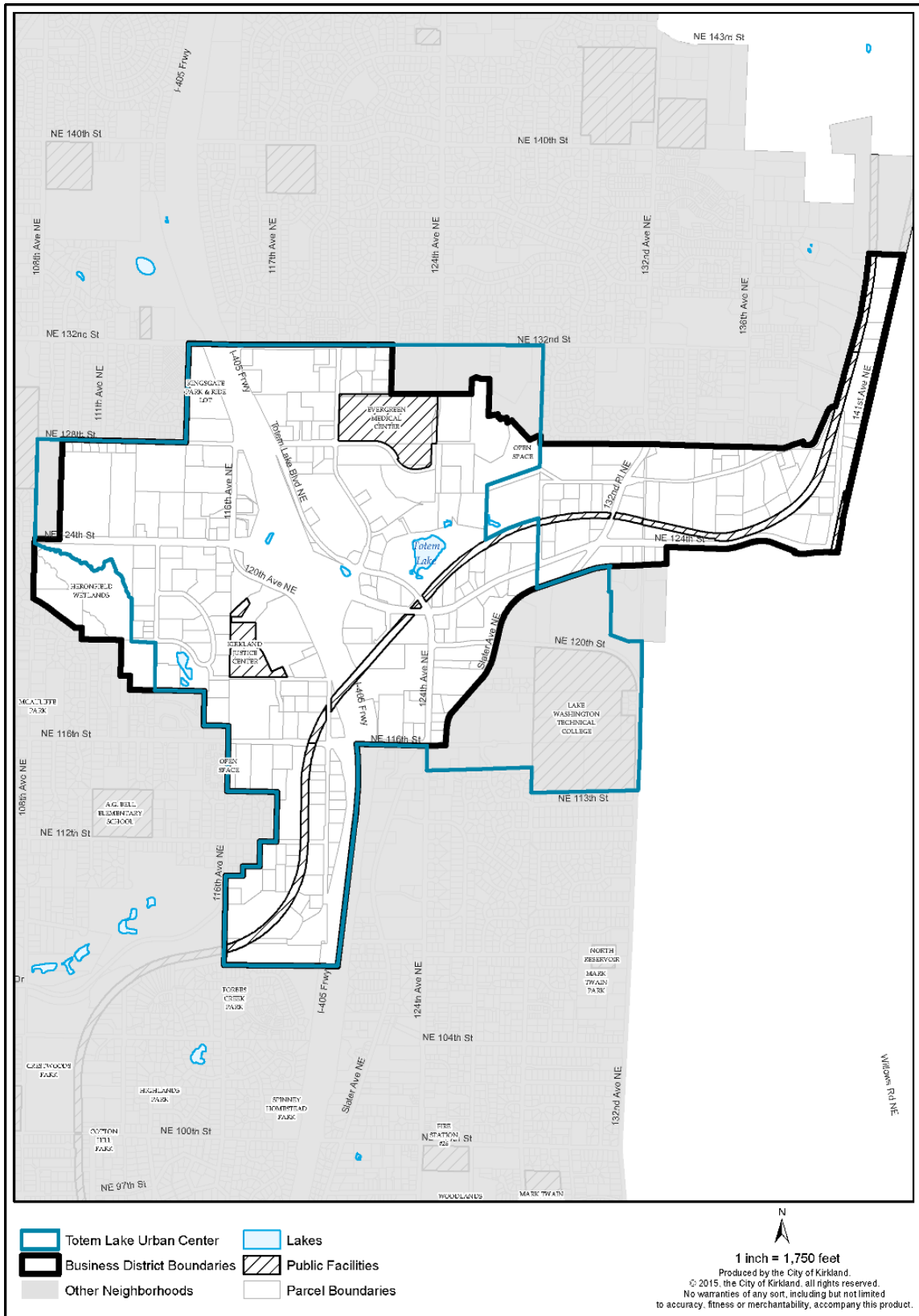
2. VISION STATEMENT

The following Vision Statement reflects what the Totem Lake Business District is envisioned to be at a future time when the goals and policy direction expressed in this plan are realized.

The Totem Lake Business District is a thriving center of residential and commercial activity. The heart of the district is its core area, where the lively ~~Totem Lake Mall~~Village at Totem Lake, Evergreen Health Medical Center, regional transit facilities, and Totem Lake Park are destinations for Kirkland residents as well as many others from the greater region. This central core includes a dense mix of medical, retail, office and housing uses in architecturally ~~attractive~~inviting buildings. Many people ~~live and work here, are~~ drawn to the area by its housing, shopping and employment opportunities, public gathering spaces, and extensive pedestrian amenities including the transformed Cross Kirkland Corridor, providing ~~residents, visitors and employees~~people with transportation options and an extensive urban green space. In addition, public investments in streets and stormwater infrastructure, landscaping, signage, public amenities including park improvements, street furniture and public art contribute to a safe and attractive pedestrian environment. Together, these public and private efforts have contributed to the inviting sense of community.

The Totem Lake business district plays a vital role in the overall Kirkland economy, providing more than a third of the ~~City's~~city's jobs and revenue. Growth in jobs and residential development over the past 20 years has brought new employees and residents who benefit from the district's access to services and connections to a network of trails, sidewalks and transit. Totem Lake serves as a community and subregional center for services, vehicle sales, major destination retail and health care.

Figure TL-1: Totem Lake Business District and Urban Center Boundaries



Subareas within Totem Lake have their own identities. These areas provide a wide array of housing choices, retail activity and services, high tech, light industrial and office uses. The presence of the Lake Washington Institute of Technology [community college](#) within the Urban Center adds both a population of students and the vibrancy of an institution of higher education to the diversity of activities in the area. Residential uses consist primarily of ~~moderate-density and high-density multifamily~~ [more intensive, larger-scale](#) development, providing an important source of housing affordable to a range of income groups in a highly desirable locale. Employment opportunities run the gamut, from small start-up businesses to traditional and flex industrial uses, to high tech medical uses, and retail, auto sales and office employment. Together, this rich mix of uses provides a strong and stable source of housing and employment opportunities, and a strong tax base for the [city](#) ~~City~~ as a whole.

The business district is designed for people. Prioritization of public investments to Totem Lake has enhanced mobility choices in the district. High capacity transit service and facilities in the core of the business district provide strong regional access to the larger community. Local transit connections, an extensive ~~nonmotorized~~ [network of walking, biking and rolling routes](#), and a local boulevard system all combine to complement and support the regional system.

[Totem Lake Transit Center](#)



The district's natural features have also been the source of catalytic changes for Totem Lake. The Cross Kirkland Corridor has been transformed from a rail corridor to an urban green space and transit corridor. Totem Lake Park, in addition to providing an opportunity for informal and organized play and an inviting [meeting community gathering](#) ~~place for local residents~~, has brought visitors to the area. The park provides a starting point for use of the Cross Kirkland Corridor, and connections to the transformed ~~Totem Lake Mall~~ [Village at Totem Lake](#), other businesses and residential areas and the Evergreen Health Medical Center.

Totem Lake Park Natural Area



In 204435, the Totem Lake Business District has evolved into a lively Urban Center with an appealing mix of residential, commercial, office, high tech and open space uses.

3. GENERAL BUSINESS DISTRICT/URBAN CENTER GOALS AND POLICIES

This plan for the Totem Lake Urban Center and Totem Lake Business District contains general goals and policies that apply throughout Totem Lake, with the overall goal to enhance the quality of life for all people who ~~live, work or~~ spend leisure time in the district. Five distinct geographic areas exist within the Center however, each with unique conditions and opportunities. Additional goals and policies that apply in these subareas follow the general topic sections.

4. LAND USE

Totem Lake is Kirkland’s primary center of activity, providing, ~~in 2015, a third of the~~ a significant amount of the City’s jobs and sales tax revenue. Over the next 20 years, the Totem Lake Urban Center is expected to continue to attract growth in housing and employment. The land use policies provided in this Plan will guide development to serve the needs and desires of existing and future residents and businesses, while ensuring that the change over time enhances ~~the character of~~ the district. Specific land use designations for the Totem Lake Business District and Urban Center are illustrated in Figure TL-2.

Goal TL-1: Plan to accommodate residential and employment growth in the Totem Lake Urban Center through the year 2035-2044 as shown below:

Table TL-1: Totem Lake Urban Center Existing and Future Growth

	<u>Existing (2020)</u>	<u>Planned (2044)</u>
Residents		
Acres	842	
Housing Dwelling Units	5,021	9,4217,147
Residential Density (units/gross acre)	5.96	11.18.49
Employees	14,8767	21,3862,418
Employee Density (jobs/gross acre)	17.767	25.36.63

Policy TL-1.1: Ensure that new development meets minimum development intensity thresholds required within the Urban Center.

Minimum thresholds for development intensity are established within the core of the Urban Center, to ensure that employment and housing growth will help the center achieve the desired levels of jobs and housing units. The levels are set forth in the form of minimum Floor Area Ratios (FARs) for commercial development, and minimum densities for residential development. Generous height limits are provided, and no limits to residential densities or commercial FARs are imposed.

Policy TL-1.2: Support the Urban Center as a primary location for added growth to foster a vibrant ~~mixed-use~~ mixed-use environment in the day and evening.

Policy TL-1.3: The City should consider partnering with King County on a regional Transfer of Development Rights (TDR) effort.

In 2013, the City studied the feasibility of developing a Transfer of Development Rights (TDR) program within the Totem Lake Urban Center, as a possible additional technique to support the vision for higher levels and densities of population, housing employment and activity within the Center (see Glossary, Appendix A).

If the City determines that a TDR program would be an effective way to achieve desired growth in the Urban Center, the City should enter into an interlocal agreement (ILA) with King County.

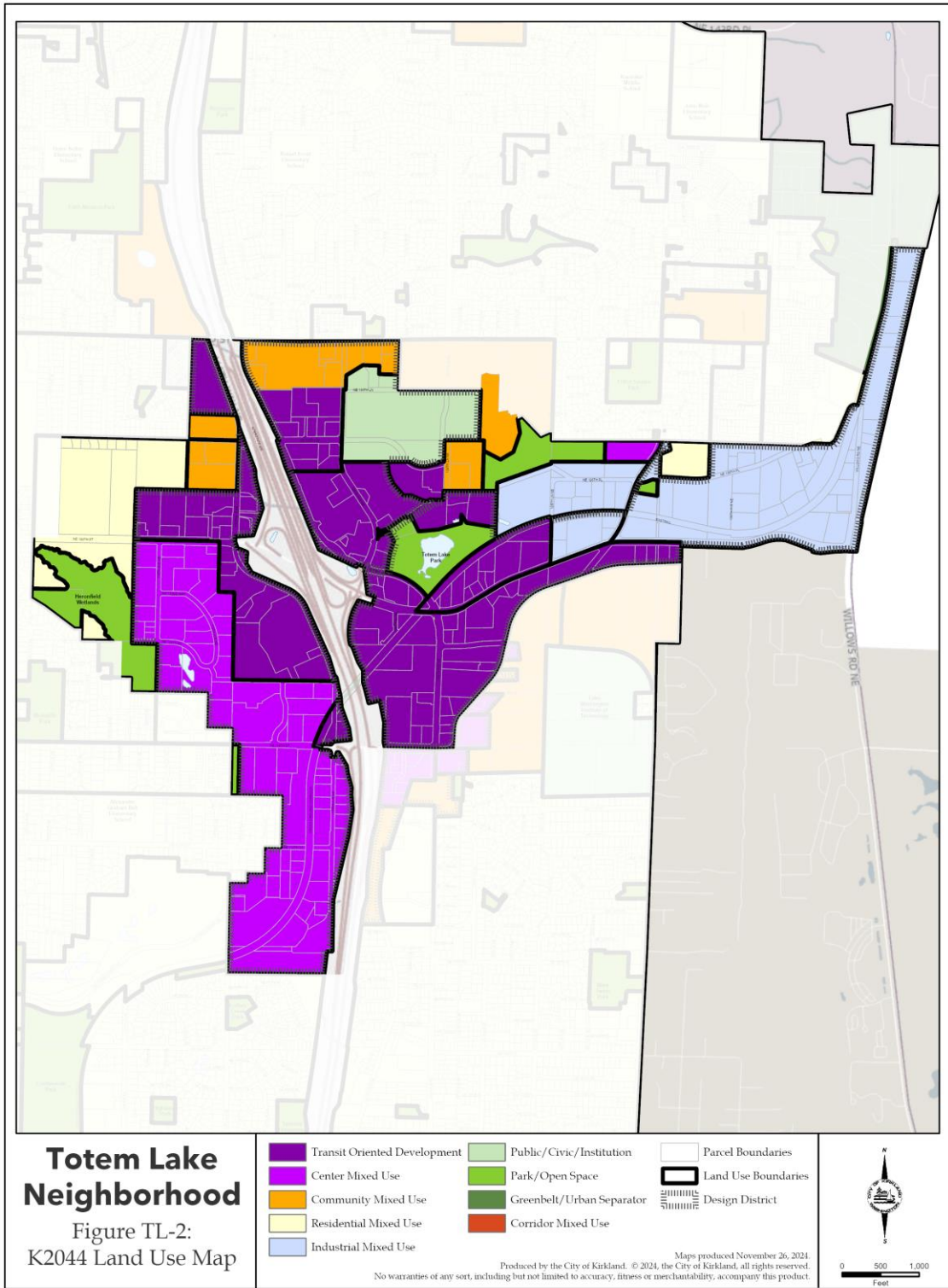
The ILA should require King County to provide the City with funding for public improvements in the Totem Lake Business District, as allowed through legislation enacted in 2011, if increased development capacity is allowed through TDR.

Goal TL-2: Plan for a land use pattern that promotes a dense urban core in the business district and healthy commercial and residential areas in other parts of the Urban Center.

Policy TL-2.1: Provide for increased intensity of development in the core of the Business District.

Development standards should continue to direct the most intensive commercial development to the core of the business district. The area is home to Evergreen Health Medical Center, the City's largest employer, a regional transit center and the ~~Totem Lake Mall~~[Village at Totem Lake](#). The greatest building height allowances in the Urban Center are established for the core to support its evolution to a compact, pedestrian-oriented hub with strong connections to transit, employment, housing and amenities. See also Business District Core subarea policies (see page 34).

Figure TL-2: Totem Lake Business District Land Use Map



Policy TL-2.2: Strengthen existing and developing commercial areas outside of the core area.

Outside of the district's core, established retail areas are located around the I-405/NE 124th Street interchange and extend to the east and west along NE 124th Street, to the north and south along 120th Avenue NE and along both sides of 124th Avenue NE (see Figure TL-2).

Office uses are concentrated on the west side of I-405, although smaller office clusters also exist within retail and light industry/office areas. Light industrial uses remain within areas designated for office, such as TL 10C, TL 10D and TL 10E. A mix of commercial and industrial uses are also located north of NE 124th Street and east of 124th Avenue NE.

These established retail and commercial areas provide a range of employment opportunities and services and contribute to the City's retail sales tax revenue for a healthy economy. These uses should be strengthened through regulations and incentives aimed at allowing for flexibility in expansion and redevelopment, as well as through efforts to reduce conflicts with ~~incompatible~~ other uses.

Policy TL-2.3: Support light industry/office uses through preventing ~~conflicts with~~ adverse impacts to residential uses by restricting housing to locations where access, noise and other potential impacts from industrial use would be limited.

Both light industry/office and residential uses benefit from locations that allow these uses to flourish and protect them from impacts or needs of incompatible uses. Where residential uses are allowed in or adjacent to light industry/office areas, these uses should be located or designed so that traffic and other impacts of the light industrial uses do not conflict with the living environment.

In areas where land use objectives primarily support residential use, standards should protect these uses from the impacts of nearby light industry/office uses. Where preservation or development of light industry/office use is desired, these uses should be supported through measures aimed at reducing conflicts with residential uses. For example, efforts to provide notice to residential developers or future residents that they may experience impacts from light industrial uses prior to their decision to locate within the industrial area should be explored.

Policy TL-2.4: Promote development that is ~~compatible with~~ supportive of and complementary to the Cross Kirkland Corridor and Eastside Rail Corridor.

The Cross Kirkland Corridor and Eastside Rail Corridor provide unique benefits to the Totem Lake Business District. The Cross Kirkland Corridor runs from the district's southernmost corner to connect with the Eastside Rail Corridor where it continues east to its northernmost corner along the City's eastern boundary. In addition to future transit and connectivity advantages the corridor brings to the district, it also provides opportunities for ~~varying compatible~~ land uses to take advantage of both the open space it provides and commercial activity it may help support. The types of uses and design of structures along the corridor should be sensitive to the corridor's use as ~~pedestrian/bicycle~~ clean active transportation, multimodal trail, while allowing for adaptation for future transit-oriented development in the longer term.



5. ECONOMIC DEVELOPMENT

This section provides policy direction regarding economic development in the Totem Lake Business District and applies to land throughout the Business District and Urban Center. Broad Citywide economic development policies are found in the Economic Development Element. Those policies, while not repeated here, are applicable to the Totem Lake Business District.

The Totem Lake Business District is a vital employment, retail and service center that serves the City of Kirkland and surrounding region. The Totem Lake Business District is the City's largest employment center and the City's leader in retail sales. The business district contains regional-serving retail with large footprints such as vehicle dealerships and grocery stores (Fred Meyer, Trader Joe's, Whole Foods, and QFC), and the largest concentration of smaller-scale retail is at the Village at Totem Lake retail center. The business district is anchored by the strong employment base of the Evergreen Medical Center. The business district contains the City's only-first Urban Center, designated by the Growth Management Planning Council in 2003.

The policies in this section are intended to support and strengthen the economic environment in the Totem Lake Business District. A healthy economy provides employment and helps pay for basic public services such as parks, transportation, police and fire protection and human services. The policies encourage a mix of retail, office, service, residential and light industry/office uses, calling for intensive development where supported by public services, and collaboration between the public and private sectors.

Goal TL-3: Strengthen the role of the Totem Lake Business District as a community and regional center for housing, retail, health care, vehicle sales, light industry and office employment.

Policy TL-3.1: Support the growth and retention of commercial activity in the business district.

The Totem Lake Business District is an economic engine for the City. The district has healthy retail and office areas as well as tremendous potential for growth. Public efforts should nurture and support existing uses as well as new growth. Public support can be provided through appropriate levels of public infrastructure (as defined in the Capital Facilities Element), a streamlined efficient regulatory review process, development standards that encourage high quality development, designation of sufficient land for commercial development and a variety of other mechanisms. All of these measures should be developed to support commercial activity in the business district.

Policy TL-3.2: Plan for economic activity that creates new jobs and increases the diversity of employment in the business district.

Land dedicated to economic development activities is a valuable resource that should be preserved and used as efficiently as possible. A complementary supply of retail, office and light industry/office land in the business district ensures diverse economic opportunities and will sustain future economic growth.

In addition, businesses that provide primary jobs (those that produce products or services sold outside of the community) should be encouraged. Primary jobs generally pay higher than average wages, stimulating consumer spending and increasing the opportunity for Kirkland's workers to live within the community. These "basic industries" provide positive multiplier effects

on the economy, through the sale of goods outside the region and by bringing new capital into the local economy.

Technology Facility



Policy TL-3.3: Incorporate flexibility in regulations to encourage creative proposals consistent with Urban Center policies.

With the rate of innovation moving more and more quickly, it is important that policies not foreclose on opportunities that are not yet apparent. Many of the businesses in Totem Lake, particularly aerospace, medical device and interactive media, are part of regional business clusters that extend to neighboring communities. Consideration of the sustainability and growth of these larger business clusters should guide planning decisions in Totem Lake.

Policy TL-3.4: Limit uses that do not contribute to a dense and vibrant urban environment within the Urban Center.

Low [density-intensity](#) uses such as retail storage facilities occupy large amounts of land. These uses do not contribute to the dense, economically vibrant vision for Totem Lake and should be located outside of the Urban Center.

Policy TL-3.5: Strengthen the district's light industry/office areas through supporting expansion of existing uses and welcoming redevelopment of these uses, while enabling them to evolve into innovative centers for commerce and employment.

Goal TL-4: Establish and support incentives to encourage automobile and other vehicle dealerships within appropriate areas of the business district.

Policy TL-4.1: Provide flexibility in development standards while maintaining an inviting [visual-aesthetic](#) environment.

Vehicle sales uses seek to maximize visibility and efficiency in the display and storage of inventory. Flexible development standards that assist vehicle dealers in these goals without compromising the [visual-active, pedestrian-friendly](#) character of the area should be considered in development [standards-regulations](#) and design guidelines for these uses. Where parking areas are located near gateways identified in this Plan, special attention to visual impacts is important. Parking areas should be appropriately landscaped so they do not detract from efforts to provide a welcoming and [attractive-vibrant](#) entrance to the business district.

Car Dealership



Policy TL-4.2: Assist existing and prospective vehicle dealers through a variety of means.

Because vehicle sales and service uses typically have unique spatial and visibility needs, these uses may require special assistance to ensure their continued viability in the City. Zoning and regulatory measures should be considered to remove obstacles to development and increase flexibility in development standards. When warranted by a clear public interest and benefit, the City should provide technical assistance in identification of sites or by facilitating business-to-business communication efforts.

6. ENVIRONMENT, PARKS AND OPEN SPACE

This section provides policy direction regarding the natural environment, [parks, and open space](#) in the Totem Lake Business District. Broad Citywide policies and standards for development regarding environmental quality, natural amenity and function, environmental hazards and stormwater management are found in the [Sustainability, Climate, and Environmental Element- \(Chapter V\)](#). These policies, while not repeated here, are applicable to the Totem Lake Business District.

[The business district contains Totem Lake Park, which is a recreational centerpiece of the Totem Lake Urban Center. The park has an accessible-to-all-abilities playground, a large community picnic table, and a boardwalk trail through part of the wetland that connects to the Cross Kirkland Corridor. The southern portion of the business district lacks walkable access to parks and open space. See the Parks, Recreation and Open Space \(PROS\) Plan walkability gap analysis for more information, policies to improve walkable access to open space, and implementation details. General parks and recreation policies are found in the Parks, Recreation and Open Space Element.](#)

Goal TL-5: Enhance the biological integrity of Juanita Creek and Forbes Creek.

Policy TL-5.1: Enhance the habitat quality of the Juanita Creek corridor.

Juanita Creek and associated wetlands represent the largest continuous wildlife habitat area in the Totem Lake Business District (see Figure TL-3). While a valuable public resource, Juanita Creek has been negatively affected over the years by surrounding development. Impacts include narrow and degraded buffers, habitat fragmentation, degraded water quality, and increased flooding.

The City should initiate and support efforts to enhance the biological integrity of Juanita Creek, such as requirements for improved/enhanced buffers and reduced impervious surface area, partnership with other agencies or interested parties for improvements, acquisition of key areas or other measures.

Policy TL-5.2: Restore the natural Forbes Creek channel through the business district.

Within the Totem Lake Business District, the Forbes Creek channel is culverted, which eliminates opportunities for wildlife habitat. Outside of the business district, open portions of Forbes Creek provide cutthroat trout and Coho salmon habitat. With restoration, it may be possible to re-introduce these species to the Totem Lake Business District portion of the stream.

Rehabilitation of this stream corridor could restore biological health and diversity within the corridor, possibly re-establish a salmon run, and provide a visual amenity. City efforts should include a requirement that adjacent new development/redevelopment open and restore stream segments and/or direct public investment to restore the corridor. Development activity that restores the stream corridor should be allowed to retain development potential that would otherwise have been reduced by stream restoration.

Policy TL-5.3: Coordinate with the Federal Emergency Management Agency to update the floodplain map for the Totem Lake Business District.

Existing floodplain maps indicate that the only area that lies within the 100-year floodplain is Totem Lake. The Federal Emergency Management Agency (FEMA) originally developed these

maps in the 1960s. Due to changes in local topography and stormwater patterns associated with development, these maps may no longer be accurate. The City should seek funding to review and update these maps as needed.

Goal TL-6: Enhance the natural condition and function of Totem Lake.

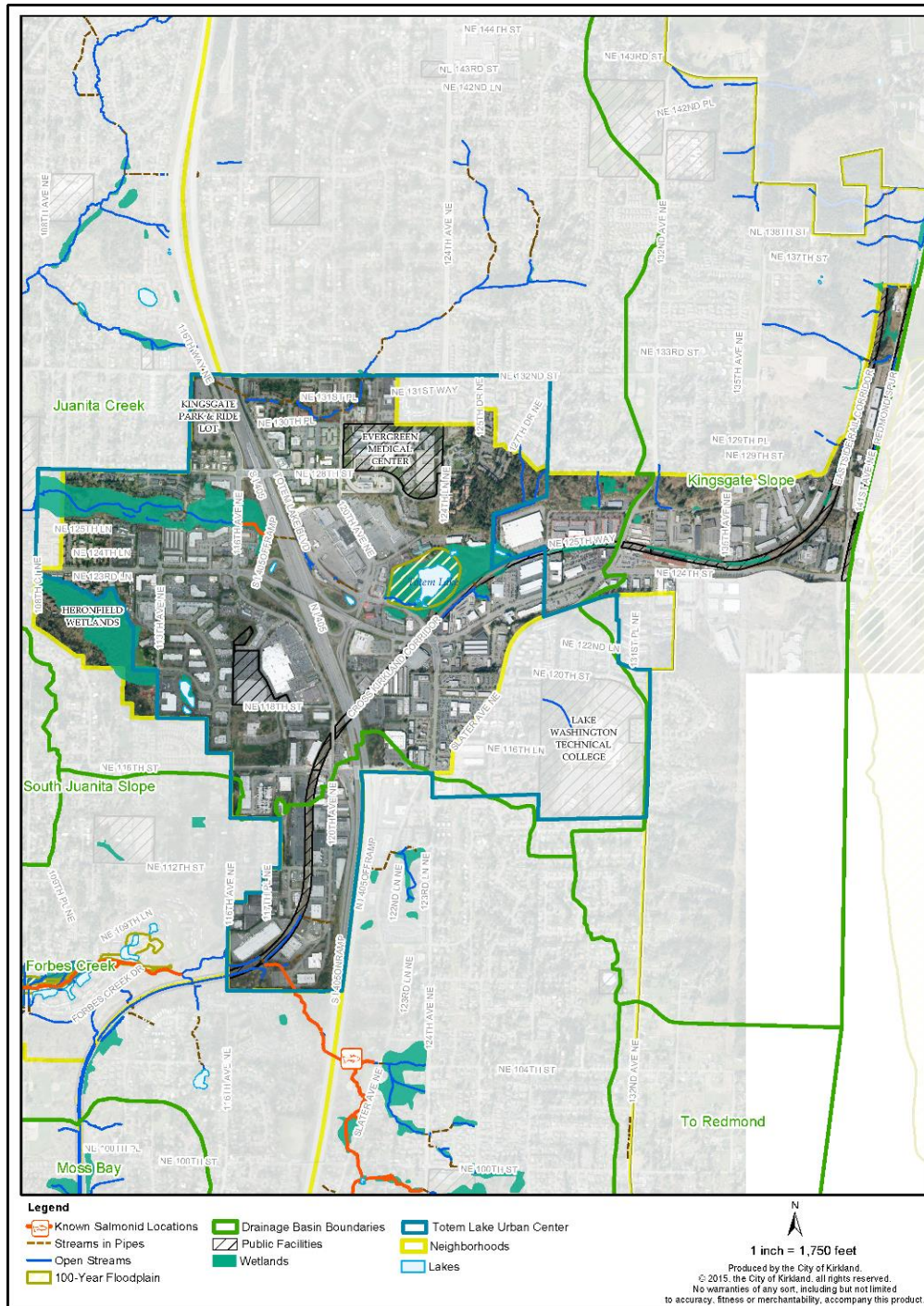
Policy TL-6.1: Work collaboratively with other agencies and groups to improve the habitat value and function of Totem Lake.

Totem Lake and wetlands include forest, shrub, and emergent communities, together with open water. This mix of communities creates a variety of habitat opportunities for wildlife in this headwater area of Juanita Creek. This area is bordered with little buffer area on the west, south and east sides by commercial development, roads and railroad tracks. Wooded slopes to the northeast provide upland area and wetland buffer features lacking along other sides.

Totem Lake is owned by the King Conservation District (KCD), a special purpose district that provides education and technical support on resource conservation issues. The management goals for Totem Lake are to enhance the wildlife habitat and maintain the area for passive recreation. Because the KCD has limited resources, management occurs on an incremental basis, as funds are available.

In cooperation with the KCD and the Eastside Audubon Society, the City of Kirkland conducts regular maintenance to remove trash and remove overgrown vegetation. Future collaboration between the City, the KCD and the Eastside Audubon Society should enhance the overall habitat value and function of Totem Lake.

Figure TL-3: Totem Lake Wetlands, Streams, and Lakes



Policy TL-6.2: Provide opportunities for people to observe and enjoy the wildlife habitat around Totem Lake.

Totem Lake provides valuable urban wildlife habitat, with a wide diversity of birds and other animals. Currently, there is a boardwalk trail through a portion of the wetland that allows visitors to observe a variety of wetland types and wildlife activity, particularly water birds, songbirds and woodpeckers. Increased opportunities for public education and wildlife interpretation at Totem

Lake, while protecting the natural system, could increase public appreciation and stewardship of this valuable resource.

Totem Lake



Policy TL-6.3: The City should ~~acquire~~ maintain Totem Lake ~~and develop~~ park improvements as identified in the Totem Lake Park Master Plan.

To ensure that the quality of Totem Lake and its buffers are preserved through regular maintenance, the City ~~should seek to~~ has acquired and manages this natural resource. The 2013 Totem Lake Park Master Plan identifies improvements that can be made to enhance ecological function, increase opportunities for environmental education and interpretation, and better connect the park to the surrounding business and residential communities and to the adjacent Cross Kirkland Corridor. The City should continue to implement the park master plan.

Excerpt from the Totem Lake Park Master Plan



Policy TL-6.4: Work with other agencies and the public to improve water quality.

The water bodies in the Totem Lake Business District are generally rated as “fair” to “good.” All, however, have been routinely diagnosed with such water quality problems as high fecal coliform, low dissolved oxygen and high temperatures. Runoff from streets, parking lots and yards is a major contributor to water quality problems. The City should address water quality issues in accordance with the 2014 Surface Water Master Plan.

Goal TL-7: Establish a green corridor extending in an east/west direction from the hillside northeast of Totem Lake and extending along the Juanita Creek corridor.

Policy TL-7.1: Create a public green corridor as shown in Figure TL-10.

Green corridors offer a mechanism to link the community's cultural, historic, recreational and conservation needs. The term "green corridor" combines the concepts of greenbelt and parkway: providing the separation and ecological functions of a greenbelt and the linear and connective orientation of a parkway. Green corridors help to preserve natural areas, habitat, and stream corridors and provide open space within developed areas. With their emphasis on connectivity, green corridors support wildlife by creating corridors and providing buffers from roadways and other incompatible uses.

In the Totem Lake Business District, a new public green corridor should extend from the steep slope in the eastern portion of the district, through Totem Lake and the Juanita Creek corridor to the western edge of the district (see Figure TL-10). The green corridor would encompass many of the Juanita Creek Basin wetlands on the north side of NE 124th Street (see Figure TL-3). These wetlands include both small, isolated features and large wetlands, such as those along Juanita Creek. Currently, these features provide significant wildlife refuge opportunities, limited primarily by fragmentation. Their wildlife function would be greatly expanded with a green corridor that provides a continuous travel route.

Public and private landscape improvements to the area between Totem Lake on the east side of I-405 and Juanita Creek on the west side of I-405, should be incorporated into the green corridor to provide a continuous corridor through the business district.

Policy TL-7.2: In landscaped areas of the green corridor, encourage landscape materials that complement adjoining natural areas.

Certain portions of the green corridor, particularly extending west from Totem Lake and across I-405 to the Juanita Creek corridor, should be landscaped to provide a continuous green path through the business district. To the extent possible, these areas should be landscaped with materials that complement the natural areas of the green corridor and continue the appearance of a natural green corridor.

Policy TL-7.3: In natural areas of the green corridor, maintain the natural vegetation to the greatest extent possible.

Within the natural areas of the green corridor, natural vegetation, wildlife habitat and stream corridors should be maintained to the greatest extent possible. This may include management to replace invasive non-native plants with native vegetation. This will enhance the overall habitat and stormwater control function of these areas.

High and moderate landslide areas are located throughout the Totem Lake Business District. Primary areas at risk for landslide include the slope northeast of Totem Lake, the slope south and west of the Heronfield wetlands, Welcome Hill, and isolated areas in the South Industrial-Commercial Subarea and along the north side of Juanita Creek (see Figure TL-4a). Seismic soils are located primarily in low-lying soft soil areas around Totem Lake, along Juanita Creek and around the Heronfield wetlands. Currently, the only 100-year floodplain in the Totem Lake Business District is located around Totem Lake. Policies in this section provide general guidance regarding these features.

Goal TL-8: Protect potentially hazardous areas, such as landslide, seismic and flood areas, through limitations on development and maintenance of existing vegetation.

Policy TL-8.1: Maintain existing vegetation in high or moderate landslide areas.

In all landslide areas, most of the existing vegetation should be preserved in order to help stabilize the slopes as well as maintain natural drainage patterns. In particular, areas with significant existing vegetation, such as the wooded ridge along NE 116th Street and the hillside northeast of Totem Lake (Figure TL-4a), should retain vegetative cover to the maximum extent possible.

Goal TL-9: Acquire and develop community facilities, such as a neighborhood park and community center.

Policy TL-9.1: Establish an open space network.

The network should include open space, a neighborhood park, and pedestrian corridors. Park and open space facilities should be sized and designed to meet the needs of shoppers and those who live and work in the area. The facilities should include at least one place to gather, rest, eat and engage in informal recreation. Trees and plants should be provided for shade and relief.

Figure TL-4a: Totem Lake Landslide Susceptibility

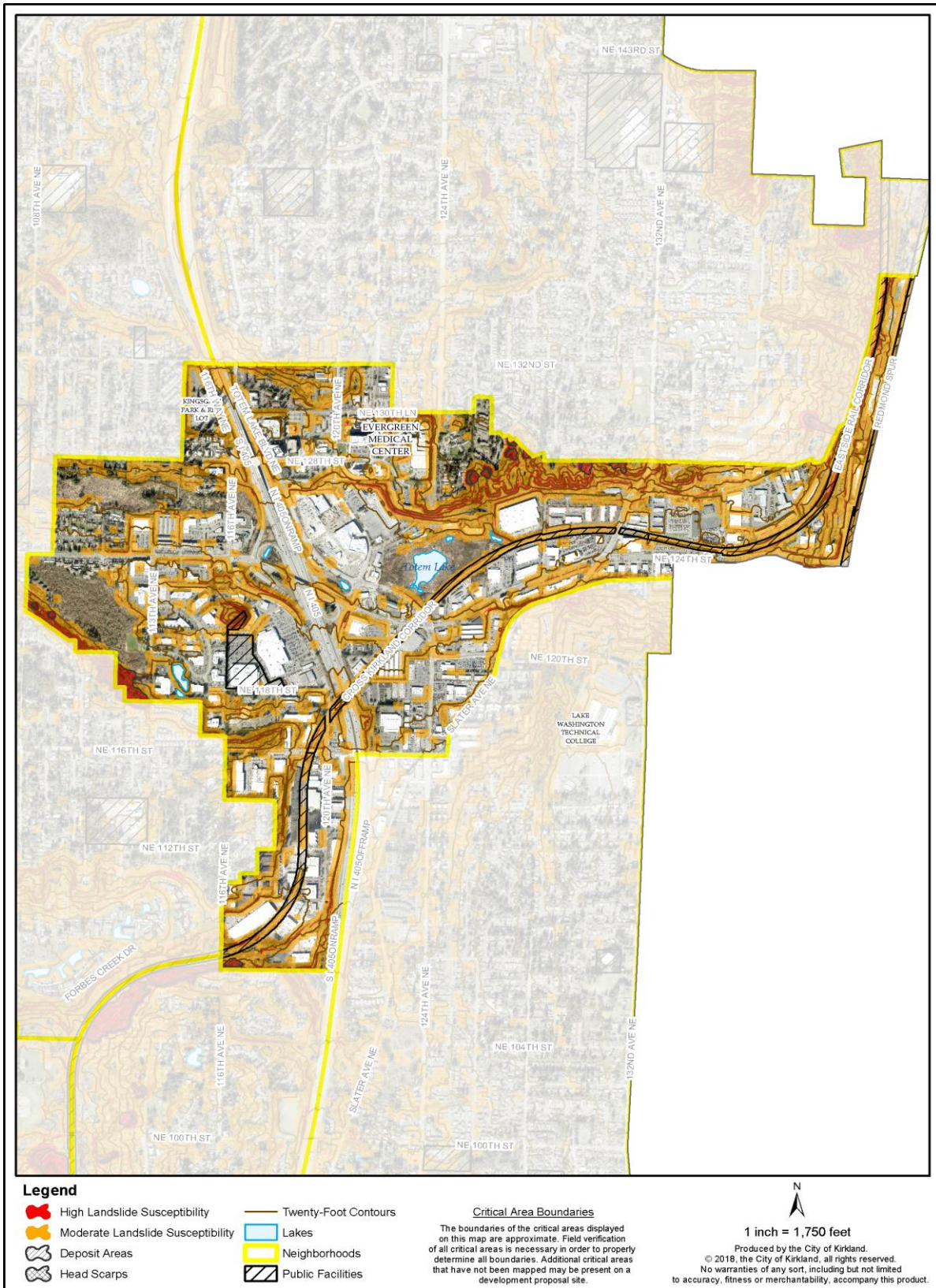
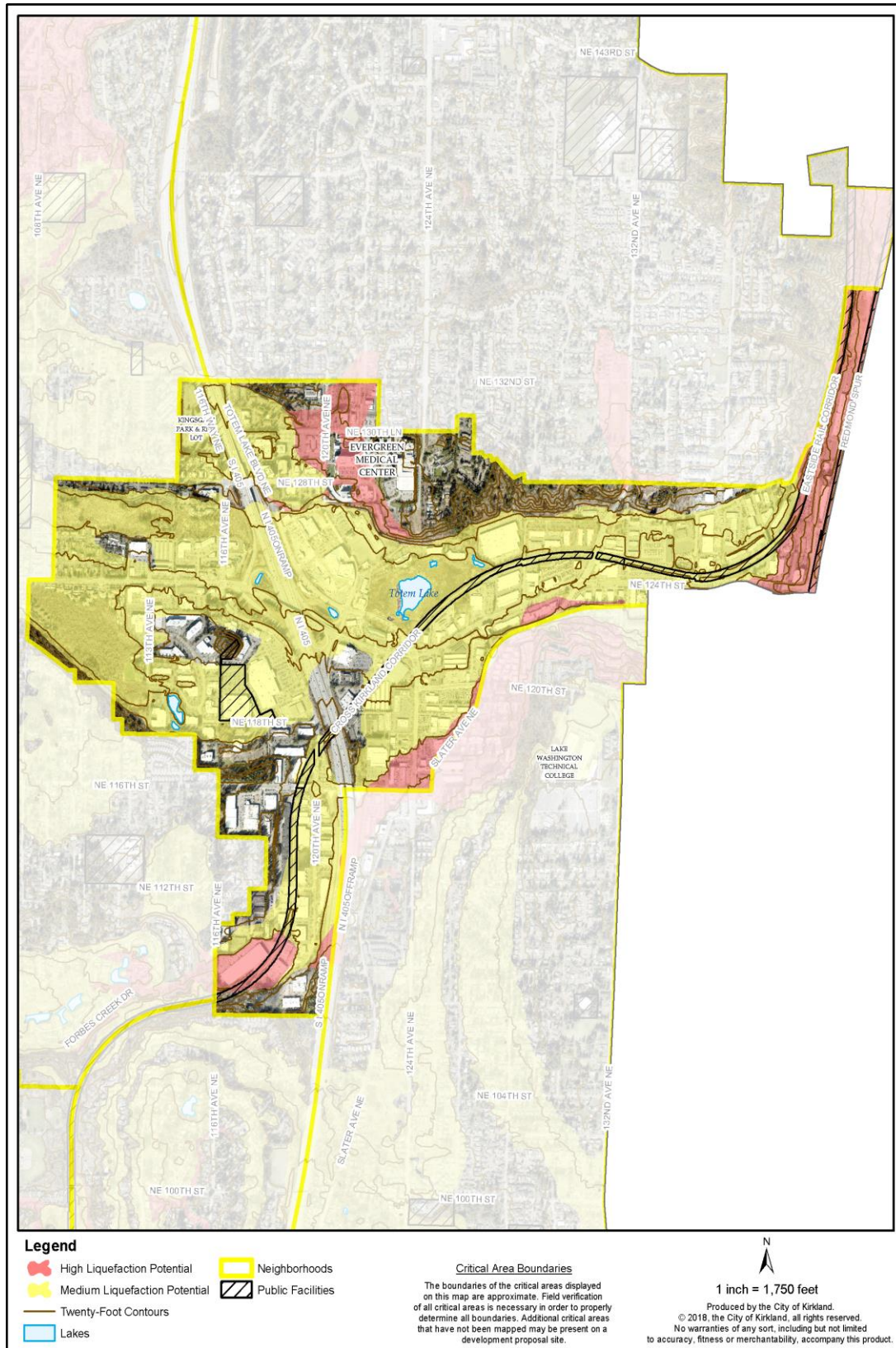


Figure TL-4b: Totem Lake Liquefaction Potential



Policy TL-9.2: Public/private partnerships should be encouraged to provide additional parks, open space and pedestrian corridors.

Future intensive residential, office and retail development particularly in the core of the business district will increase the demand for parks, open space and pedestrian corridors. New development will also provide increased opportunity for acquiring and integrating open space amenities into the development pattern. The City should seek opportunities to work in partnership with private development to create public open spaces in the business district that benefit public and private interests. The ~~Park Recreation and Open Space~~PROS Plan has identified the need for further improvements in Totem Lake (see the PROS Plan for further details).

Policy TL-9.3: Support the creation of community centered functions and activities.

New community-oriented facilities in the Business District Core would provide recreation space that is highly in demand, increase activity levels in the area and provide a magnet for future private development. A new public facility, such as a community and recreation center, or the provision of space for these functions through private development would be a significant contribution to the future of the core area. Incentives for the development of community-oriented facilities through private development should be implemented.

Examples of program activities that might occur at a community center would include those that would support increased awareness and stewardship of the Totem Lake wetlands, individual and family health and fitness activities, and other community activities that complement plan goals for the Business District Core and the Totem Lake Business District as a whole.

Goal TL-10: Maximize opportunities provided by the Cross Kirkland Corridor for new parks, open spaces and recreational activities in Totem Lake.

Policy TL-10.1: Ensure when new development, redevelopment or exterior remodeling occurs adjacent to the Cross Kirkland Corridor that the building and site features integrate with the corridor to create active and engaging spaces for corridor users.

The former rail corridor, now known as the Cross Kirkland Corridor (CKC) where it is under Kirkland ownership to 132nd Avenue NE, and as the ~~Eastside Rail Corridor~~Eastrail to points east and north, runs diagonally through the Totem Lake Business District. Opportunities for recreation and connection presented by this swath of open space should be maximized by neighboring properties, consistent with the objectives established in the PROS Plan and ~~2014~~CKC Master Plan.

7. PUBLIC SERVICES AND FACILITIES

The City of Kirkland and other agencies provide a wide range of public services and facilities to serve residents and workers in the Totem Lake Business District. Policy direction for these services is provided in three functional elements of the Comprehensive Plan: Public Services, Utilities and Capital Facilities. These policies, while not repeated here, are applicable to the Totem Lake Business District. The goals and policies provided below address specific public service issues unique to the Totem Lake Business District.

Goal TL-11: Prioritize available infrastructure funding to projects within Totem Lake to support its development at Urban Center densities.

Policy TL-11.1: Coordinate with developers to provide required flow control and water quality treatment in the most efficient and cost-effective manner.

Policy TL-11.2: Provide stormwater management facilities to serve untreated and uncontrolled runoff from already developed impervious surfaces.

Policy TL-11.3: Evaluate opportunities for regional approaches to provide stormwater management facilities and provide incentives to property owners to partner with the City to site these facilities.

Policy TL-11.4: Reduce the overall rate and volume of stormwater runoff during peak storm periods.

Much of the development in the Totem Lake Business District contains extensive impervious surface area. This style of development has contributed to unusually high rates of runoff to streams and wetlands during peak storm periods. As the rate and volume of stormwater runoff increases, water quality decreases, the potential for severe floods increases and flood peaks are extended.

Public and private measures, such as provision of public funds for improved stormwater detention facilities to handle existing development levels, and revised development standards to reduce impervious surface area, expand buffers/vegetated areas, and increase detention standards, will contribute to the reduction of stormwater flows.

8. TRANSPORTATION

The Transportation Element of this Comprehensive Plan provides a transportation concept for the City of Kirkland that supports a system which promotes all viable forms of transportation, ensures consistency between land use and transportation planning, ensures sustainability in the system, and emphasizes the development and maintenance of partnerships locally, regionally and nationally to further transportation goals. The Transportation Element provides specific goals and policies that support the development of a multimodal transportation system in Totem Lake.

The Totem Lake Connector pedestrian bridge was completed in 2023 and is an important addition to the City’s off-street transportation infrastructure. The Connector was aptly named due to its presence as the connecting piece between two portions of the Cross Kirkland Corridor that were previously divided by a major intersection. The Connector is an important active transportation connection that links the city’s active transportation network to provide a safe, convenient option for walking, biking, and rolling trips to the rest of Kirkland and beyond.

The concentration of economic activity in the Totem Lake Business District and Urban Center requires an efficient transportation system. As the Urban Center transitions from a largely auto-oriented district to one that relies on a range of modes to support increased density growth, this transportation system should emphasize multiple and promote all modes of transportation, with improved pedestrian access to transit hubs by walking, and bicycling, and rolling access. The City should take advantage of the funding priority given to regionally designated Urban Centers to seek grants for funding transportation improvements.

Goal TL-12: Strive to achieve, by 2035, a non-single occupancy vehicle mode share of 60 percent for peak period trips in the Totem Lake Urban Center.

An ambitious mode split may be achieved within the Urban Center through a number of measures supported by this Plan. These include the creation of transit- and pedestrian-supportive land uses and infrastructure, the provision of expanded transit options and enhanced transportation demand strategies, incentives for travel by high occupancy vehicle(2+HOV), and the implementation of a parking management strategy. The table below provides goals for the mode split to be achieved.

Table TL-2: Totem Lake Mode Split

	<u>Mode Split - Peak Hour—All Trip Types</u>		
Mode	<u>2024 PSRCBKR</u>	2035 Estimate	2035 Aspirational Target
<u>Drive AloneSOV</u>	<u>5855%</u>	45%	40%
<u>Carpool (2+)HOV</u>	<u>538%</u>	39%	40%
Transit	<u>104%</u>	7%	10%
Walk & Bike	<u>43%</u>	9%	10%
	100%	100%	100%

Goal TL-13: Provide mobility within the business district through maximizing the efficiency and safety of the existing road network and making strategic investments in intersections and street capacity to support planned land use.

The district has an established network of streets that serve vehicular needs. I-405 provides regional access to the business district. Principal arterials (NE 124th Street, 124th Avenue NE) connect Totem Lake with other regional locations such as Bellevue and Redmond. Minor arterials (NE 116th Street, Totem Lake Boulevard, 132nd Avenue NE, NE 132nd Street, NE 120th Street) provide connections between principal arterials and serve as key circulation routes within the district. Collector streets distribute traffic from the arterials to local streets, giving access to individual properties (see Figure TL-5).

Policy TL-13.1: Maximize efficiency of the existing transportation network.

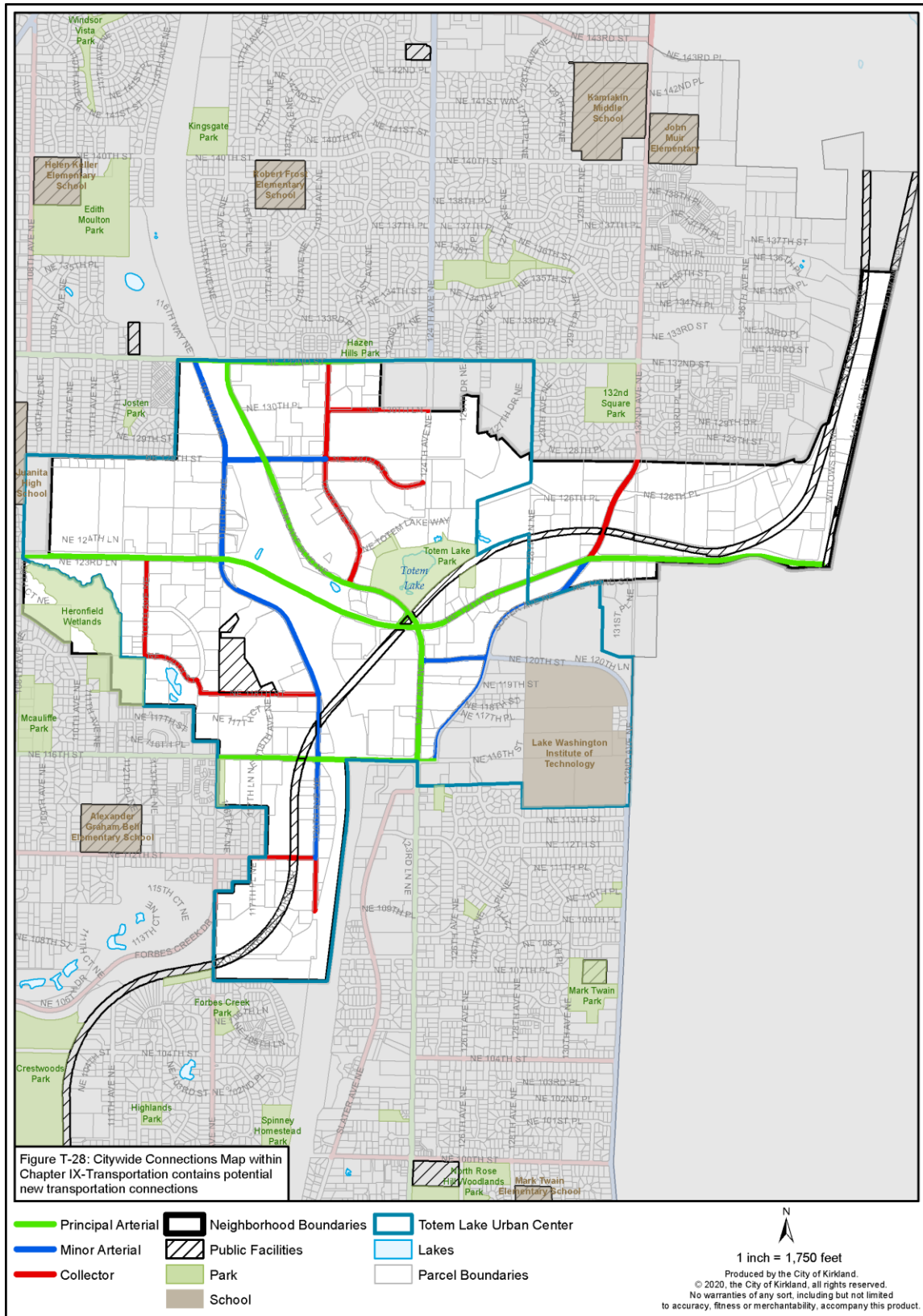
Many low-cost traffic management strategies can be employed to maximize the efficiency and improve the safety of the existing transportation network. Intelligent Transportation Systems (ITS), for example, maximize the efficiency of the existing transportation system and can improve mobility through techniques such as transit priority signalization. Other measures to increase the efficiency of existing streets include intersection improvements, on-street parking restrictions, signal timing optimization and left turn channelization. Substantial reductions in congestion from modest intersection improvements that support planned land use may be achieved in some areas, such as NE 132nd Street. Priorities for street improvements are established in the Transportation Element.

Goal TL-14: Support transportation demand management (TDM) measures and improve transit facilities and services.

Policy TL-14.1: Support transportation demand management (TDM) efforts to reduce trip demand and meet goals for non-drive-alone trips in the Urban Center.

TDM seeks to modify travel behavior and encourage economical alternatives to the single-occupant vehicle. The City has ongoing TDM and Commute Trip Reduction (CTR) programs that work with employers to reduce single-occupancy vehicle use and vehicle miles traveled. As discussed in the Transportation Element, innovative approaches should be implemented to improve ridesharing, vanpools and other types of services.

Figure TL-5: Totem Lake Street Classifications



Many components of a successful TDM program could include costs to the City. Financial subsidies to encourage employers to provide vanpools for their employees, or other incentives to reduce the costs of participation for employees are examples of costs the City might incur. The City should seek grant funding for program costs and partnering with transit and other agencies should be promoted.

Policy TL-14.2: Strive to meet the goals established for the Totem Lake Urban Center Growth and Transportation Efficiency Center (GTEC).

The GTEC designation is a voluntary Commute Trip Reduction (CTR) strategy that encourages reduction of Single Occupancy Vehicles (SOV), and Vehicle Miles Traveled (VMT) and reductions in greenhouse gas emissions through efficient use of transportation infrastructure and travel demand management strategies discussed above. The purpose of the GTEC is to increase access to the Urban Center while reducing the number of drive alone trips.

The Transportation [Master Strategic](#) Plan and the City's CTR Plan provide further details on CTR and TDM plans. The goals established for Totem Lake GTEC include a non-SOV rate of 55 percent, and reductions in greenhouse gas emissions and vehicle miles traveled of 28 percent each.

Totem Lake Transit Center



Goal TL-15: Support and promote an improved transit system and access to transit hubs within the Urban Center.

Policy TL-15.1: Work with regional transit agencies to provide a full range of transit service to and within the Totem Lake Urban Center.

Transit service to the Totem Lake Urban Center has improved in recent years, with the completion of the direct access HOV lanes at I-405/NE 128th Street and transit center on the Evergreen Health campus. These projects have improved the speed, reliability and use of regional express transit service in Kirkland and have been an integral part of the plan and vision for the Totem Lake Urban Center. Additional improvements to Metro and Sound Transit service to and from the Urban Center should continue to be encouraged.

Due to the size of the Totem Lake Urban Center, it is important that regional transit effectively serves the entire area. Throughout the Totem Lake Business District, expanded transit service to connect to other Eastside communities, to provide more frequent service during peak hours, and to expand service from the Kingsgate Park-and-Ride lots should be provided. Additional transit shelters and stops should be encouraged, with improved access to transit hubs by

walking, [biking and rolling](#) ~~and bicycling~~ access. Intensive promotion should be sought for implementation of local transit services to Totem Lake residents ~~and~~ businesses [and visitors](#).

In order to promote improved regional service for Totem Lake's residents and employees, the City should support efforts to incorporate High Capacity Transit (HCT) on I-405 and consider appropriate transit on the Cross Kirkland Corridor.

Goal TL-16: Improve local circulation in the Totem Lake Business District.

The Totem Lake Business District has barriers to local circulation including I-405, the Cross Kirkland Corridor, large "superblocks" without internal connections, steep slopes and wetlands. Because of these features, the pattern of local streets can feel circuitous, confusing and inconvenient. The improvements described below would simplify and improve local circulation.

Policy TL-16.1: Create a landscaped boulevard that connects the subareas within the business district.

Although primarily for urban design purposes, the landscaped boulevard would not only connect visually the subareas of the business district around the I-405 interchange at NE 124th Street but could also help local circulation. Creation of the boulevard uses existing rights-of-way such as Totem Lake Boulevard, 120th Avenue NE, NE 128th Street and 116th Avenue NE to the greatest extent possible. In some areas dedication and development of new rights-of-way may be needed. Please refer to the Urban Design policies and Figure TL-10 for the preferred alignment of the boulevard.

Policy TL-16.2: Seek opportunities to create a finer grid of smaller scale streets and new connections within the business district.

The Totem Lake Business District currently has a limited local street system. Development of a complete network of local access roads would facilitate [equitable](#) vehicular, pedestrian and bicycle access to properties, reduce reliance on major arterial routes, and break up large blocks to provide better building orientation to the street and an improved street level environment.

With new development and redevelopment within the business district, the opportunity exists for the dedication of right-of-way to enable the creation of new through connections. General locations for potential new connections are identified in [Figure T-28 in Chapter IX, the Transportation Element of the Comprehensive Plan](#).

Goal TL-17: Improve circulation and access for ~~nonmotorized~~ [nonvehicular](#) modes of transportation.

To provide transportation alternatives to the automobile, safe and convenient paths should be developed for pedestrians, bicycles, scooters, skates and other nonmotorized modes of travel. The Transportation Element and Transportation [Master Strategic](#) Plan provide specific policy direction and actions to support and enhance these modes.

Policy TL-17.1: Develop a safe, integrated on- and off-street [nonmotorized-multimodal](#) system emphasizing connections to schools, parks, transit, the Cross Kirkland Corridor and other parts of Kirkland (Figures TL-7 and TL-8).

The Totem Lake Business District needs many [nonmotorized](#) improvements [to enhance walking, biking and rolling experiences](#), as identified in the City's Active Transportation Plan. These include safe and appropriately scaled [nonmotorized pedestrian](#) access to connect

neighborhoods, and activity and urban centers, with services, transit, and recreation areas. The relationship of the Totem Lake Business District to other neighborhoods, as well as to the Lake Washington Institute of Technology, Juanita Beach, and the Forbes Creek Trail, should be considered in developing regional connections.

Policy TL-17.2: Support development of the Cross Kirkland Corridor as a multipurpose trail with access points along the corridor.

The Cross Kirkland Corridor provides an important recreational opportunity, as well as a north-south bicycle and pedestrian route through much of the Totem Lake Business District. The trail could also be a precursor of a regional transportation facility traveling through the hearts of many Eastside cities. Public pedestrian and bicycle access should be provided for properties adjacent to the Cross Kirkland Corridor consistent with the CKC Master Plan and the PROS Plan.

Policy TL-17.3: Coordinate with neighboring jurisdictions to obtain and develop the extension of the Cross Kirkland Corridor within Kirkland's City limits.

The extension of improvements to the CKC north to Woodinville would enable users of the corridor to travel seamlessly across jurisdictional borders.

Figure TL-6: Totem Lake Planned Streets and Possible New Connections

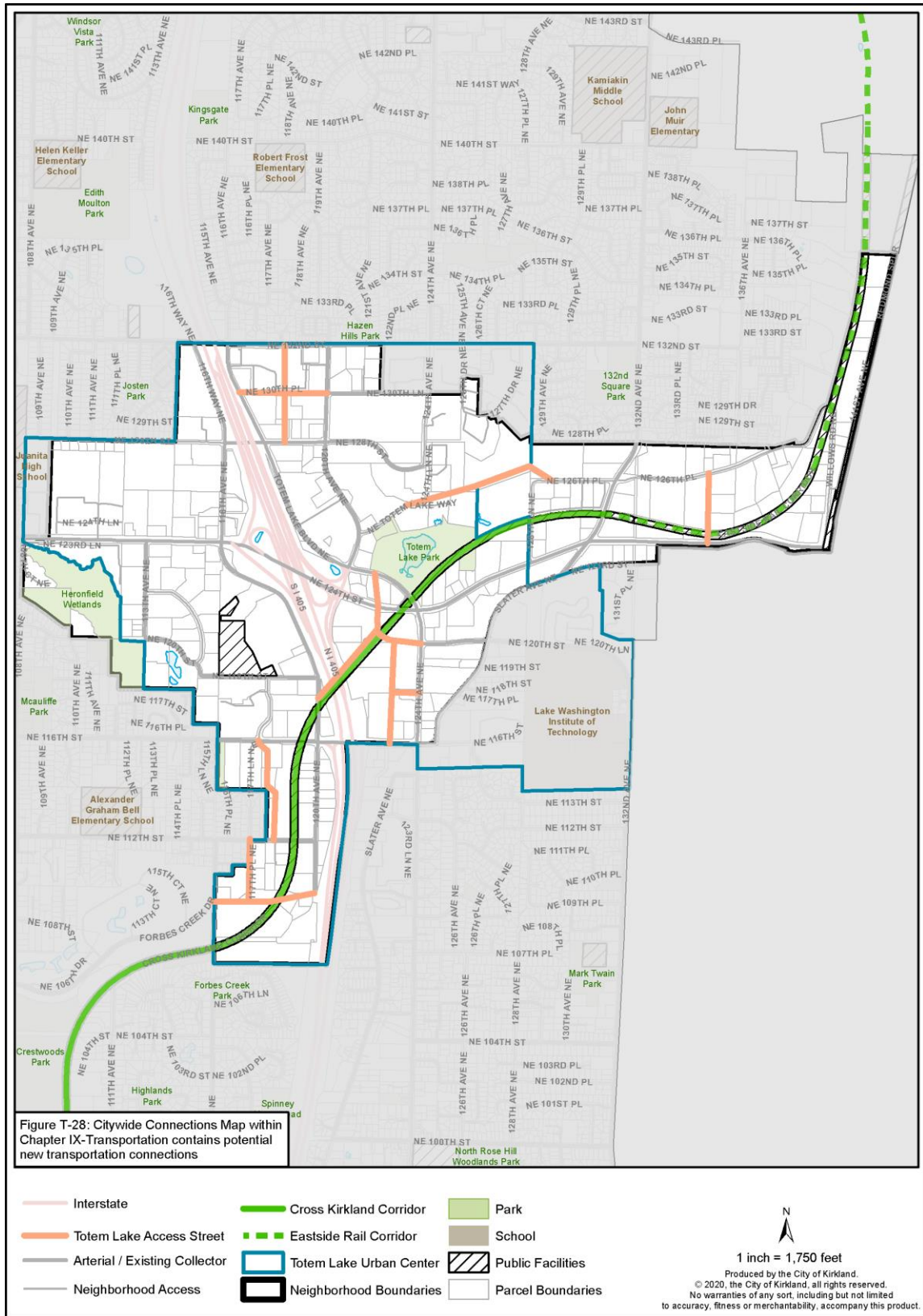


Figure TL-7: Totem Lake Pedestrian System

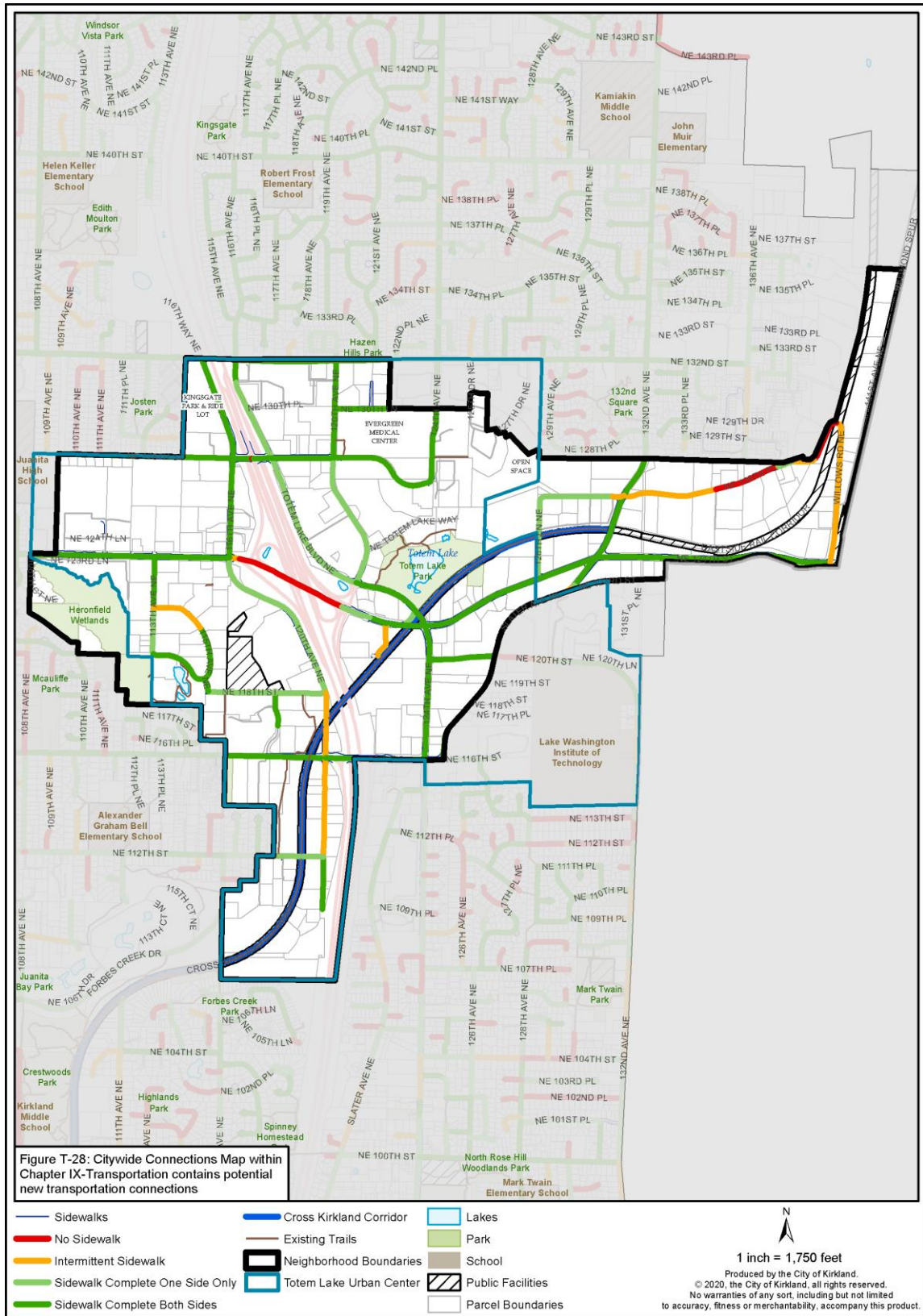
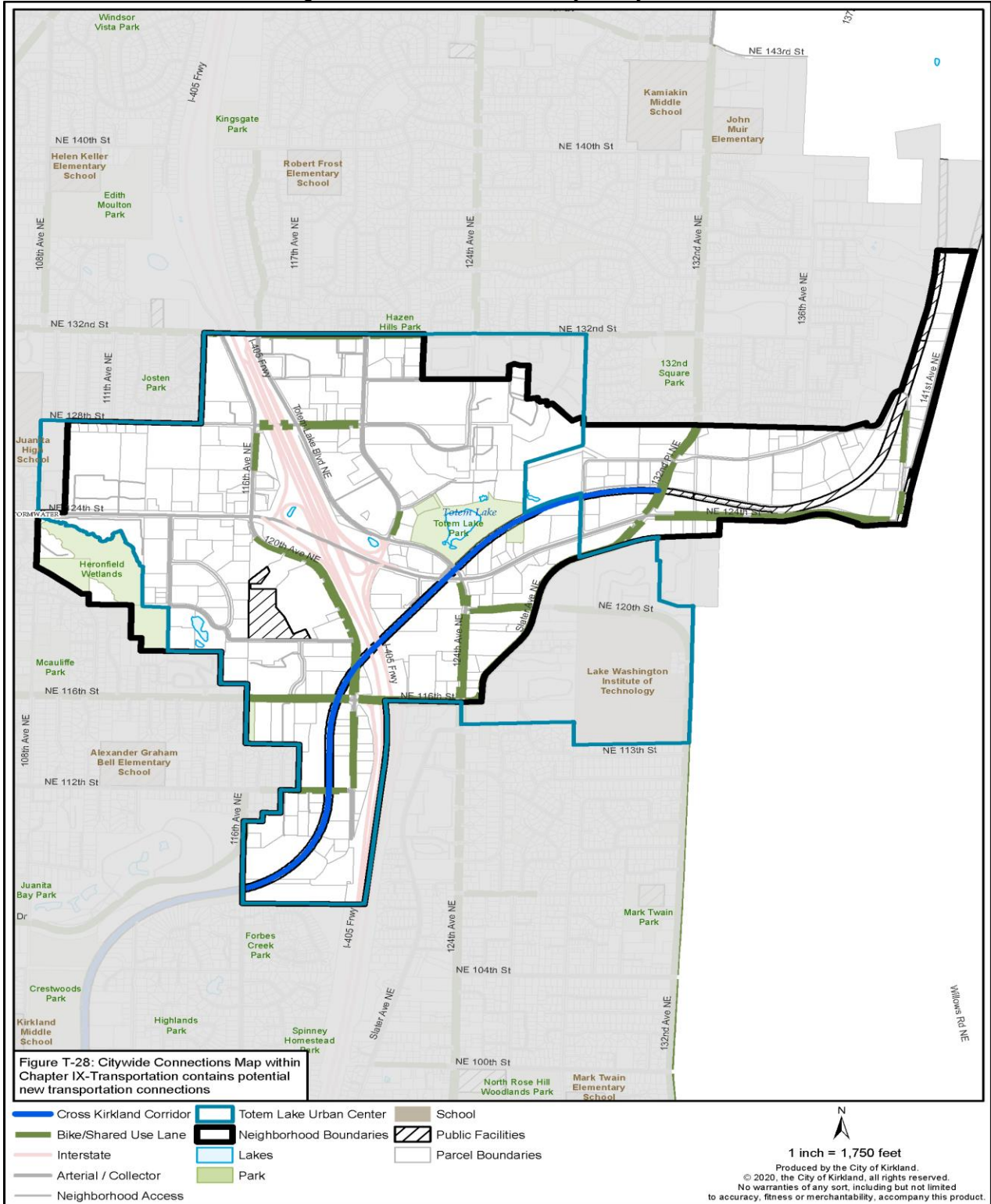


Figure TL-8: Totem Lake Bicycle System



Goal TL-18: Encourage coordination with regional transportation networks.

The Totem Lake Business District needs to be connected with larger transportation networks on the Eastside and in the region. Totem Lake businesses and residents should have a seamless and effective integration with mobility systems that serve both the business district and external destinations.

Policy TL-18.1: Improve access to the Totem Lake Business District from I-405.

During peak hours, much of the traffic congestion on City arterials such as 124th Avenue NE is partially caused by traffic spillover from I-405. Efforts to reduce the impacts of this spillover include providing additional through capacity on I-405, study of a new interchange at NE 132nd Street with I-405 and I-405 corridor improvements for transit access and expanded transit service. Improvements to the configuration of the interchange at NE 124th Street should also be explored and implemented. The City should support these efforts and continue to work with the Department of Transportation in the study of the I-405 corridor.

9. HOUSING

The Totem Lake Business District is a focus for employment, retail and health services that contains significant existing residential areas and offers opportunities to expand the housing supply. A central housing goal for the City is to increase housing opportunities while preserving neighborhood quality. Strong residential areas contribute to a sense of community, support retail and service activity, make the business district a more desirable business location and fulfill Citywide housing objectives.

This section provides policy direction regarding residential land uses in the Totem Lake Business District. Broad Citywide housing policies are found in the Housing Element (Chapter VII). These policies, while not repeated here, are applicable to the Totem Lake Business District.

Goal TL-19: Preserve existing ~~multifamily~~ residential areas that are more intensive and continue to expand housing opportunities in the Business District.

Policy TL-19.1: Preserve existing residential areas, while ~~allowing-encouraging greater-more densities-residential intensity~~ where appropriate within the Urban Center.

West of I-405, established residential areas are primarily located north and south of NE 124th Street. East of I-405, residential areas are located in the vicinity of the Evergreen Health Medical Center, extending east to the eastern boundary of the Business District (see Figure TL-2). These established residential areas, ~~with allowable densities ranging from 12 to 24 units per acre,~~ should be retained and strengthened. Increases in residential densities-intensity in these areas ~~may be~~ appropriate since they are well served by transit.

Policy TL-19.2: Protect ~~multifamily-residential~~ areas outside of the district's core from potentially adverse impacts of nonresidential, commercial and office uses.

Some Totem Lake residential areas abut commercial or office uses and may be adversely impacted by these uses. Existing City regulations ~~provide for protection of safeguard low-density residential areas from incompatible uses-undesirable impacts~~ through landscape buffers, building height and location and other measures. To protect-support the multifamily-all residential areas in the Totem Lake Business District, similar measures should be provided for ~~moderate and high-density~~ more intensive residential areas.

Policy TL-19.3: Seek opportunities to expand housing in the Totem Lake Business District.

In the Totem Lake Business District, expanded housing opportunities are provided through high residential ~~densities-intensities, including a minimum density of 50 units per acre within the district's core.~~ Mixed-use development is also encouraged within the core area. These measures provide for a significant amount of additional housing, ~~while preserving which complements~~ existing multifamily and single-family residential areas in and adjacent to the Totem Lake Business District.

Housing is ~~also allowed and in some cases~~ encouraged within some of the general commercial areas of the district. To encourage developers to choose to provide housing, an increase in height is allowed in some commercial areas when upper story residential use is provided. This incentive enables residential use to be included either in mixed-use projects, or in stand-alone developments where commercial use is not mandated as a ground floor use.

The areas listed below and shown in Figure TL-9 are “Housing Incentive Areas,” where residential use is allowed within the perimeter of an otherwise nonresidential area, or a greater building height is allowed for structures containing residential use:

1. Totem Lake West, north of NE 124th Street, west of 116th Avenue NE,
2. Properties east of 124th Avenue NE, north of NE 116th Street and west of Slater Avenue,
3. Properties east of 124th Avenue NE, south of NE 124th Street,
4. Properties south of NE 116th Street, west of the Cross Kirkland Corridor, and
5. Property north of NE 116th Street, south of NE 118th Street, and west of the Cross Kirkland Corridor.

Within these areas, properties north and south of NE 116th Street and west of I-405 (Incentive Areas 4 and 5 in Figure TL-9) should be allowed additional height only if residential uses are provided. As these areas are located near residential uses to the west and are situated at the southeast gateway to the Totem Lake Business District, residential use in this area will provide an appropriate-effective transition to the commercial areas to the east. For a mixed-use residential project on the combined parcels, 389310-0828, 389310-0829, 389310-0830 and 389310-0960 taller buildings shall be oriented away from and step down in height towards lower intensity residential areas.

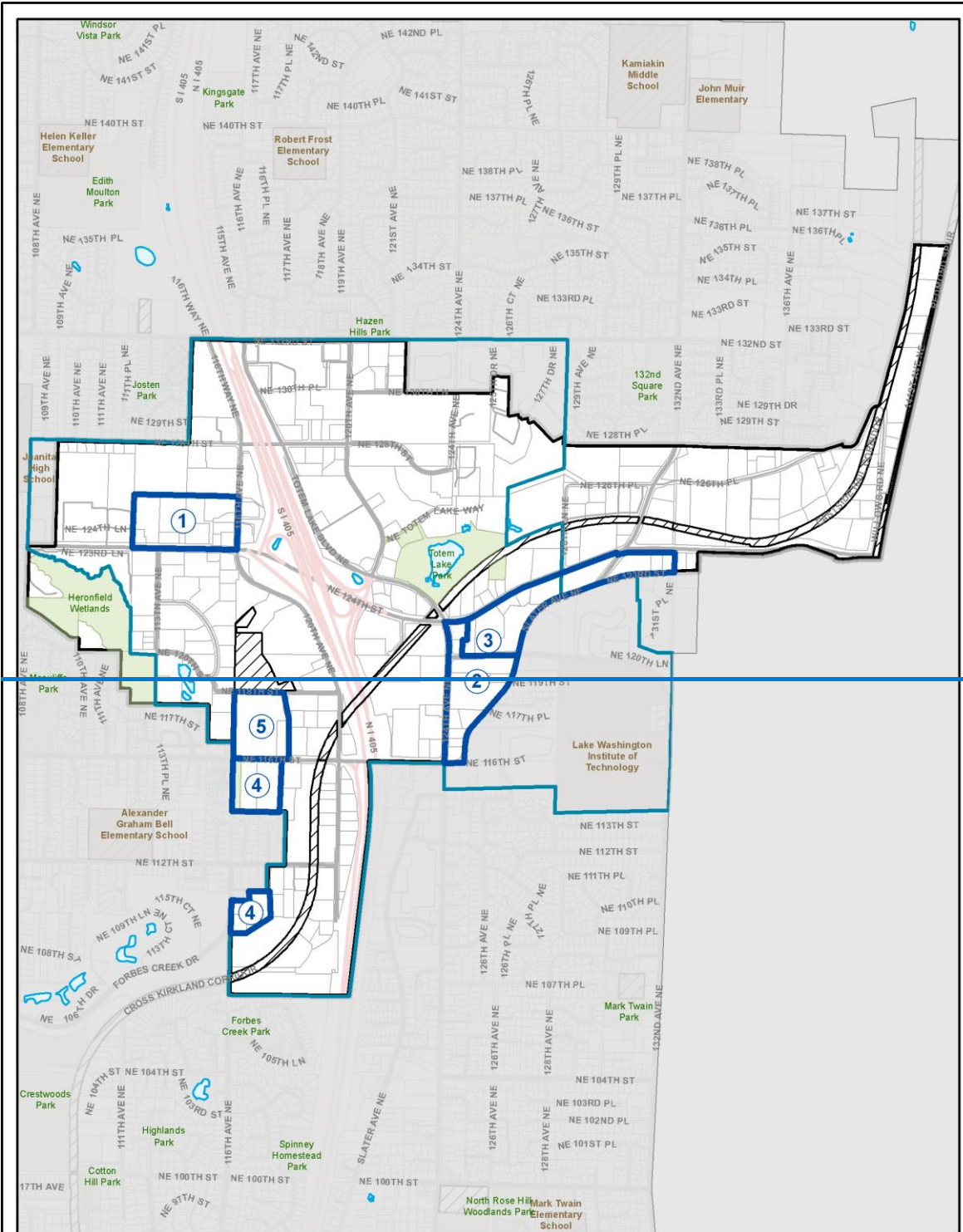
Another possible opportunity for expanded housing supply is through transit-oriented-development (TOD) at the Kingsgate Park and Ride, located in the northwest corner of the Totem Lake Business District. At this location, development of housing in conjunction with transit services, retail and commercial uses would-will provide additional housing supply, support transit usage, increase the possibility for greater affordability and contribute to activity in the district. The Kingsgate Park and Ride site, is owned by the Washington State Department of Transportation (WSDOT). The 2023, the City updated the land use designation for the site and City representatives have has initiated discussions with WSDOT representatives regarding the concept, and-While they have indicated that the agency has no long-term plans for the site that might preclude its use for TOD, The the City should continue discussions with WSDOT regarding the potential for TOD at this site.

Goal TL-20: Encourage housing that is affordable to the local workforce and meets diverse housing needs.

Policy TL-20.1:— -Seek ways to expand development incentives, requirements and other measures to encourage development of affordable housing.

Francis Village



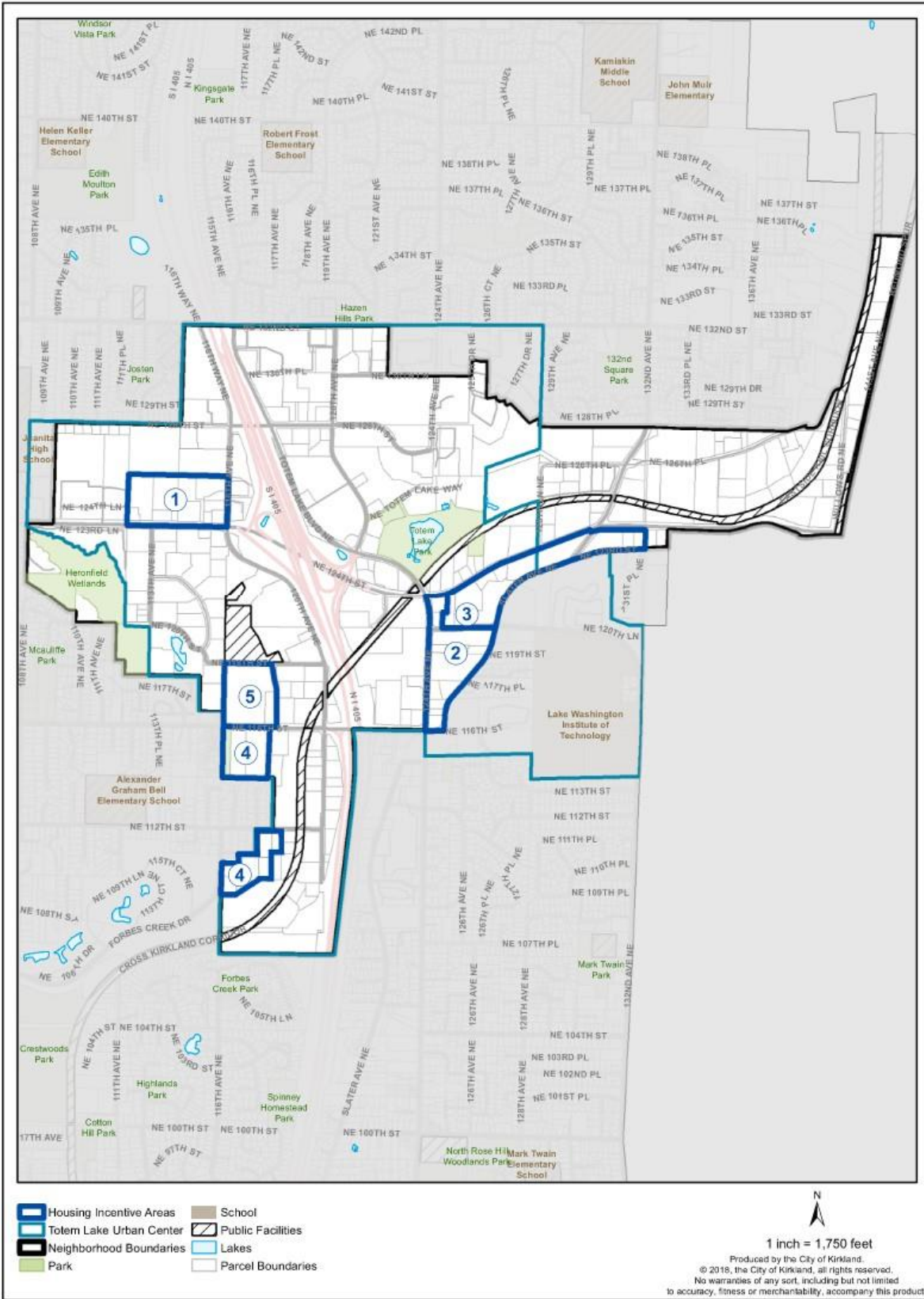


- Housing Incentive Areas
- Neighborhood Boundaries
- Park
- School
- Public Facilities
- Lakes
- Parcel Boundaries



1 inch = 1,750 feet
 Produced by the City of Kirkland.
 © 2018, the City of Kirkland, all rights reserved.
 No warranties of any sort, including but not limited to accuracy, fitness or merchantability, accompany this product.

Figure TL-9: Totem Lake Housing Incentive Areas



The Totem Lake Business District provides an important source of housing that is affordable to local service and office employees. Zoning and regulatory incentives help make housing more affordable to low to moderate income households. Additional incentives, such as bonus densities, public funding programs, public land donations, and development fee waivers, may also be needed to develop affordable housing projects. Similarly, partnerships with other public agencies and the private sector can introduce more diverse resources, which can help fund affordable housing. The assortment of affordability measures should be expanded to help support housing projects in the Totem Lake Business District.

Policy TL-20.2: Provide incentives that encourage variety in housing style, size and services.

The Totem Lake Business District provides a range of housing types, including ownership and rental ~~multifamily~~ housing in the form of townhomes, apartments and condominiums, and as well as senior and assisted housing for older adults and adults with varied abilities. Regulations encourage continued variety in housing types, such as housing in mixed-use developments and housing oriented to use of transit facilities. Additional height is granted for residential use in many areas of Totem Lake. Incentives including reduced parking requirements and increases in the floor area allowed for housing should also be provided where appropriate.

Mixed-use housing is another housing option that can increase housing opportunity and add vitality to the business district. Incentives for mixed-use housing are provided in the core of the business district and in defined Housing Incentive Areas.

10. URBAN DESIGN

The Totem Lake Business District is comprised of distinct areas separated by built features, such as I-405, NE 124th Street and other major corridors. Urban design policies seek to establish visual connections between these areas, create effective transitions within and around the district, and provide a collective identity for Totem Lake.

The urban design policies provide the broad rationale and vision for the future design ~~character~~ elements of the Totem Lake Business District. More specific considerations are provided in the subarea sections, and specific implementing direction based on these policies is provided in the Design Guidelines for Totem Lake. Future development will be reviewed by the City to ensure compliance with the Design Guidelines.

Goal TL-21: Ensure that public and private development contributes to a coherent and attractive-appealing identity for the business district.

Policy TL-21.1: Ensure that public improvements contribute to a clear identity for the business district.

Public infrastructure, consisting primarily of public rights-of-way, is a significant land use in the Totem Lake Business District. Public improvements such as streets, trails, community facilities, parks and public facilities should be designed and constructed in a manner that makes a positive contribution to the ~~character~~ physical features of the district. High quality materials, the use of public art, and other measures to reflect and enhance the identity of the Totem Lake Business District should be incorporated in public infrastructure design and construction.

Policy TL-21.2: Encourage private development to help build the overall ~~character~~ community design elements of the Totem Lake Business District.

Private development in the Totem Lake Business District should promote a sense of community ~~identity~~ and continuity. Design ~~measures~~ guidelines to achieve this goal should address important elements of design, such as human and architectural scale, the cost of building housing, sustainability, breaking up of building mass, attention to building details and pedestrian connections and orientation.

Design ~~measures~~ guidelines should also recognize the differing needs ~~and character~~ of the various areas of the district. For example, design ~~standards~~ regulations in the business district's core, which support intensive development and a high level of transit and pedestrian activity, are somewhat different from those in the balance of the district. Please refer to the Business District Core goals and policies for design measures that address this area.

Policy TL-21.3: Minimize the appearance of parking areas through location and shared facilities.

Parking lots are typically unsightly, break the links between buildings and destroy the continuity of the street front. Whenever possible, parking lots should be located at the rear of buildings. When this is not possible, landscaping should be used to break up and screen parking lots.

To minimize the area needed for parking, efforts should be made to share parking between facilities. Uses that have parking requirements at different times of the day should pool resources and develop plans for joint use. Adjoining parking lots shall not have unnecessary obstructions to through access, such as curbs or small changes in grade.

Policy TL-21.4: Establish standards to ensure that signs communicate effectively and ~~complement the character of the area~~ accessibly.

Signs should be an integral part of a building's façade. The location, architectural style, and mounting of signs should conform with a building's architecture and should not cover up or conflict with prominent architectural features. A sign's design and mounting should be appropriate for the setting and allow the sign to be easily read and understood by all.

Goal TL-22: Develop gateway features that announce, celebrate and strengthen the character and identity of the Business District.

Policy TL-22.1: Identify and create gateways that are integrated with the transportation system, including the Cross Kirkland Corridor and other bicycle and pedestrian connections. Use public and private efforts to establish gateway features such as artwork, signage, landscape features and structures at the locations identified in Figure TL-10.

Gateways to the business district provide an important first impression of the area's character and quality vitality. An existing gateway sign is located on NE 124th Street near the center of the business district near 124th Avenue NE. Other locations for gateways to the business district are shown in Figure TL-10.

At some locations, private development should install gateway features as part of future development. In other instances, public investment in such features is necessary.

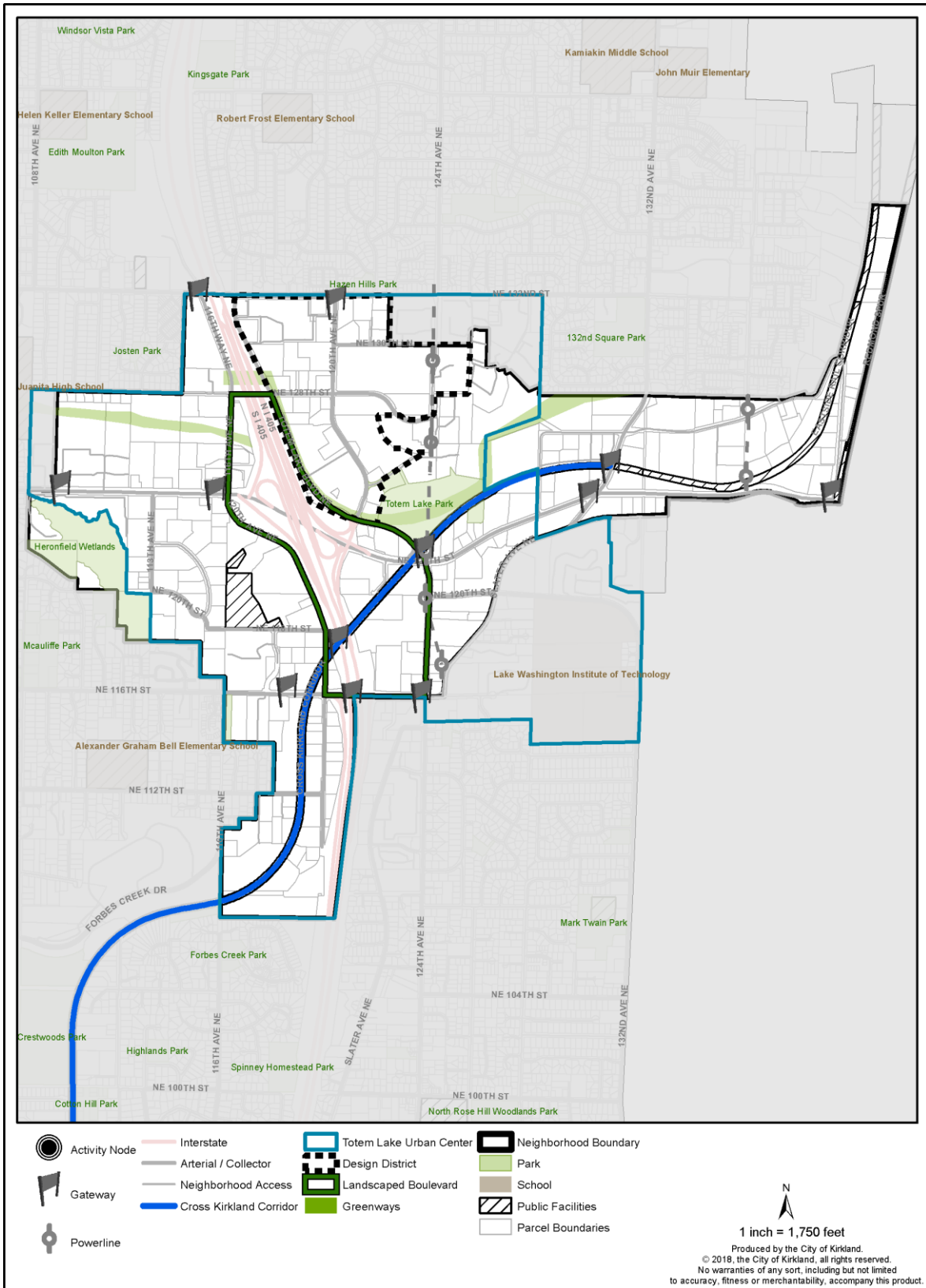
Goal TL-23: Develop a new landscaped boulevard, or "Circulator" that provides a green visual connection between the subareas of the business district through enhanced landscape and public amenities.

Policy TL-23.1: Create a landscaped boulevard that generally follows the alignment shown in Figure TL-10.

The purpose of the landscaped boulevard is to provide a softened landscaped border around the I-405 interchange at NE 124th Street and to visually connect the five subareas of the business district. Creation of the boulevard uses existing rights-of-way, such as Totem Lake Boulevard, 120th Avenue NE and 116th Avenue NE to the greatest extent possible.

The alignment shown in Figure TL-10 is the preferred, but not the only possible alignment. Future opportunities to achieve the purpose of the boulevard on slightly different alignments should be considered and developed as appropriate.

Figure TL-10: Totem Lake Urban Design



Policy TL-23.2: Develop standards for the landscaped boulevard to include wide sidewalks, extensive greenery and other public amenities.

A well-designed landscape plan will create a hospitable environment for ~~both the pedestrian and driver~~ all people regardless of travel mode by reducing scale, providing shade and seasonal variety and reducing noise levels. Elements that should be included in the landscaped boulevard include a widened and meandering planting area, continuous and clustered tree plantings, and clustered shrubbery and seasonal color in a variety of texture, color and shape. Other features, such as lighting, directional signs, benches, varying pavement textures and public art would further enhance the route.

Where Totem Lake Boulevard abuts the lake, the Master Plan for Totem Lake Park calls for a boulevard, designed to leverage the existing street edge with Totem Lake, a new median, and integrating the storm water wetland to the west of the street into one experience. In addition to the improved parkway-like character features, the redesign of the street is intended to improve bicycle and pedestrian facilities including new wider sidewalks.

Goal TL-24: Provide interconnected streetscape improvements throughout the business district that contribute to a sense of neighborhood identity connection to nature and enhance visual-aesthetic quality.

Policy TL-24.1: Establish a street tree plan for the business district.

The repetition of trees bordering streets can unify the landscape of an area. Trees add color, texture, and form to the urban environment. A strong street tree-planting scheme should establish community identity and provide a respite from the weather and the built environment.

Large, deciduous trees planted on each side of the street should bring visual continuity to the neighborhood, particularly on major entry arterials, such as NE 124th Street, NE 132nd Street, NE 116th Street, 124th Avenue NE, Totem Lake Boulevard and 120th Avenue NE. Many of these streets are currently fully or partially planted with street trees.

Policy TL-24.2: Develop an Urban Design and Amenities Plan for the Totem Lake Business District that provides guidance to create an identity for the business district and includes the following:

- —Specific standards to contribute to placemaking for both public and private development.
- —A plan for locations and types of amenities desired in the district, to include at a minimum:
 - —Street and park lights
 - —Benches
 - —Planters
 - —Waste receptacles
 - —Public art
 - —Directional signs
- —A plan for a system for linkages, such as paths and wayfinding elements, integrated with parks, plazas, community centers, recreation and open spaces to create an interconnected system of public spaces.
- —Concepts for improved intersections and streetscapes, including specific improvements to be installed within the Circulator.

- ~~_____~~—Locations for and techniques to highlight connections to the Cross Kirkland Corridor, consistent with the CKC Master Plan.

The quality ~~and character~~ of public improvements are critical components of the business district's image. Standards for public improvements will assist in the development of a coordinated streetscape that will unify the business district.

Currently, the gateway signs on NE 124th Street are the primary public amenity in the district. Expansion of these features, through both public and private measures, will help knit the district together visually and functionally.

Policy TL-24.3: Encourage place-making and a dynamic public realm by integrating publicly accessible plazas, open spaces and other gathering places with development in public and private projects.

Policy TL-24.4: Establish a lighting plan for the business district.

A coordinated plan for lighting throughout the district can ~~contribute to improve~~ the area's ~~viability~~~~identity~~. Fixtures which create a signature in style and placement throughout the streetscape and in public spaces can help to unify and upgrade the ~~visual character~~~~appearance~~ of the area. Careful attention to lighting in pedestrian-oriented districts can also improve the perception of safety for pedestrians. A lighting plan should also include techniques to address impacts between dissimilar uses, such as instances in which vehicle dealerships abut residential uses.

Goal TL-25: Provide effective transitions between the light industrial, commercial and higher ~~density multifamily~~~~intensity residential~~ uses in the business district and ~~single-family~~~~lower intensity~~ residential areas surrounding the district.

Policy TL-25.1: Provide for site and building development requirements and other regulations that address transition areas ~~to protect nearby residential~~ between varying uses in the neighborhoods.

Where commercial development adjoins established residential areas, the commercial use should incorporate site and building design features to soften its visual and physical impact and ensure that it is a ~~positive~~~~supportive~~ element to the nearby residential areas of the neighborhood.

Techniques used could include limits on height, building bulk and placement, and lighting; setbacks of taller buildings away from residential neighborhoods; requirements for landscaping; noise control and other appropriate measures. Transitional regulations should include provisions for greenbelts, buffers or other site and building design features that will ensure a compatible relationship between commercial and residential development.

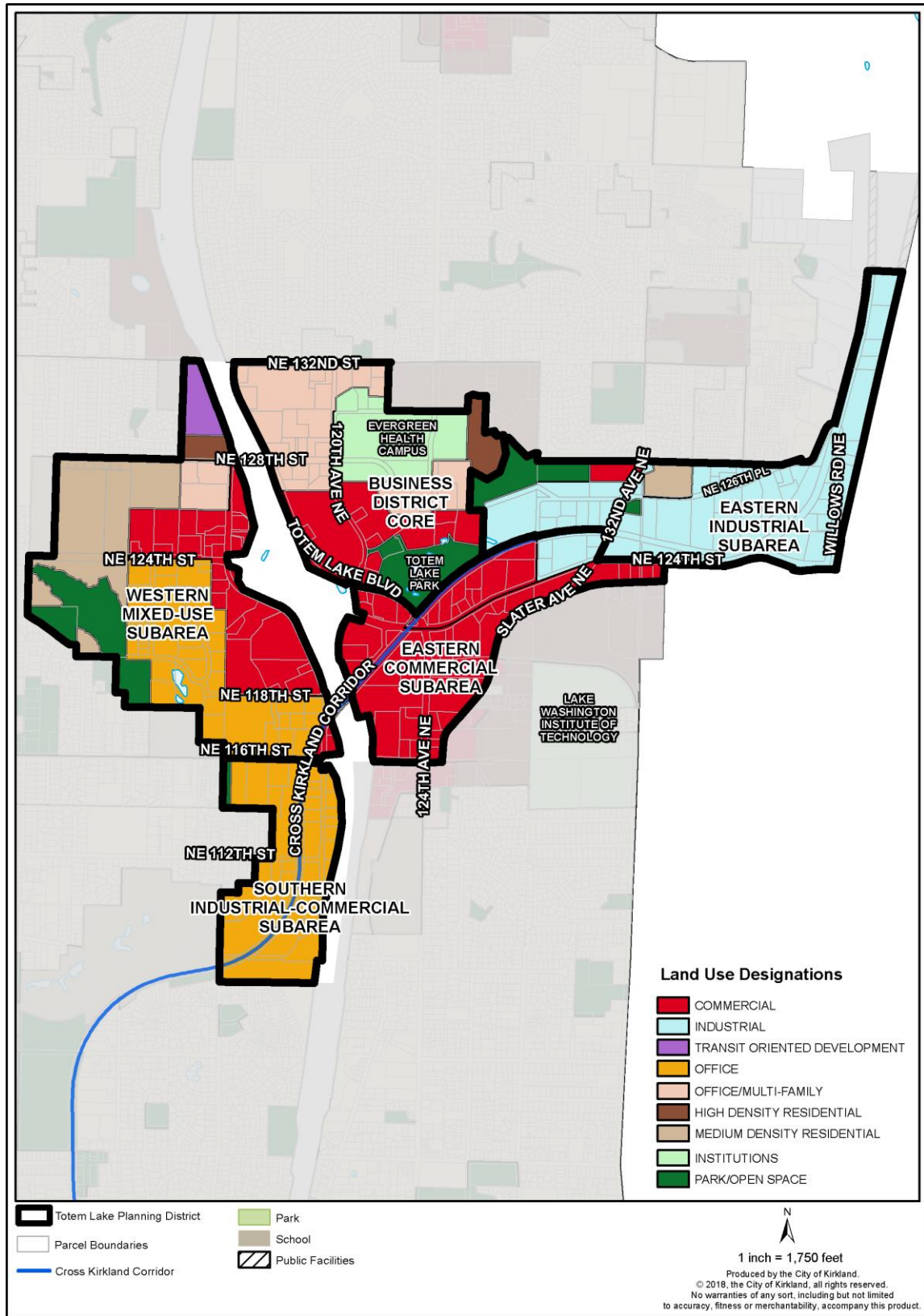
The City should ensure that policies for residential development contained in the plans for neighborhoods that abut the Totem Lake Business District include measures to address potential conflicts between these residential uses and the commercial development in Totem Lake.

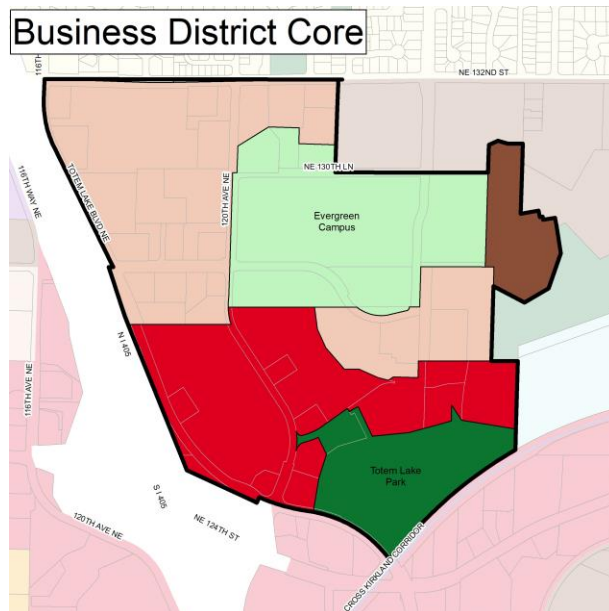
Policy TL-25.2: Where new residential development occurs near or within existing light industry/office areas, provide architectural techniques and vegetative buffers to minimize future conflicts between uses.

11. SUBAREA GOALS AND POLICIES

The general goals and policies in Section 3 of this plan also apply to the Totem Lake subareas, identified in Figure TL-11. The goals and policies described below are additional efforts to address unique conditions and opportunities in these areas.

Figure TL-11: Totem Lake Subareas





-The Business District Core is home to Evergreen Health Medical Center, the [Totem Lake Mall](#), [Village at Totem Lake](#) retail center, a variety of office/commercial uses, a regional transit center and Totem Lake Park. As of 2015, the core is characterized by development of low to moderate intensity. While thriving in many ways, this district has significant potential for increased activity and vitality. Policies in this plan are intended to strengthen the role of the Business District Core as the heart of the Totem Lake Urban Center, providing a thriving employment, housing, commercial, service and recreation center for the city and the region.

The location of a compact mix of land uses and employment opportunities within the core area can provide the environment for increased use of transit, and a decreased need for vehicle travel outside of the district. The policies for the Business District Core capitalize on the synergy created by existing and planned uses to create an attractive and vital community center. Ultimately, planned development in the core will contribute to the sense of community and identity for the entire Totem Lake Business District, as described in the Vision Statement.

Goal TL-26: Focus intensive growth within the core of the Totem Lake Business District.

Policy TL-26.1: Provide for increased intensity of development within the core of the Totem Lake Business District.

In the Totem Lake Business District, the most intensive commercial development is focused in the Business District Core (see inset). The Evergreen Health campus and the Totem Lake Mall play key roles in the overall health and vitality of the district, attracting a cluster of complementary and collaborative businesses.

To ensure the core is developed to urban densities, a minimum development threshold is required for new development and redevelopment within the district.

Goal TL-27: Provide a variety of high-density intensity residential uses.

Residential development in the Business District Core is provided for in the mixed-use area. Mixed-use occurs when more than one land use is within a single building or when different

uses are located in separate buildings close to each other. An important characteristic of mixed-use is that uses are in close proximity and have ~~a~~ good walking, [biking, and rolling](#) connections. Redevelopment in the mixed-use area could include both single use and mixed-use buildings within close proximity. Redevelopment should meet the ~~density and~~ intensity standards for the core area and make the mixed-use area generally more functional and attractive.

Policy TL-27.1: Encourage high ~~density-intensity~~ residential development within mixed-use areas, including the ~~Totem Lake Mall~~[Village at Totem Lake center](#).

In order to ensure a viable residential community in the Business District Core, the City provides a range of regulatory incentives that support residential development, including no maximum density, increased building height and flexible parking requirements. Additional incentives should be explored to encourage residential development. Improvements to public spaces and streetscapes should be considered as ways to make the subarea a more ~~attractive and~~ appealing place for residents.

Policy TL-27.2: Encourage development of housing that is affordable to the local workforce and meets diverse housing needs.

Measures such as zoning and regulatory incentives, fee reductions/waivers or other measures, should be utilized as means to promote housing affordability. In addition, incentives should be provided to ensure a variety of housing types to address the needs of employees, seniors, or others who would benefit from housing near the employment center and health services in the Business District Core.

Goal TL-28: Ensure that public and private development contribute to a lively and inviting ~~character in the~~ Business District Core.

The fundamental goal for the Business District Core is to create a pedestrian-oriented urban center with a safe, lively and attractive environment. To achieve this goal, design ~~principles-~~[guidelines](#) for the core strive to ensure that development will enhance the appearance of the built environment through superior design and the use of high quality building materials, identify and create attractive and effective public spaces, and encourage pedestrian activity through both building design and improvements along the streetscape. Key principles address:

- ~~•~~ **Mix of Uses** – Over time, the Business District Core should evolve into a diverse mix of uses, including office, retail, medical and hospital uses, and high-~~density-intensity~~ residential. This mix of uses can be provided in mixed-use buildings or in single-use buildings located in close proximity and with good pedestrian connections.
- ~~•~~ **Pedestrian Orientation** – Building entrances should face the street. Building mass should be broken up by offsets, step-backs or similar measures. Where compatible with the use, generous windows should be provided and oriented toward the street. Parking should not be the predominant use next to streets.
- ~~•~~ **Public Spaces** – Development and redevelopment projects should provide publicly accessible open spaces that are focal points for the community. The City should identify park and recreation trail locations that encourage pedestrian activity throughout the core, incorporating the improvements and trails identified for Totem Lake Park in the Totem Lake Park Master Plan.

Policy TL-28.1: Promote high quality redevelopment through design ~~principles-~~[guidelines](#) for the mixed-use area west of Evergreen Health Medical Center.

The area west of the hospital campus has the potential for significant redevelopment. Specific design [principles-guidelines](#) are included for this area to ensure that the mass of larger buildings is minimized, distinctive roof forms contribute to a visually interesting skyline, and appropriate transitions from lower density uses north of the Business District Core are incorporated.

Policy TL-28.2: Encourage development that will bring vitality and activity during evenings and weekends.

Redevelopment should emphasize compatible retail, residential, service and recreational uses that attract activity and bring vitality during evenings and weekends. In addition, redevelopment in the Business District Core should provide exterior and interior public spaces appropriate for festivals, fairs, public gatherings, open-air events, seasonal events, [cultural celebrations](#), exhibitions, and other activities throughout the year.

Goal TL-29: Support and strengthen the role of Evergreen Health Medical Center as an important part of the Kirkland community.

As the City's largest employer, the Evergreen Health Medical Center provides significant economic value to the community. The Medical Center campus also helps to provide a focus for the core of the business district, with its larger buildings and substantial areas of open space. As the Medical Center continues to grow within the core area, these attributes should be maintained and strengthened.

Policy TL-29.1: Support the continued vitality of the Evergreen Health Medical Center and supporting uses.

Through its health care services, community programs, and employment/economic role, the Evergreen Health Medical Center significantly benefits the quality of life in the City and region. Public policy direction should nurture and support the continued health and vitality of the Medical Center. Public measures include:

- [A streamlined regulatory process;](#)
- [Provision of ancillary development capacity for supporting uses;](#)
- [Development standards to ensure high quality development.](#)

The regulatory process and designation to ensure sufficient development capacity are addressed within the Economic Development section of this element.

Policy TL-29.2: Implement design [principles-guidelines](#) for the Evergreen Health Medical Center.

Future development on the Evergreen Health Medical Center campus should be consistent with a [master-development](#) plan ([formerly referenced as a master plan](#)), reviewed by the City, which includes all known future development plans for the facility. Design [principles-guidelines](#) contained in the Municipal Code address a broad range of issues related to campus development, including directing taller buildings toward the center of the site, ensuring that campus edges are [compatible with blended seamlessly with](#) neighboring uses, and enhancing and improving [equitable](#) pedestrian access within the campus and to neighboring uses, particularly the transit center and Totem Lake Mall.

Evergreen Health Medical Center



Source: Image Capture: Oct. 2014, copyright 2016 Google

Goal TL-30: ~~Expand and strengthen~~Support the retail focus at the Village at Totem Lake Mall.

The Village at Totem Lake Mall has the potential to be a vibrant, intensive retail center for the Kirkland community and surrounding region. ~~As redevelopment of the mall property occurs, there is an opportunity to~~Continued support of the Village can provide ~~residents and visitors~~people with an exciting place to shop, congregate and relax. ~~Careful redevelopment of the mall property will be critical to its success as a retail center and community gathering place.~~

Policy TL-30.1: ~~Strengthen~~Support the role of the Village at Totem Lake Mall as a retail center and community gathering place.

Currently, the Village at Totem Lake Mall is successful in many ways. It provides retail services and employment opportunities, is a significant contributor of retail sales tax income to the City and serves as the site for some community activities. The policies in this element are intended to support ~~efforts by the Totem Lake Mall to increase its~~its role in all of these areas and realize its potential as a vibrant retail and community focal point. ~~Policies within the Economic Development section address public actions, such as a regulatory flexibility and increased development potential, to encourage future development at the Totem Lake Mall.~~

Village at Totem Lake





Drawing used courtesy of CenterGal Properties, LLC

Policy TL-30.2: Emphasize high quality urban and architectural design in redevelopment of the Totem Lake Mall.

The redevelopment of the Totem Lake Mall should occur within the context of an overall site-development master plan for the upper and lower mall. Key principles for development of the mall include the creation of a pedestrian-oriented environment, through the use of public spaces, screening and the appropriate siting of parking facilities, the siting of buildings to a pedestrian network and the orientation of ground floor spaces to encourage pedestrian activity and visual interest. Visual and functional connections to Totem Lake Park, as well as the provision of pedestrian connections to the Evergreen Health campus, transit center and mixed use area north of the lower part of the mall are also important.

In addition to the design principles contained in the Municipal Code, the following specific principles should apply to the Totem Lake Mall:

- Coordinate with Evergreen Health to provide a pedestrian connection that allows access between the Medical Center campus, Transit Center, and retail area in a safe and inviting attractive environment. This feature may be an open space amenity or incorporated into buildings located near the slope.
- Provide a visual and functional connection between the upper and lower malls.
- Allow for future visual and functional connections to the Totem Lake wetlands and planned green corridor extending along Totem Lake Boulevard.
- Provide for a pedestrian-oriented environment, with appropriately scaled signs and architecture. Public spaces should be provided for gathering and relaxation.
- Provide extensive landscaping, including substantial use of trees, within parking areas to soften the visual impacts of cars and pavement.

Goal TL-31: Support a diverse transportation network in the Business District Core that emphasizes pedestrian and transit use.

Policy TL-31.1: Increase transportation options throughout the Business District Core.

The core area has limited options for local vehicular circulation. Development of a complete network of local access streets as shown in Figure TL-6 would allow for choices in through movement and local access. Improved connectivity in this area would encourage walking between medical and commercial uses and new residential areas. It would also encourage the use of transit through reducing distances between activities and the transit facilities along NE 128th Street. The finer street grid would also contribute to the ~~character and~~ identity of the district's core. Key potential new street connections include mid-block connections between NE 128th Street and NE 130th Street, east of 120th Avenue.

Policy TL-31.2: Calm traffic on 120th Avenue NE.

120th Avenue NE runs between the upper and lower Totem Lake Mall, provides access to the Evergreen Health Medical Center and is the more heavily used of the two major north/south arterials through the Business District Core. Traffic calming measures on 120th Avenue NE would improve ~~pedestrian~~ comfort and safety of those choosing to walk, bike or roll, increase the potential for a stronger connection between the upper and lower mall, and improve visual quality in the heart of the business district. Traffic calming measures could include a traffic roundabout, narrowing of the street, addition of on-street parking, and a mid-block crossing with mall redevelopment or other measures. Specific traffic calming measures should be developed in collaboration with emergency service providers to ensure adequate emergency access to the Evergreen Health campus and other uses in the area.

Policy TL-31.3: Provide new pedestrian connections to Totem Lake Park from businesses, residential areas, transit and the Evergreen Health campus.

The Totem Lake Park Master Plan calls for improved pedestrian connections to the park. In addition to the park being a starting point and a destination for visitors along the Cross Kirkland Corridor, opportunities to connect to more distant parts of the business district also exist. Possible connections include the Evergreen terrace climb, from the north side of the lake along the Seattle City Light right-of-way, connections to the Totem Lake Mall, hospital campus and transit center, ~~and the spiral ramp and overpass from the park's southwestern edge over NE-124th Street.~~

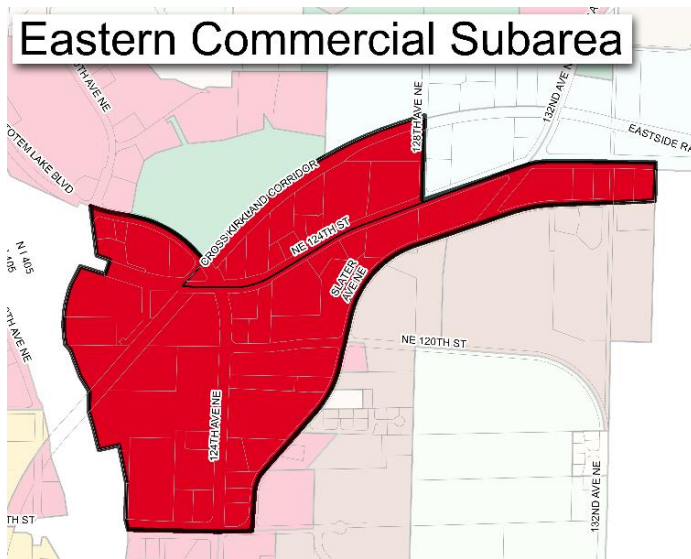
The Totem Lake Connector pedestrian bridge, completed in 2023, connects two portions of the Cross Kirkland Corridor that were previously divided by the major intersection at NE 124th Street. The bridge also provides access to Totem Lake Park.

Totem Lake Connector Bridge



Eastern Commercial Subarea

The Eastern Commercial Subarea contains much of the Totem Lake Business District's commercial land. This area is planned for mixed use, including [higher density-intensity](#) residential, particularly in the designated Housing Incentive Areas west of 124th Avenue NE. Auto dealerships are also a prominent land use in the area, both north and south of NE 124th Street, east of 124th Avenue NE.



Goal TL-32: Strengthen existing uses and support redevelopment consistent with Urban Center objectives.

Policy TL-32.1: Promote redevelopment of the commercial area located on the west side of 124th Avenue NE and south of NE 124th Street under a master plan for the entire area (TL 5).

The retail area located east of I-405, west of 124th Avenue NE, south of NE 124th Street and north of NE 116th Street presents a unique opportunity for the development of a planned mixed-use village within the southern portion of the Totem Lake Business District. Assembly of land may be feasible in this area, as much of the area is contained in several large property ownerships, the largest being slightly over 9 acres. The western portion of the area is located adjacent to the freeway, and at a lower elevation that may enable greater building height with minimal impact.

The vision for this area is as a pedestrian-oriented mixed-use village, with a network of local access roads reducing the scale of the area for pedestrians, vehicles and bicycles. The network would be the foundation for an [attractive-effective](#) grid of streets, wide sidewalks, and a supporting combination of commercial, office and residential uses. New access to the Cross Kirkland Corridor would connect users of the site and visitors to the Totem Lake Business District to this open space and transportation corridor and to areas west of I-405. Development [standards-regulations and design guidelines](#) provide flexibility to consider creative proposals for redevelopment of this important opportunity site and emphasize:

- ● Strengthened retail development,
- ● Greater building heights than those allowed in other commercial districts,
- ● Creation of a more pedestrian-oriented district through:
 - ● The siting of buildings and public spaces to be oriented to the pedestrian and Cross Kirkland Corridor,
 - ● The creation of a street grid through development of a north-south right-of-way, and the consideration of development bonuses where the set-aside of land and improvement of this right-of-way is provided through private development.
- ● Accommodation for a vehicular connection to and across the Cross Kirkland Corridor (see Figure TL-6),
- ● Increased housing capacity, and affordable housing in particular,
- ● Complementary design in the development of the site, through:

- • Coordination of individual increments of development with overall design plan,
- • Shared vehicular access and parking areas, and
- • Coordinated sign systems.

Policy TL-32.2: Ensure compatibility in building design along the Cross Kirkland Corridor and Totem Lake Park.

Where commercial and light industry/office uses exist between NE 124th Street and the CKC, next to Totem Lake Park, the relationship of these land uses to the corridor and lake should be considered. Building openings and connections should be consistent with the objectives of the 2013 Totem Lake Park Master Plan and 2014 CKC Master Plan.

Policy TL-32.3: Allow ~~multifamily~~ multiunit residential use in mixed-use development where light industry/office/commercial land north of NE 124th Street lies within the Urban Center (TL 7A).

Residential use within this transitioning area is ~~appropriate~~ encouraged where proximity to Totem Lake Park serves as an amenity for the living environment. As the transition between new mixed use and residential developments and existing light industrial uses presents a compatibility challenge, the siting and design of new buildings should be accomplished in a manner that minimizes and mitigates conflicts with existing light industrial uses. Development standards such as minimum acreage requirements and ground floor commercial use will help to create a successful mixed-use environment while light industrial uses remain.

Policy TL-32.4: Avoid or minimize impacts of development on Totem Lake Park and the Cross Kirkland Corridor (CKC).

Taller structures and more intensive development may produce height/bulk and shading impacts on Totem Lake Park and the CKC. An evaluation of building orientation, bulk and mass and shadow impacts from development on the park and CKC in this area (see inset) should be included in the review of building and site design.

Areas Near Totem Lake Park and the CKC

trends across the Eastside indicate that most new office development has occurred outside of Kirkland, as the City is a secondary office location to other locations on the Eastside.

Kirkland's light industry/office areas are functioning well with generally good vacancy rates for industrial space. Despite deficiencies in the existing space in the Southern Industrial-Commercial Subarea in meeting the needs of light industry/office tenants, the area continues to provide over one-third of the City's light industry/office space. Flexibility in regulations to allow expansion and redevelopment for light industrial uses would provide support to strengthen this sector within the subarea.

Goal TL-33: Preserve and intensify commercial uses.

Policy TL-33.1: Support and promote expanded opportunities for office development south of NE 116th Street through development incentives and flexibility, while continuing to allow for existing light industrial uses to expand and new light industry/office or industrial flex businesses to locate in this area.

Generous development standards are in place to attract and accommodate new commercial development in this area. Flexibility in regulations to allow modifications and expansions of existing structures for modern light industry/office uses will enable the existing building stock to address changing needs.

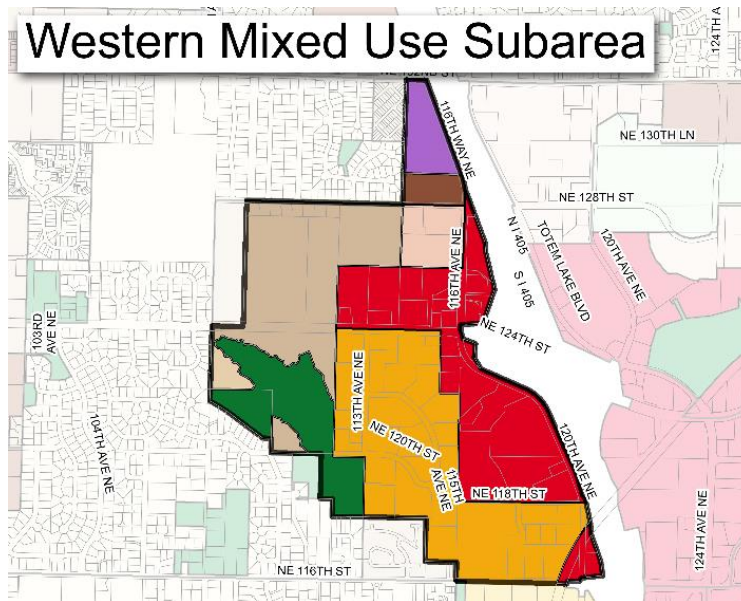
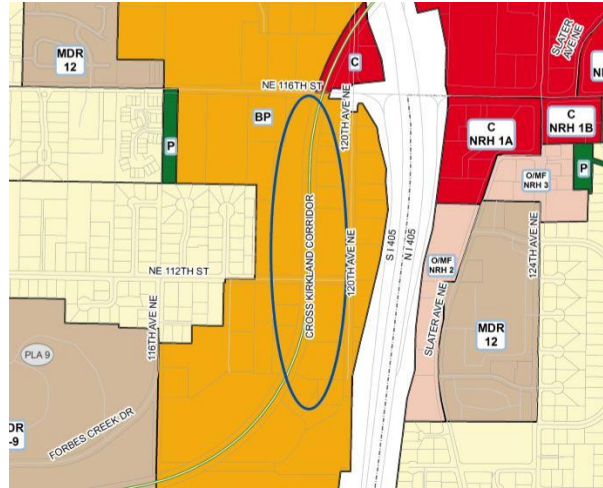
Goal TL-34: Accommodate residential use where appropriate within the subarea.

Policy TL-34.1: Accommodate residential use within the Housing Incentive Area located in this subarea.

Residential use is appropriate along the perimeter of this area, as shown in Figure TL-9, where conflicts with light industry/office uses are less likely to occur.

Policy TL-34.2: Allow for flexibility in regulations that encourage creative proposals for residential development along the CKC when included in a planned, mixed use development.

Growth in employment in businesses located along the CKC south of this subarea has expanded the City's housing needs. An opportunity exists to address this need through providing residential development along the corridor, where residents could enjoy direct access to employment along the bike or future transit corridor. Standards for development should include land aggregation of at least 10 acres, to ensure a substantial property size is included to accommodate a mix of uses and range of amenities for residents and businesses. Vehicle and pedestrian access to the development should also be designed to minimize conflicts with traffic for light industry/office uses. Flexibility in regulations is important, to enable consideration of the complex issues of siting this type of development in the Southern Industrial-Commercial Subarea.



The Western Mixed Use Subarea contains a wide range of uses and activities. The Kirkland Justice Center, providing police and court services, is located here, just west of the general retail area along 120th Avenue NE, and just east of the large 405 Corporate Center, where much of the subarea's office and some flex industrial space is located. A mix of community recreational/cultural uses are clustered in the TL 10B zone at the southern end of the subarea. North of NE 124th Street lies the Totem Lake West shopping center and the Kingsgate Park and Ride lot. [Medium density multifamily R](#) residential development [of moderate intensity](#) remains at the subarea's western boundary.

Within the southern upland portion of the Heronfield Wetlands Open Space, community members built and operate Jasper's Dog Park, a two-acre, fenced site that provides an opportunity for dogs to play and socialize off-leash, and for [citizens-community members](#) to visit and enjoy the natural setting.

The wooded hillside located at the south end of the Western Mixed Use Subarea is designated as a medium landslide hazard area (see Figure TL-4a). Development in this area should be subject to the following conditions:

- (1) Lot coverage for development should be limited to ensure maximum preservation of existing vegetation.
- (2) Heavily vegetated visual and noise buffering should be maintained or developed where buffers are needed either for residential use of this site, or from nonresidential use of this site to residential use on neighboring properties.
- (3) Access to NE 116th Street should be limited due to the terrain and the desire to retain existing trees within the southern portion of the site.

North of NE 124th Street and west of 116th Avenue NE lies the Totem Lake West shopping center. This retail center has the potential for redevelopment to include more intensive commercial development as well as upper story residential use. Design [guidelines-regulations](#) establish redevelopment of the center as a pedestrian-oriented village, with a centralized plaza surrounded by storefronts oriented to internal private or public streets. Residential and/or office uses would be located on upper floors, with residential uses clustered at the north end of the site overlooking the natural greenbelt area.

Goal TL-35: Support transit-oriented development (TOD) at the Kingsgate Park and Ride.

The Kingsgate Park and Ride site, located at the subarea's northwest corner, is owned by the Washington State Department of Transportation (WSDOT), and currently developed as a park and ride with 500 parking stalls. The Park and Ride is served by Sound Transit and Metro, and linked to the I-405 direct access ramps and transit center via a pedestrian walkway. The site's location within the Totem Lake Urban Center, close to employment, shops and services, is ideal for transit-oriented development.

Kingsgate Park and Ride



Source: Image Capture: Sep. 2011, copyright 2016 Google

Partnerships between the City of Kirkland, WSDOT, King County Metro, ARCH (A Regional Coalition for Housing) and nonprofit and private developers should be encouraged to create a mixed-use community within walking distance of the Totem Lake transit center.

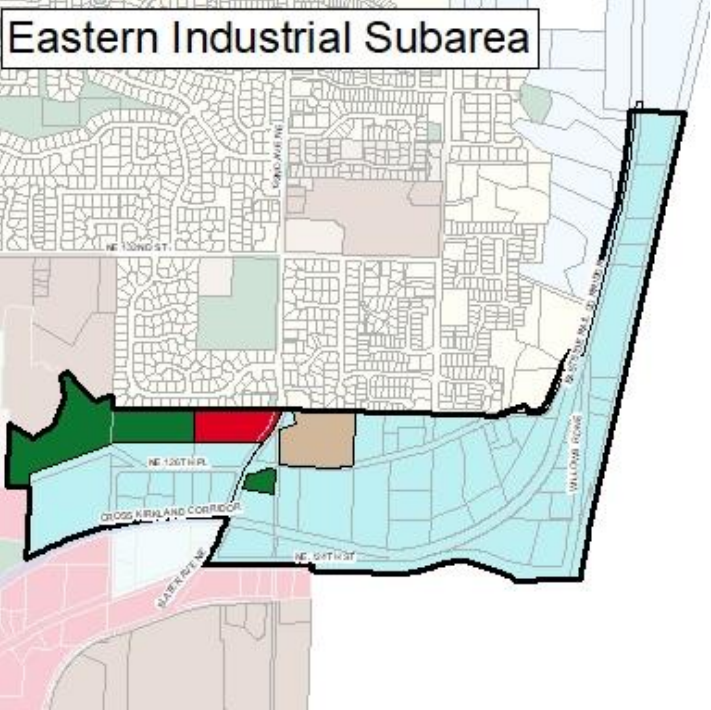
~~Future redevelopment of the site The City and State and/or King County Metro should include also work closely with the community engagement with the surrounding property owners and community to discuss potential design considerations for the site such as to establish design guidelines and development standards for the site. Standards should address appropriate~~ building scale and massing for the site and adjacent residential uses, and mitigate traffic, visual, noise and other impacts of the development to the surrounding streets and residential areas. Vehicular access points should be minimized to avoid congestion and safety problems, and pedestrian and bicycle access should be enhanced.

Policy TL-35.1: Encourage new transit-oriented development that:

- — Provides a mix of housing, offices, shops and services at the Park and Ride site.
- — Provides for affordable housing.
- — ~~Establishes standards for~~ Provides high-quality site and building design.
- — Maximizes the effectiveness of transit-oriented development through supporting necessary densities, expanding opportunities for retail and other uses, reducing the need for parking, and mitigating traffic, visual, noise and other impacts.
- — Ensures that transit operations remain efficient and are enhanced as appropriate.

Eastern Industrial Subarea

The Totem Lake Business District contains a large light industry/office area generally located east of 124th Avenue NE, north of NE 124th Street and generally north of the Cross Kirkland Corridor. Land east of the Eastside Rail Corridor at Kirkland's easternmost boundary with King County is also included in this area. The area is developed with a variety of light industrial and service uses and is one of the few remaining light industrial areas in the City. While the industrial/commercial area in this subarea provides a range of services, over 90 percent of the jobs located here are tied to either light industry/office (aerospace/high tech) or auto dealerships.



Goal TL-36: Support the retention and expansion of light industry/office uses while allowing flexibility in uses for unique conditions.

The Eastern Industrial Subarea provides a close-in location for many businesses that are either light industry/office in nature or that provide goods and services such as auto repair, plumbing or contracting. These uses should be supported through regulations that allow them to expand, while minimizing conflicts with nonindustrial uses within the area.

Environmental features present in some areas of the Eastern Industrial Subarea make development with traditional light industrial structures challenging. Flexibility for a variety of uses is appropriate in these areas.

Policy TL-36.1: Support the continued existence of light industry/office uses in the eastern portion of the business district.

Light industry/office uses in this area should be supported through development standards and incentives that encourage existing businesses to remain and expand, and future industrial tenants to choose to locate here.

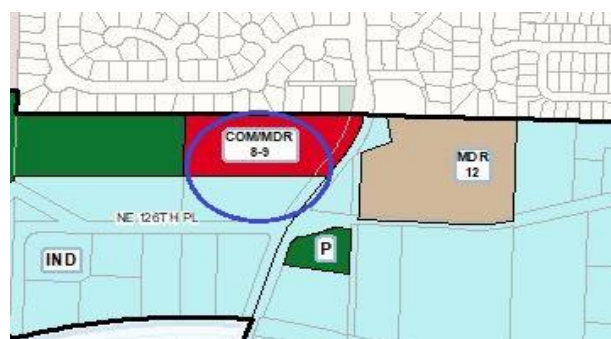
Policy TL-36.2: Development of the land north of NE 126th Place should be subject to standards to protect critical areas.

The parcel of land located within this area, on the north side of NE 126th Place, may be appropriate for limited retail, light industry or small office uses. The abutting parcel directly to the north of this site is a steep, heavily vegetated hillside and lies within an identified high landslide susceptibility area (see Figures TL-4a and inset map). Although a range of office, light industry or retail uses is permitted in the southern portion of this area if it is developed alone, development that includes consolidation with the northern parcel is subject to the following conditions that apply to any development of the northern parcel:

- (1) Proposals to develop the northern parcel (TL 9B) alone with residential development should be subject to public review and discretionary approval through the City's Process IIA process. Proposals that include consolidation and coordination with development of the southern parcel in TL 9A in retail (vehicle) use should be reviewed through a Planned Unit Development proposal (Process IIB).
- (2) ~~Standards for residential development on the northern parcel (TL 9B) should allow a base density of eight dwelling units per acre.~~ The site's environmentally sensitive conditions should be addressed through restrictions on lot coverage and requirements to preserve vegetation and watercourses in their natural state. A permanent natural open space should be retained within 100 feet of the north property line. The clustering of structures may be required to preserve significant groupings of trees. In addition, slope stability analysis should be required to ensure that the slope will be stable and to determine the best locations for development. The areas with the steepest slopes should be left undisturbed in a natural condition and retained as permanent natural open space.

Vehicular access should be from south of the slope, unless this is not possible, in which case it should be limited to one point on NE 132nd Avenue NE. Residential use should be limited to five stories and include affordable units consistent with City standards.

Parcel north of NE 126th Place



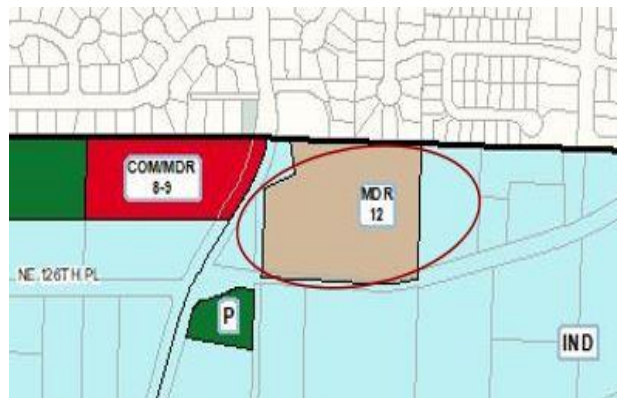
- (3) Standards for nonresidential development that includes consolidation and coordination of both parcels (TL 9A and TL 9B) should ensure that impacts to critical areas are avoided. Where this is not practicable, impacts should be minimized. Mitigation may be proposed incorporating best available science that results in an equal or greater level of function and value compared to existing conditions. Vehicle access for this use must be from the south. Residential uses to the

north should be protected through an expanded buffer, beyond the 100 feet required for residential use, and through standards limiting lighting and noise.

*Policy TL-36.3: Support development of ~~multifamily~~ **higher intensity** residential use as well as light industrial/office uses east of 132nd Avenue NE and north of NE 126th Place, where topography and critical areas may make development with light industry/office use challenging.*

Steep slopes within High Landslide Hazard Areas, dense vegetation and wetlands exist within some areas east of 132nd Avenue NE. On these parcels, development with ~~multifamily~~ residential use may provide opportunities to avoid potential wetlands, buffers and steeper areas through the siting of units in several smaller structures that follow existing topography. Since these properties lie within a successful light industry/office area, residential development should include substantial buffers and other elements to minimize conflicts with existing and future light industry/office neighbors.

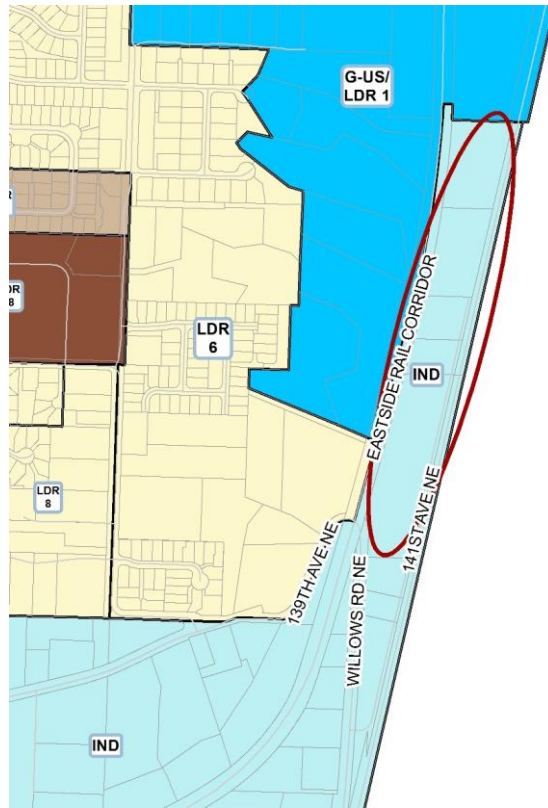
Parcel east of 132nd Avenue NE and north of NE 126th Place



Policy TL-36.4: Additional building height is appropriate in the eastern portion of the subarea, east of Willows Road, where development may occur at the base of the hillside.

Along the eastern edge of the subarea, a significant grade change from the residential area at the top of the hill to the light industry/office area at its base provides an opportunity to accommodate additional development in taller buildings without impacts to neighboring uses. Critical areas present on these properties provide a challenge to development, and the opportunity to provide space in taller structures may also help to minimize the need to disturb these features.

Eastern portion of subarea, east of Willows Road



Impacts to critical areas should be avoided. Where this is not practicable, impacts should be minimized. Mitigation plans may be proposed, based on a complete evaluation incorporating best available science, which result in an equal or greater level of function and value compared to the existing condition. Mitigation plans which provide a greater level of function and value are preferred.